

Some pieces have a timeless appeal, the combination of texture, design and fabric seeming to meld together perfectly. Enduring Elegance is one such quilt, featuring luscious colours, sensational embroidery designs and sensuous fabrics that combine to create a beauty that will withstand the test of time.

Colour is the essence of any design, so choose your fabric first, then match embroidery threads to the colours in the fabric to create a stunning visual synchronicity. The instructions for Enduring Elegance will be spread over two issues of Creative Expressions, the first half in this issue and the second half in Issue 5.



Enduring Elegance

Jenny and Simon Haskins

Finished size of quilt:
127cm (54in) square

Materials

- ❖ Pfaff 2140/44/24 large-hoop embroidery machine
- ❖ Design software and transfer device
- ❖ *Art Nouveau Series: Spring Flowers* embroidery design CD by Jenny Haskins Designs
- ❖ 1.5m x 115cm (1 1/2yd x 45 1/4in) old cream silk fabric, for blocks
- ❖ 2m x 115cm (2 1/2yd x 45 1/4in) floral fabric, for sashing and borders (this quantity may vary depending on pattern matching)
- ❖ 1.5m x 115cm (1 1/2yd x 45 1/4in) dark plain fabric, for narrow border and binding
- ❖ 4m x 91cm (4 1/2yd x 36in) Freudenberg H630 lightweight fusible batting
- ❖ 3m x 115cm (3 1/2yd x 45 1/4in) backing fabric
- ❖ Machine feet: 1/4in foot, open-toe foot, clear-view quilting foot and embroidery foot
- ❖ Machine needles: size-80 Microtex or your preferred embroidery and quilting needle
- ❖ Rayon-40 embroidery thread: for embroidery Robison-Anton: Burgundy 2249, Pro Cinnamon 2611, Cottage Beige 2593, Golden Tan 2570, DH Green 2411, Desert Cactus 2544, Salmon 2299 and Heather 2271
- ❖ Metallic thread: Robison-Anton Metallic 1003
- ❖ Construction thread to match fabrics
- ❖ Quilting thread: rayon-40 thread (R-A Seashell 2476) to match silk fabric for quilting blocks; monofilament thread in the needle for quilting floral fabric and bobbin thread to match backing fabric
- ❖ Fine pre-wound bobbins
- ❖ Rotary cutter, self-healing cutting mat and ruler
- ❖ Lorna's Decorative Touch Wand and small crystals
- ❖ Vellum tracing paper
- ❖ Self-adhesive tear-away stabiliser for embroidery
- ❖ 50cm (1/2yd) double-sided fusible web to back appliqué on centre block
- ❖ Sewing Revolution Quilting Rule
- ❖ Water-soluble fabric-marking pen
- ❖ Spray starch
- ❖ Helmar's Quilt Basting Spray
- ❖ Template plastic
- ❖ Hand-sewing needle and thread to match binding fabric
- ❖ General sewing requirements

For this quilt, the batting has been fused to the back of the blocks, the sashing and the border fabrics, and then it is pieced and quilted as a whole quilt.



Preparation

Note: The printing of design templates on vellum and the transfer of embroidery designs will be done on a need-to-use basis and given in the block instructions. Refer to page 78 of the Techniques section on the use of templates.

1 Use the rotary cutter, self-healing cutting mat and quilting ruler when cutting.

From the old cream silk and fusible batting, cut:

–nine, 38cm (15in) squares for the blocks; these are cut to 33cm (13in) squares when embroidered

From the floral fabric and fusible batting, cut:

–two, 7.5cm x 106.5cm (3in x 42in) long sashing strips

–six, 7.5cm x 33cm (3in x 13in) short sashing strips

–four, 15cm x 115cm (6in x 45in) wide border strips

–four, 15cm (6in) squares for border corners

From the dark plain fabric and fusible batting, cut:

–four, 4cm x 112cm (1 1/2in x 44in) narrow border strips

–four, 4cm (1 1/2in) squares for narrow border corners

From the dark plain fabric only, cut:

–7.5cm (3in) wide bias strips, joined on the bias to measure 571cm (225in)

2 Use a hot steam iron to fuse batting to the back of the fabric pieces. Place the sashing and border strips to one side with the binding strips.

3 Fuse double-sided fusible web to the back of the floral fabric for embroidered appliqué and broderie perse flowers for the centre block.

4 Iron each silk block, using several coats of spray starch and drying between coats.

5 Use the fabric-marking pen and quilting ruler to draw vertical, horizontal and diagonal lines that intersect through the centre on each silk block. Refer to page 78 of the Techniques section for more information on this technique.



Embroidering the Blocks

6 All embroidery uses the embroidery foot, self-adhesive tear-away stabiliser in the hoop, rayon-40 embroidery and metallic thread in the Microtex-80 needle and a fine pre-wound bobbin. Refer to page 77 of the Techniques section for more information on using self-adhesive tear-away stabiliser.

7 All designs are from the *Art Nouveau Series: Spring Flowers* embroidery design CD and are printed on vellum tracing paper. These are used as placement templates to ensure precise positioning when combining designs.

8 Use the Sewing Revolution Quilting Rule to mark embroidery positions when measuring from the centre of the block for circular designs.

9 Refer to the photo as a guide to thread colours and placement of embroidery designs. Refer to page 74 of the Techniques section for information on embroidered appliqué.

10 It is a good idea to iron fabric blocks after each embroidery design is finished, to help prevent the fabric puckering.



11 When embroidering the blocks always sew the designs that are opposite each other first (rather than in a clockwise or anticlockwise direction). This allows you to centre the other designs between those already embroidered, ensuring equal spacing.

12 Clip bobbin and jump threads and remove excess stabiliser from the back of the block once all the embroidery for that block is complete.

13 Remove fabric-marking lines with a light spray from a water-filled spray bottle once all embroidery is complete, allowing fabric to dry naturally. Press each block with a hot steam iron, stretching the block if necessary to remove any puckers.

Put the completed block to one side.

Note: All measurements are given for the blocks as we have embroidered them; yours may vary according to your first embroidery design placement. If so, adjust your subsequent embroideries on the block to compensate. As long as the block is visually pleasing and symmetrical it is still correct.

Block 1. Open Roses and Daisies

—Transfer embroidery designs anssf10a (for the centre of the block) and anssf01b (either side of the centre embroidery design) to the machine and embroider them on the block.

—Embroider anssf10a on the vertical and anssf01b centred on the





Block 1

horizontal on either side of anssf10a so it almost touches the centre design.

Block 2. Water Lilies

—Transfer embroidery designs anssf09a (centre of the block), anssf09c (centred on the vertical and horizontal lines) and anssf09d (centred on the diagonal lines) to the machine.

—On the old cream silk 38cm (15in) square, measure and mark 11.5cm (4 ½in) out from the centre on the vertical, horizontal and diagonal lines on each side of the centre. These points will be the centre position for the designs that encircle the centre design.

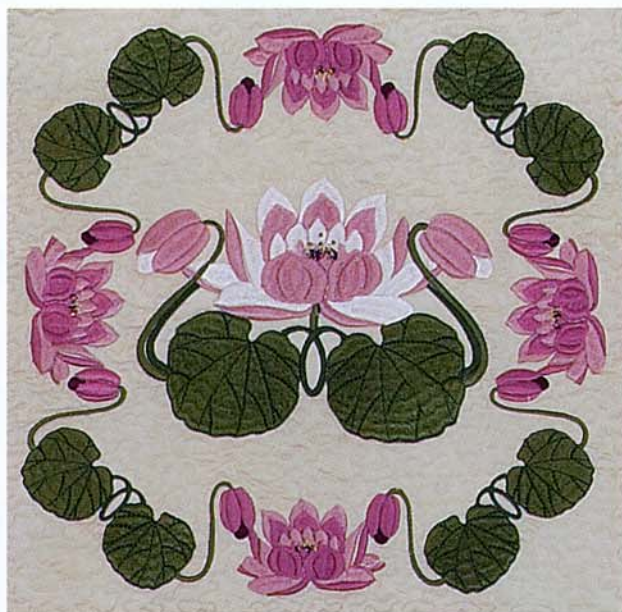
Note: All encircling designs face to the centre of the block.

—Embroider design anssf09a in the centre of the block (facing the top of the block), design anssf09c on either side of the centre on the vertical and horizontal lines, so it is facing to the centre, and design anssf09d on the diagonal lines in the corners, also facing to the centre.

Block 3. Roses

—Transfer embroidery designs anssf06a (centred over the horizontal lines) and anssf03b (centred over the vertical lines) to the machine.

—On the old cream silk 38cm (15in) square, measure and mark




Block 2

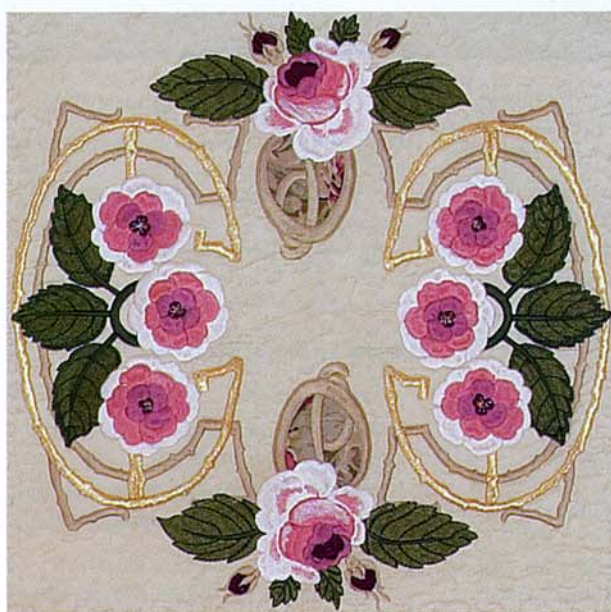
9cm (3 ½in) out from the centre on the vertical and horizontal lines on either side of the centre. These points will be the centre position for the above embroidery designs.

—Embroider design anssf06a centred over the horizontal line (so the design faces to the centre) on either side of the block.

—Embroider design anssf03b centred over the vertical line (so the designs face outwards and connect with design anssf06a.)

The techniques used here can be extended into a larger quilt by making extra blocks or incorporating a centre medallion. Each block can also stand alone as a pillow or cushion. The rest of the instructions for *Enduring Elegance* will be in *Creative Expressions* No 5 but this is enough for you to get your fabrics and get started.

For our US readers, this quilt is being taught in Pfaff dealer stores throughout North America, so go to the Pfaff USA web page: www.pfaffusa.com for your nearest Pfaff dealer or more information on these classes. 



Block 3





Block 4 Rose Garland

–Transfer embroidery designs anssf05b (centre), anssf03e (centred on the vertical and horizontal) and anssf03d (centred on the diagonal lines) to the machine.

–On the old cream silk 38cm (15in) square, measure and mark 11.5cm (4 ½in) out from the centre on the vertical, horizontal and diagonal lines. These points will be the centre position for the design that encircles the centre.

Note: All encircling designs face to the outside of the block.

–Embroider design anssf05b in the centre of the block; this design has built-in appliqué in the middle of it.

–Embroider design anssf03e on the vertical and horizontal lines.

–Embroider design anssf03d on the diagonal lines, centred between each anssf03e design to complete the circle.



Block 5 Camellias

–Transfer embroidery designs anssf12a (centred in the block), anssf12b (centred on either side of the centre, vertically) and anssf12d (centred on either side of the centre, horizontally) to the machine. Embroider the designs in the above sequence so they appear as one design. Design anssf12a has built-in appliqué in the centre.



Block 6 Chrysanthemums

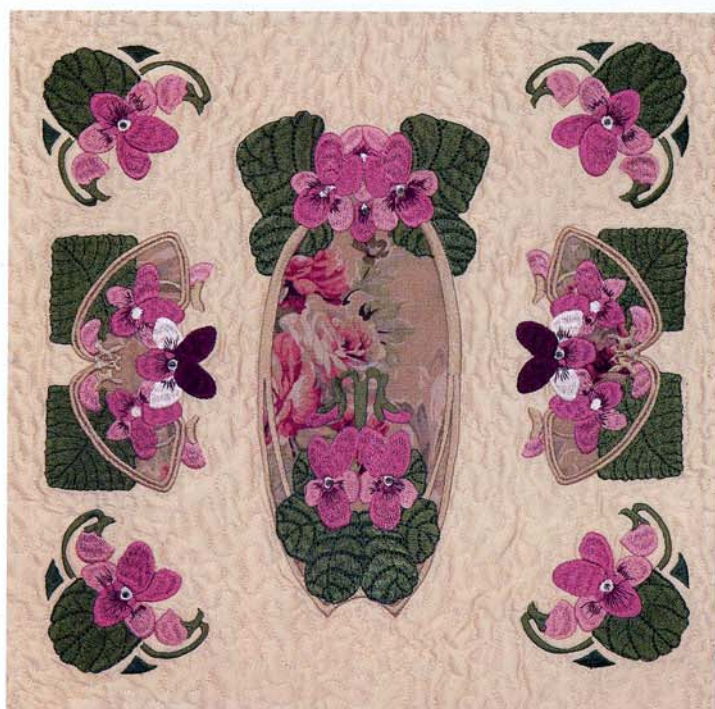
–Transfer embroidery designs anssf08b (centred vertically) and anssf08c (encircling design) to the machine.

–On the old cream silk 38cm (15in) square, use the Sewing Revolution to draw a circle with a diameter of 26.5cm (10 ½in) and mark every 45 degrees. These marks will be the centre position for each of the eight designs when completing the circular embroidery.

–Embroider design anssf08b centred vertically in the block – this design has built-in appliqué in the centre of it.

Note: All encircling designs face to the outside of the block.

–Embroider every second anssf12b design on the 45-degree mark then embroider the in-between anssf12b designs, centred between the already embroidered designs. This ensures even spacing of the designs in the circle.



Block 7 Violets

–Transfer embroidery designs anssf11a (centred on the vertical), anssf11b (either side of the centre on the horizontal) and anssf11c (centred in the corners on the diagonal) to the machine.

–On the old cream silk 38cm (15in) square, measure and mark 11.5cm (4 ½in) out on either side of the centre on the horizontal, and 16.5cm (6 ½in) on the diagonal lines. These are the centre positions for designs anssf11b and anssf11c respectively.

Note: The border designs face to the centre of the block.

–Embroider centre design anssf11a facing up and centred vertically on the block; this design has built-in appliqué in the centre.

–Embroider the horizontal designs anssf11b on either side of the centre.



–Embroider the diagonal corner designs anssf11c, making sure the outside edge of the designs align to form a straight line.



Block 8 Large Roses & Camellia

–Transfer embroidery designs anssf02b (diagonally left to right) and anssf07b (diagonally right to left) centred in the corners, to the machine.

–On the old cream silk 38in (15in) square, measure and mark 11cm (4 ¼in) out from the centre on the diagonal left to right line, and 9.5cm (3 ¾in) on the right to left line. These are the centre positions for designs anssf02b and anssf07b respectively.

–Embroider the two anssf02b designs in opposite diagonal left to right corners, facing the centre.

–Embroider anssf07b designs in opposite diagonal corners right to left so the designs just touch and are centred between the previously embroidered designs.



Block 9 Rose Topiary Trees

–Transfer embroidery designs anssf04a (centred on the vertical), anssf04d (pot), anssf04e (leaves) and anssf04c (roses) to the machine.

–On the old cream silk 38cm (15in) square, measure and mark 11cm (4 1/4in) out from and on each side of the centre on the horizontal. Use the quilting ruler and fabric pen to draw a line parallel to the centre vertical divide line, that passes through this point. Measure and mark 11cm (4 1/4in) down from the centre horizontal line on the two parallel lines. This will be the centre position for the two embroidered pots.

–Embroider design anssf04a in the centre of the block; this design has built-in appliqué in the centre.

–Cut out the pot embroidery design from the vellum template (anssf04d). Centre it over the 11cm (4 1/4in) marked position below the horizontal line and draw around it.

–Use the open-toe foot, stitch No 03 (zigzag), width 9mm, density 0.25, and gold brown thread to sew over the two parallel lines for a length of 19cm (7 1/2in). Make sure the stitching starts at least 6mm (1/4in) inside the pot.

–Embroider the pot (centred over and covering the bottom of the satin stitching), then the roses (centred over and covering the top of the satin stitching) and finally the two sets of leaves (equally spaced and centred over the satin stitching). Repeat for the other side of the block.



Putting it Together

14 Use template plastic to make a 33cm (13in) square. Mark vertical and horizontal lines that intersect through the centre of the square with a permanent marker. Use this 33cm (13in) square, and the rotary cutter, self-healing cutting mat and quilting ruler to square up all the blocks, maintaining the centre of each block.

15 Use the quilt photo and Layout Diagram 1 (found on the pattern sheet) as a guide to lay out your quilt.

Note: All quilt construction uses construction thread in the needle and bobbin, size-80 Microtex needle and the 1/4in foot (IDT engaged) or walking foot.

16 Join the following blocks together with the six, 7.5cm x 33cm (3in x 13in) short floral sashing strips, starting and finishing with a block:

Top row – blocks 1, 2 and 3

Middle row – blocks 4, 5 and 6

Bottom row – blocks 7, 8 and 9



17 Join the three block rows together with the two, 7.5cm x 106.5cm (3in x 42in) long floral sashing strips, starting and finishing with a row.

18 Join two, 4cm x 112cm (1 1/2in x 44in) narrow plain borders to the top and bottom of the blocks.

19 Join the four, 4cm (1 1/2in) plain squares; one to each end of the remaining two narrow border strips. Attach these to either side of the blocks.

20 Join two, 15cm x 115cm (6in x 45in) wide floral border strips to the top and bottom of the quilt.

21 Join the four, 15cm (6in) floral squares; one to each end of the remaining two wide floral border strips. Attach these to either side of the quilt.

22 Iron the double-sided fusible web to the back of the floral motifs you have used on Block 5, referring to the photo as a guide. Cut out the motifs then use a hot steam iron to fuse them in place on and around the block.

Quilting

23 Join the quilt backing fabric to suit the size of your quilt, making sure it is 2.5cm (1in) wider on all sides. Use the basting spray to attach the backing fabric to the underside of the quilt. Refer to page 79 of the Techniques section for more information on the use of basting spray.

Note: All quilting uses the clear-view quilting foot, size-80 Microtex needle with thread to match the blocks or monofilament thread for the floral fabric, and thread that matches the backing fabric in the bobbin.



24 Use rayon-40 thread that matches the silk in the blocks and freehand stipple quilt all blocks around the embroidery. Refer to page 75 of the Techniques section for more information on this technique. Continue quilting over the appliqué flowers inside Block 5 with rayon thread. Use monofilament for the flower that comes from the sashing into the block.

25 Use monofilament thread in the needle to quilt all the floral fabric sashing and borders.

26 When the quilting is complete, square up your quilt then use the plain 7.5cm (3in) bias strip to bind the quilt. Refer to page 79 of the Techniques section for more information on binding your quilt.

27 Sign and date your quilt.

28 You may now choose to use Lorna's Decorative Touch Wand to sparingly apply crystals to the flowers to represent dew, and to add that special sparkle to your quilt.

The techniques used in this piece can be extended into a larger quilt by making extra blocks or incorporating a centre medallion. Each block can also stand alone as a pillow or cushion.

For our North American readers, this quilt is being taught in Pfaff dealer stores throughout North America, so visit the Pfaff USA web page: www.pfaffusa.com for your nearest Pfaff dealer or more information on these classes. ☺