

Margaret Moorehead Presents....

Exquisite Christmas Quilt



This small quilt can be used as a lap quilt, a table topper, a wall hanging , or as a centerpiece on a bed...one quilt...so many options!

Supply List:

Extraordinary Ornaments Design Collection by Margaret Moorehead

Fusible batting:

Solid Fabric: 1 yard

Print Fabric: 2 1/2 yards

Backing Fabric: 45" square

Fusible Batting: 45" square

Embroidery Threads

Tear Away Stabilizer

Construction Threads

Machine in good working order

1/4" foot (recommended but optional)

General Sewing Supplies

Quick Point 2.0 Prairie Point Ruler

Starch

School Glue

Let's get Cutting!



Margaret Moorehead
Presents

FABRIC

- Center 18" square (will be cut to 14.5" square)
- Green Border A: Two 2.5" x 14.5" Two 2.5" x 18.5"
- Ivory Border B: Two 2.5" x 18.5" Two 2.5" x 22.5"
- Green Border C: Two 2.5" x 22.5" Two 2.5" x 26.5"
- Prairie Points D: Four 8 x width of fabric
- Ivory Border E: Two 3.5" x 26.5" Two 3.5" x 32.5"
- Green Border F: Two 6.0" x 32.5" Two 6.0" x 43.5"
- Backing Fabric and Batting 45" square
- Green Binding: 2.5" x 205"

Visit Us: www.margaretmoorehead.com
Contact Us: margaret@margaretmoorehead.com



Center Medallion

Embroidering the center design is as easy as marking hooping and stitching since the combined design has been supplied for you!

Single Center Design

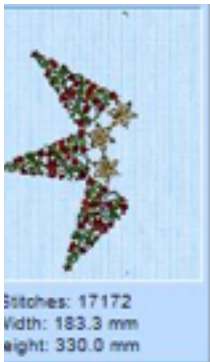


Use your design software to transfer the combined design to your sewing machine

Stitch the design out on your machine using tear away stabilizer, lightweight bobbin thread in the bobbin and decorative embroidery thread.

Remove excess stabilizer and cut your center block down to 14 1/2"

Two Part Center Design



If you are unable to use the single combined design you could use the 2 part design.

Close up of actual stitched out design



If you are working with a smaller hoop, use the photos on the left and templates to recreate the design so it can be stitched on your particular machine.

Use your creativity...your design does NOT need to be exactly like mine. Your options are limitless!)

REMEMBER: Your finished block will be cut to 14 1/2" so be sure the finished design is 13 1/2" or smaller

Prairie Points

Having the right tools makes life easier in all areas of our life. Using the Quick Points 2" ruler makes the prairie points a breeze!



Use your 8" wide strips of fabric and the quick point 2" ruler.

Cut a single layer of fabric at a time following the directions that come with the ruler, being sure to starch your fabric first.

Note: To get the best results use a natural fiber fabric (cotton works well)

Press in place as shown in the photo on the left



Glue is your friend.

Put a dot of school glue in the corner of each triangle section before folding the second time. (This will hold your prairie points in place and making your project easier and more enjoyable.

Press

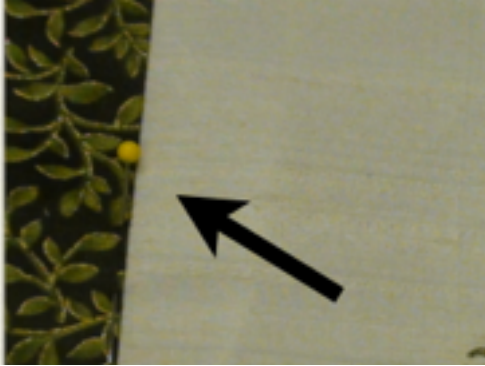


Fold your prairie points to form one long line, again using glue to make this process simple.

Note: There are several ways the prairie points can be lined up so be sure to choose your favorite look from the directions included with the ruler.

Putting it together

Design is stitched, prairie points are made, borders are cut to size, let's put it all together now!



All borders will be attached using a 1/4" seam allowance.

Decide on the top and bottom of your quilt block and mark it. Mine is marked with a pin in the green border section.

When attaching your borders be consistent in the way you attach them. Each set of borders has 2 longer borders and two shorter borders. For this project we will always be attaching the shorter borders to the top and bottom and the longer borders to the right and left



If you have not already done so, cut the center embroidered block down to a 14 1/2" square.

Find the exact center of each side of your square and mark it with a pin.

Find the exact center of one long side on each of your borders and mark it with a pin

Line up the raw edge of one of the "Green A" borders with the top edge of the center block making sure the centers are matched up exactly and the ends of the border line up exactly at the end of the center block

Use a 1/4" seam, and the 1/4" foot and stitch together.



Attach the other short border to the bottom edge of the center squarer using the same method

HINT: Press the seams of your project just as they was stitched (right sides of the border to the right sides of the center square). This "sets" the stitches and gives a more professional result.

Press the borders to the finished position and press the seams to one side.(I press the seams to the darker color, so in this case I pressed towards the green border.)

Margaret Moorehead's Exquisite Christmas Quilt continued:



Now attach the 2 longer borders of the “Green A” borders to the right and left sides of the center block, making sure the centers of the long border line up with the center of the embroidered square, and the cut edges of both are even.

Use a 1/4” seam and the 1/4” foot and to stitch the borders in place.

Press how it was stitched to set the stitches, then press the seams to the darker color fabric.



Now we will attach the “Ivory B” borders.

The shorter borders will be attached first to the top and bottom, making sure the cut edges and the centers line up, and using a 1/4” seam allowance, being sure to press after you stitch this.

The longer borders will be attached next to the right and left sides of your project making sure the edges and the centers line up, using a 1/4” seam allowance, and pressing after they are attached



“Green C” borders will go on next following the exact same method as the others.

Short borders on the top and bottom, longer borders on the right and left sides.

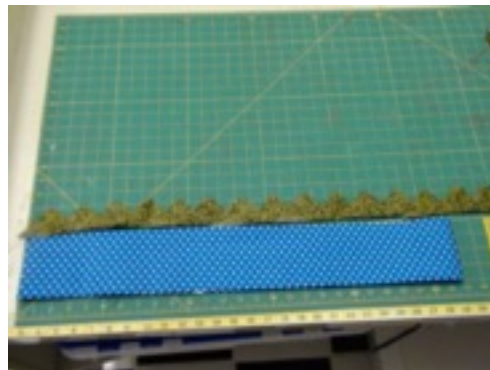
1/4” seam allowance will be used, and press each seam as you go.

Margaret Moorehead's Exquisite Christmas Quilt continued:

Attaching the Prairie Points....we are only BASTING them at this point to make sure we get the corners to look exactly how we want.

Note: The following photos use fabrics of different colors to make it easy to see the different components of your project.

The first picture is the actual quilt. In the second photo the blue polka dot represents the green border that would be attached to your quilt.



You will need 13 prairie points for each side of your quilt. The length of this row of 13 prairie points will be longer than each side of your square at this point.



To cut off the extra prairie points, simply unfold between the 13th and 14th prairie points and cut off as you see in the photo.

Margaret Moorehead's Exquisite Christmas Quilt continued:

Attaching the prairie points to the top and bottom of the project.

Center the prairie points on top of Green Border C so the prairie points are pointing “in”, the straight edge of the prairie points is lined up with the straight edge of border C. (The Center of the middle prairie point, prairie point 7, will be at the exact center of the border, and the two end prairie points will extend beyond the cut edge of the border.

Baste in place.

Press to the finished position (Prairie points extending away from Green Border C

Attaching the prairie points to the right and left sides of the project.

Repeat this process to attach the prairie points to the right and left sides of the project.

If you are not happy with the way your corners look, undo the basting and make adjustments until you are satisfied with your results.

(Note: If there are “raw edges” at the corners showing remember that “Ivory Border E” is going to be stitched in with these prairie points and that will cover those raw edges.)

Attaching Ivory Border E to the top and bottom of the project

To do this, remove about 2” of the the basting stitches from the corners where you just basted the prairie points so you can fold the prairie points back to the “stitching” position (the prairie points will be on top of the Green Border C and the straight edge of the prairie points will be in line with the straight edge of the border.

Place Ivory Border E on top of the prairie points (the prairie points are “sandwiched” between Green Border C and Ivory Border E. See photo next page)



When you go to the sewing machine you will be stitching through “Green Border C” the prairie points and “Ivory Border E”, using a 1/4” seam allowance and the 1/4” foot

Note in the photo to the left “Ivory Border E” has been folded to the left so you can better see all the layers you will be stitching through. When you are stitching yours “Ivory Border E” will be completely covering the prairie points.

Press the seam allowances away from the prairie points and towards the “Green C” Borders.



Notice how my corner seams look. They have been highlighted in orange to make them more visible.

Hint: baste the corners in place at this point also to make sure you like your results, then stitch with a regular length stitch.

Hint 2: Remember you must remove the basting from the corner areas so your prairie points can be positioned properly when stitching the “Ivory E” border in place.

Repeat for the other sides.

Final Border



Attach the shorter "Green F" borders to the top and bottom of your project using a 1/4" seam allowance and the 1/4" foot.



Attach the longer "Green F" borders to the right and left sides of your project using a 1/4" seam allowance and the 1/4" foot.

Quilting and Binding

Fuse the 45" square of fusible batting to the back of your quilt top.

Place the quilt top (fused with fusible batting) on top of the 45" square of backing fabric, batting to the wrong side of the backing fabric.

Quilt as desired and ENJOY!

