

Sheer Reverse Applique Napkin Pillow

*Margaret Moorehead's*

**VIRTUAL**  
**SEWING GUILD**

**Sheer Reverse Appliqué Napkin Pillow**

**Houston Quilt Festival 2022**



**Houston Quilt Festival 2022**

## Supply List:

- Cotton or good quality poly netting
- Nylon or poly organza
- Fabric to create pillow insert
- Square white napkins/hankies 8"
- Fiber Fill
- Lavender If Desired
- Rayon Embroidery Thread for the "lace drops" (Rayon is needed for use with the heat tool)
- Rayon or Poly Embroidery thread for the heart and flower embroidery and wing needle work
- Embroidery designs (included with this class)
- Tape to adhere fabric to the back of the hooped project
- Wing needle size 120
- Tapestry Needle for weaving ribbon around the edge

## Sewing Equipment List:

- Machine in good working order
- Iron
- Rotary Cutter, Ruler and Mat
- Good scissors to trim the appliqué fabric
- General Sewing Supplies
- Heat tool
- Machine feet: embroidery foot, open toe foot

## Stabilizers, batting and fabric prep products:

- DissolveAway Stabilizer
- Fiber Fill for pillow insert

**Virtual Sewing Guild  
Houston Quilt Festival  
2022**

## Sheer Reverse Applique Napkin Pillow

Fabric, Batting, Stabilizer, Ribbon	Quantity	Size	Notes
Cotton or good quality poly netting	1	5" square	If using cotton netting prewash, it shrinks quite a bit
Nylon or poly organza	1	Large enough to be hooped	You will be stitching out 4 lace drops
Fabric for pillow insert	2	Size to fit inside your napkin	This will be based on the size of your napkins
Napkins or fabric for the front and back of the pillow	1	Your choice	8" x 8" works well
Ribbon	1	3 yards x 1/8"	

### Preparation

1. Load the HeartAndFlowersCombined design and the lace drop design on your machine.
2. Mark the fabric or napkin you will be doing your embroidery on, with diagonal lines that go from corner to corner and intersect in the middle

### Lace Drops Embroidery

1. Hoop two layers of water soluble stabilizer and one layer of nylon or polyester organza
2. Put 4 of the LaceDrop embroidery designs in the hoop and stitch out
3. Rinse away the water soluble stabilizer
4. Use a heat tool and remove the excess organza

## Sheer Reverse Applique Napkin Pillow

### Heart Embroidery

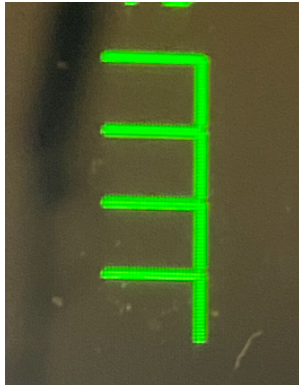
1. Hoop one layer of water soluble stabilizer
2. Place the hoop on the machine and then place the napkin over the stabilizer so the marked center of the fabric is centered in your hoop (the napkin will be “on point”)
3. Baste in place
4. Stitch out color #1, the appliqué outline
5. Remove the hoop from the machine, but not the project from the hoop and cut away the **white napkin fabric ONLY from inside the heart outline.** (Refer to image below, you will be cutting away the area where you see the “pink” in the heart)
6. Place the 5” squares of netting and the fabric over the heart outline on the **BACK** of the hoop. Make sure the netting is touching the stabilizer, the pink fabric is behind the netting and the wrong side of the pink fabric is facing out. Tape in place
7. Stitch color 2, the heart outline again
8. Stitch color 3, the deco stitches around the heart
9. Remove the hoop from the machine, but not the project from the hoop and cut away the excess pink fabric and netting
10. Attach the hoop to the machine Stitch out the rest of the design, changing colors as you go
11. Remove the hoop from the machine
12. Remove the basing stitches



## Sheer Reverse Applique Napkin Pillow

### Wing Needle Stitching

1. Use the Open-toe foot, a wing needle (size 120 if you have it) light weight bobbin thread and light weight thread in the needle (40 weight embroidery thread works great, however some people prefer 50 weight thread).
  2. **Note:** on most machines you will need to thread the needle manually, not with the needle threader since we are using a wing needle
  3. Choose a stitch similar to the one in the one below, that is designed for Wing Needle work and stitch around the outside the napkin. Settings: 3W x 3L
  4. Be sure to have stabilizer under your fabric at this point
  5. The straight edge of the stitch goes on the fabric of the napkin or hankie, and the “swing” of the stitch goes over into the lace edging.
- HINT: Test your stitch to make sure you like the way it will look.**
6. The needle down function and the raise presser foot functions are great options for this technique.
  7. Rinse away the water soluble stabilizer
  8. Iron to remove all the wrinkles





## Finishing it up!

1. **Creating the insert**
2. Measure the size of the inside of your pillow
3. Cut two pieces of insert fabric the size of the measurement of your pillow
4. Stitch the insert fabric, right sides together, using a 1/4" seam and leaving a 6" opening for turning and stuffing
5. Turn right sides out and stuff with fiber fill.
6. Stitch the opening closed either by machine or by hand
7. **Putting the project together:**
8. Pin the napkins together, that have the stabilizer washed out of them and have been ironed, wrong sides touching
9. Weave the 1/8" ribbon in the lace edge. To do this thread the ribbon in a large eye tapestry needle. Start at the bottom point of the napkin pillow and pull the ribbon through to the half way mark. Weave the ribbon in and out of the lace edging. When you get to the top of the pillow remove the ribbon from the needle. Thread the other end of the needle with the ribbon. Begin weaving the ribbon in and out of the lace edging, stopping to leave one entire side open
10. Place the pillow insert inside the napkins and weave the ribbon on the 4th side to completely close the pillow
11. **Lace Drops**
12. **Use thread in the bobbin and needle** that will match the stitched out lace drops
13. Place two of the Lace drops together, wrong sides touching, and stitch together with the open toe foot and a small zig zag, (or by using free motion) leaving an opening to insert the fiberfill and if desired, lavender
14. Insert the end of the ribbon in each lace drop
15. Be sure the ribbon is the length you want it to create a bow and have the lace drops at the end.
16. Position the lace drops as desired and secure to the pillow



**ENJOY!**

