

# MISSY'S MIDNIGHT

## MAGIC





# MISSY BILLINGSLEY

for Baby Lock



Missy designed this romantic black linen blouse – the yoke and sleeves feature black English cotton netting lace that was created on the Baby Lock Evolve Wave serger (overlocker), as does the matching petite clutch evening bag. Both have feature embroidery trims taken from *Jenny's Floral Appliqué Magic* design CD.



CE readers would like to welcome Missy, who is a very talented Education Consultant for Baby Lock USA, and is known for her gentle ways and giving spirit. As well as travelling around the USA sharing the sewing gospel according to Baby Lock, Missy is a regular guest artist on the USTV series *Martha's Sewing Room*, and a tutor at Martha's schools that are held each year in February and July, in Huntsville, Alabama. Missy is also a licensed Martha Pullen teacher. Jenny first met Missy many years ago at one of Martha's schools – Jenny was greatly impressed by her talent and expertise

back then, but only now has Missy finally agreed to sharing her wonderful ideas with CE readers. We are so glad you have Missy.

Missy lives with her husband in Florida, and enjoys giving seminars on serging (overlocking), sewing, embroidery and design software. She is a patient tutor, whose generous nature is embraced by all who attend her classes. She also enjoys beading, making jewellery and creating new projects on her much used Baby Lock sergers, machines and design software. And of course Missy loves the time she spends with her husband and friends.

Thank you Missy for these stunning projects and for sharing your talent with CE readers. Jenny in particular would like to thank you as she knows your busy schedule. You can email Missy at: [mrsbsews@yahoo.com](mailto:mrsbsews@yahoo.com) – tell her how much you enjoyed the projects, make her feel welcome and ask her any questions. To see her teaching schedule, visit the Baby Lock web page at: [www.babylock.com](http://www.babylock.com)





## MATERIALS

**NOTE: The materials listed below are for both the blouse and the clutch purse.**

- Baby Lock *Evolve* Wave serger (overlocker), New *Espire* sewing machine and *BMP6* Embroidery Professional (six-needle embroidery machine) and hoop
- Design software and transfer device
- *Floral Appliqué Magic* embroidery design CD by Jenny Haskins
- Blouse pattern (shell) from *Six Easy Patterns for Women* by Martha Pullen ([www.marthapullen.com](http://www.marthapullen.com))
- *Caprice* purse pattern from *Beautiful Beaded Embroidery* (available from [www.karimeaway.com](http://www.karimeaway.com))
- 91cm x 114cm (1yd x 45in) black cotton net tulle from Martha Pullen Co
- 1.4m x 114cm (1½yd x 45in) black handkerchief linen from Martha Pullen Co
- 22cm (¾yd) appliqué fabric for flowers in the colour of your choice
- 45cm (½yd) appliqué fabric for leaves in the colour of your choice
- 45cm (½yd) black silk dupioni for appliqué backing on sleeves
- 45cm (½yd) silver black silk dupioni for blouse lining
- Lite *Steam a Seam 2* fusible web for appliqué
- Serger (overlocker) foot: standard presser foot
- Machine feet: open-toe appliqué foot, construction foot and blind-hem foot
- Machine needles: *ELX 705* size 80 needle for serger (overlocker), 80 Universal needle for sewing machine, and 75/11 embroidery needles for embroidery machine
- Threads: embroidery threads in the colours of your choice to match your chosen fabric
- Bobbinfil for bobbin
- Black construction thread for needle and bobbins
- Four cones of black serger (overlocker) thread to construct blouse
- Two spools of black Sulky 12 wt or YLI Jeans Stitch thread for tulle lace
- Small black button
- *Dissolve Magic* woven soluble stabiliser for hoop embroidery ([www.rnkdistributing.com](http://www.rnkdistributing.com))
- White chalk pencil or piece for chalk for marking fabric
- Quilting ruler
- Kai cutting shears
- Small sharp scissors for appliqué
- Fray Block
- Heavy-duty spray starch
- Hand-sewing needle
- Glass-headed lace pins
- Appliqué mat
- Tracing paper and lead pencil
- Heat activated crystals and heating wand
- General sewing requirements

## PREPARATION Blouse

1 Using the design software, transfer device and *Floral Appliqué Magic* design CD, transfer designs **fm18s50** (flower), **fm10s50** (leaves 2) and **fm98s50** (leaf 1) to the *BMP6* Embroidery Professional six-needle embroidery machine. You will need five flowers for each sleeve (10 in total), four single leaves and two double leaves.

**JENNY'S TIP:** It is a good idea to use your design software to combine as many flowers and leaves as possible in the space of one hoop, and to colour-sort your designs (for speed) when you are using this technique.

2 Wash the black cotton net tulle as it shrinks considerably when it is washed. When it is dry, iron the netting (true to grain) with several coats of heavy-duty spray starch.

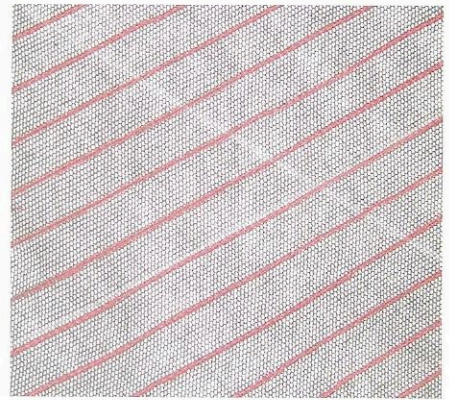
3 As the pattern doesn't have a separate front yoke, you will have to decide how deep you want your yoke to be from the front pattern piece of the blouse (around 15–20cm (6–8in) deep). Use tracing paper and a pencil to trace the yoke from the front pattern piece, allowing for a seam allowance at the bottom edge. Also make a pattern piece for the bottom half of the blouse front, adjusting the length to suit your needs. (Missy is only tiny so she reduced the length by 10cm (4in).) Again, allow a seam allowance on the yoke edge of the front of the blouse.

4 Lay the pattern pieces for the sleeves and front yoke over the black cotton net tulle and draw around them using the chalk pencil, leaving at least 2.5cm (1in) extra fabric on all sides.

5 Use the Kai cutting shears to roughly cut out each pattern piece on the black net tulle (cut the yoke out as a rectangle as this makes it easier to work with). Also cut out the blouse back, front and the bias binding strip for the neck edge from the black handkerchief linen. You may choose to extend the length of the blouse – Missy added 10cm (4in) to the length of hers.

6 Use the chalk pencil and quilting ruler to mark an 'X' with the lines extending from the top to the bottom and centred in each

sleeve and the yoke. The 'v' part of the 'X' should be a 60-degree angle.



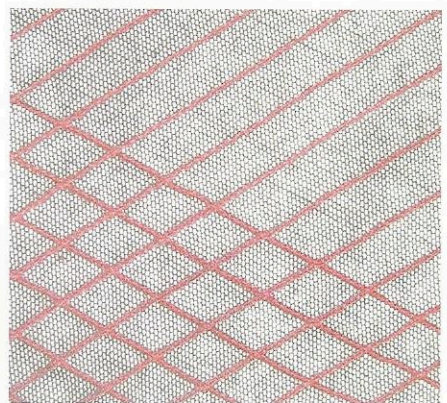
## NET SERGER LACE

7 Thread the Baby Lock *Evolve* Wave serger (overlocker) – use the standard presser foot, black thread in the C3 needle position (*ELX 705* size 80 needle) and the thicker black Sulky or YLI thread in the chain looper.

8 Attach the flat-bed sewing table, then lock the cutting blade down and the upper looper down. Now you can serge as though you were using a sewing machine. The top of the fabric has a straight stitch; the underneath stitch is a chain made with heavier thread.

9 Start sewing over one of the marked 'X' lines on the yoke fabric – the needle should be centred over the marked line. Sew all the lines that go in one direction using the outside edge of the standard presser foot as a guide, lining it up with the previous row of stitching.

10 Flip the fabric around and repeat Step 9 for the lines going in the opposite direction, creating a 13mm (½in) diagonal chain-stitched grid.







**11** The 'chain' looper side of the stitching is usually the wrong side of the lace, although this is up to you. Should you prefer more texture, you can make it the right side of the fabric, but bear in mind that it can snag easily this way.

**12** Repeat steps 8 to 10 for the two tulle fabric pieces marked with the sleeves.

**13** Press the yoke and sleeve serger lace pieces, then replace the pattern pieces over the serger lace fabric (turn up the hem allowance on the sleeve pattern pieces as there is no hem) and cut out the pattern pieces.

## EMBROIDERY

**NOTE:** Your Baby Lock *BMP6* Embroidery Professional can be sewing away happily while you are creating your serger lace.

**14** Use the 75/11 embroidery needles, the appliqué fabric, the matching threads of your choice, a bobbin with fine black thread and *Dissolve Magic* stabiliser in the hoop to embroider the flowers and leaves.

**15** Embroider 10 flowers, four single leaves and two double leaves. The designs are stitched straight onto the appliqué fabric, so colours 1 to 3 in each design can be skipped.

**16** When all the embroidery is complete, wash out the stabiliser completely using warm water. Swish it regularly and rinse it several times to make sure all the stabiliser is removed. Lie your embroidery flat to dry, and then press it over a towel from the wrong side.

**17** Use the Fray Block sparingly around the outside edge of the stitching, allowing it to dry, then iron (over an appliqué mat) the Lite *Steam a Seam 2* to the back of the embroidered appliqué flowers and leaves.

**18** Use small sharp scissors to carefully cut out the flowers and leaves close to the edge of the stitching, then remove the paper backing from the web.

**19** Use the photo of the sleeve edge as a guide and arrange the flowers around the right side of the fabric on the hem edge of each sleeve. Start in the centre of the sleeve and work from side to side, arranging the flowers and leaves as you go. The flowers should be centred over the cut fabric edge of the sleeves, extending equally over the edge of the sleeve on one side and over the serger lace on the other side.

**20** The centre flower should sit over the flowers on each side of it. When you are happy with your design, pin it in place using glass-headed lace pins, then iron the appliqué flowers and leaves to the edge of each sleeve over an appliqué mat (this way the fusible web on the parts of the flowers that extend over the serger lace will not stick to the ironing board).

**21** Place a strip of black silk dupioni over the back of the appliqués on the edge of the sleeves and iron it in place. Some of the silk will adhere to the back of the over-edge appliqué. The black silk will have to be pinned to those sections of the appliqué that are over the serger lace.

**22** Use the New *Espire* sewing machine to attach the appliqué to the edge of the sleeve and the black silk appliqué lining fabric. To do this, use the open-toe appliqué foot, black thread in the bobbin, thread that matches the appliqué in the 80 Universal needle and a narrow zigzag stitch.

**23** Starting at the right side of the embroidered appliqué, sew around the edges of all the appliqué pieces. The needle should not swing off the embroidered appliqué, but rather just cover the edge stitching.

**24** Use Fray Block around the outside edge of all the zigzag stitching from the lining side of the sleeve edge, then use small sharp scissors to carefully cut the lining fabric from the outside edge of each appliqué piece. This gives a nice neat finish to the edge of the sleeves.

## CONSTRUCTION

**NOTE:** The entire blouse is constructed on the *Evolve Wave* serger (overlocker) using a four-thread overlock with a stitch length of 2.5.

**25** Use the four cones of black serger (overlocker) thread in the two *ELX 705* size 80 needles and two loopers of the *Evolve* serger (overlocker), as well as the standard presser foot.

**26** Follow the pattern directions to construct the blouse. Remember on the underarm sleeve seams to stop at the appliqué flower edge – do not serge over this as it will be machine-seamed before the excess appliqué is hand-sewn down flat.

**27** Use the construction foot and black construction thread in the needle and bobbin to sew the underarm seam of the appliqué edge of each seam.

**28** Use a hand-sewing needle to sew the neck edge bias to the inside of the neck edge, the button and loop to the back of the blouse, and the edges of the appliqué flat over the underarm seam.

**29** Use the heating wand to add your beautiful heat-activated crystals to the centre of the flowers on the sleeves to complete this stunning blouse.

You have now learned two wonderful new techniques and have a stunning blouse, aptly named *Missy's Midnight Magic* serger lace blouse. No wonder Missy is a favourite at Martha's schools, on TV and among the numerous Baby Lock dealerships around the US.

The same serger (overlocker) lace technique and appliqué flowers are used for the *Midnight Magic* clutch purse. Use the *Caprice* purse pattern (available from [www.karimeaway.com](http://www.karimeaway.com)), the black English cotton netting for the lace and the silver black silk dupioni for the purse lining.

