

# GILDED MEMORIES PHOTO FRAME

Laura Haynie



Laura who is one of the CE family and a talented valued regular contributor has chosen to share her *Gilded Memories* embroidered frame with us. The photo in this beautiful frame is of Laura's talented daughter Jessica, who dances with New York dance companies and teaches ballet. This project is very timely for the festive season as it is a personal quick gift, perfect for that Christmas stocking.



## MATERIALS

- ◆ Embroidery/sewing machine with foot, hoop and embroidery attachments
- ◆ Design software and transfer device
- ◆ Jenny's *Gilded Memories* design CD design **gm13** (frame) **gm32** (leaves)
- ◆ Two, 28cm x 38cm (11in x 15in) piece of gold nylon organza
- ◆ *Cut-away Magic* stabiliser for embroidery
- ◆ Jenny's metallic gold thread G3 for the needle and bobbin
- ◆ Metallic needle size 80
- ◆ Clear craft glue
- ◆ 9cm x 13cm (3<sup>1</sup>/<sub>3</sub>in x 5in) acrylic self-standing photo frame
- ◆ Sticky backed foam to back embroidered frame
- ◆ Fray stop
- ◆ Chalk pencil
- ◆ 30cm (12in) ruler
- ◆ Small sharp scissors/stencil iron
- ◆ Dressmaking shears
- ◆ Tracing paper and lead pencil
- ◆ Sticky tape
- ◆ General sewing requirements

## PREPARATION

**1** Use the design software to transfer designs **gm13** and **gm32** from the *Gilded Memories* design CD. Use the resizing option in the software to resize the frame design **gm13** to 3<sup>1</sup>/<sub>5</sub>in x 5in using the 'grab and drag' option. (There is no need to adjust the stitch count or density when doing this.) Save this new design as **gm13a**. Also use the software to 'cut and paste' the

single leaf at the bottom of design **gm32** and save this design as **gm32a**. Transfer both these designs to the machine.

## EMBROIDERY

**2** Hoop one layer each of the *Cut-away Magic* and the gold nylon organza and then embroider design **gm13a** using the metallic size 80 needle, Jenny's gold metallic thread G3 in the needle and bobbin to embroider the design.

**3** Also embroider two leaf designs **gm32a** using the same products.

**4** Use the small sharp scissors or the stencil iron to cut/burn the *Cut-away Magic* and the organza from the edge of the embroidery designs close to and aligned with the edge of the stitching.

## PUTTING IT TOGETHER

**5** Use the tracing paper and lead pencil to trace around the embroidery frame to get your pattern, then carefully cut it out.

**6** Use the chalk pencil to trace around the edge of the frame pattern on the black sticky-backed foam and then use small sharp scissors to carefully cut out the frame inside the marked outline (so it is slightly smaller than the embroidered frame). Also cut out the oval in the centre of the frame.

**7** Peel off the protective coating at the back of the cut-out frame and stick it accurately over the back of the embroidered frame so the black foam does not show from the front of the gold frame.

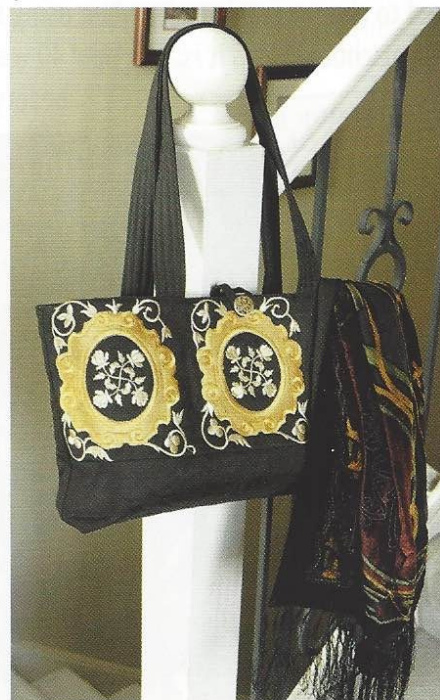
**8** Place the embroidered frame centred over the front of the acrylic frame so that it covers the acrylic frame. Use the chalk pencil to draw around the inside oval of the embroidered frame on the acrylic frame.

**9** Place your photo in the acrylic frame centred in the marked oval and then use sticky tape to hold it in place.

**10** Match the marked oval on the acrylic frame with that of the embroidered frame and then use the craft glue to glue the embroidered frame to the acrylic frame.

**11** Use the photo as a guide to glue an embroidered leaf on each side of the bottom of the frame.

*What an easy project this is and yet what a very personal and beautiful gift it makes. Remember you can embroider this frame to match your room and furnishing colours. Thank you Laura, you're such a treasure to our industry. You can see Laura at all major shows across the USA on the Jenny Haskins' Products stand.*



*You may also choose to embroider design **gm11** with **gm35** embroidered in the centre of it, on a black tote bag as Lizzy Allen has. This is great idea also Lizzy, thank you.*