

# Mylar Christmas Ornaments

## Project Instructions

Instructions to make a 2-sided mylar ornament, mylar gift tag and a mylar tied napkin ring.



Designed by Patricia Gates  
**Purely Gates Embroidery Patterns**



# Mylar Christmas Ornaments

## Project Instructions

Designed by Patricia Gates

### Skill Level: Beginner

Supplies needed to make one:

#### 2 Sided Ornament:

- Medium Weight Cutaway Stabilizer - 10 "square
- Stitch N Shape by Floriani - 5x5 inch square. (You can substitute Timtex® or 2 layers of Peltex®70 by Pellon 2-5x5 squares and stack them.
- Hoop Collar
- 2 - 5 inch squares of Mylar
- 4x4 Hoop
- Color Change Chart for design
- Selected Colors of Embroidery Threads
- Bobbins filled with same Threads and colors chosen above
- Size 75/11 embroidery needle
- Chosen design loaded on embroidery machine
- Small sharp scissors
- Single hole punch
- 1/4 inch wide ribbon-10" piece to hang ornament

#### Gift Tag:

- Medium Weight Cutaway Stabilizer - (2) 10 " squares and (1) 6" square
- Stitch N Shape by Floriani - 5x5 inch square. (You can substitute Timtex® or 2 layers of Peltex®70 by Pellon 2-5x5 squares and stack them.
- Hoop Collar
- 1 - 5 inch square of Mylar
- 4x4 Hoop
- Color Change Chart for design
- Selected Colors of Embroidery Threads
- Bobbin filled with bobbin fill thread and 3 empty bobbins
- Size 75/11 embroidery needle
- Chosen design loaded on embroidery machine
- Small sharp scissors
- Single hole punch
- 1/4 inch wide ribbon-10" piece to hang ornament

#### Tied Napkin Ring:

- Medium Weight Cutaway Stabilizer - (1)10 " square
- Stitch N Shape by Floriani - 5x5 inch square. (You can substitute Timtex® or 2 layers of Peltex®70 by Pellon 2-5x5 squares and stack them.
- Hoop Collar
- 1 - 5 inch square of Mylar
- 4x4 Hoop
- Color Change Chart for design
- Selected Colors of Embroidery Threads
- Bobbin filled with bobbin fill thread
- Size 75/11 embroidery needle
- Chosen design loaded on embroidery machine
- Small sharp scissors
- Single hole punch
- 1/4 inch wide ribbon-16" piece for tie
- 2 small pieces of tape



[purelygates.com](http://purelygates.com)

1-877-827-5997

[patricia@purelygates.com](mailto:patricia@purelygates.com)

The embroidery design collection shown in this sample is not included in this pattern. The collection Mylar Christmas Ornaments can be purchased as a digital download at [purelygates.com](http://purelygates.com).

© Patricia Gates 2016. All rights reserved. Written permission is required to copy and/or distribute copies of this pattern, whether or not you profit from it.



# Mylar Christmas Ornaments

## Project Instructions

The color change chart included with the collection Mylar Christmas Ornaments tells you when to lay down the Mylar and when to tear it away. You will see a **green** dot and a **red** dot on a color change number. The **green** dot means to lay the Mylar over the design **AFTER** that color has stitched. The **red** dot means to tear away the excess mylar **AFTER** that color has stitched.

**PLEASE** read through the instructions completely before beginning any of these projects. Each project gives information and pictures that may be applicable to all 3 projects.



## 2 Sided Ornament Project

NOTE: If you are familiar with Purely Gates Embroidery Mylar Embroidery® designs, you will notice the following 3 steps will be unique to this project since this will be a 2 sided Mylar Ornament:

Changing the bobbin to match the upper thread for each color change.



Clipping the threads on the back of the project after each color change to keep the back clean



Placing mylar under the hoop



(These are tasks you will **not** normally have to do when stitching a Mylar Embroidery® design.)

1. Look at the color change chart for the design you have chosen and select the thread colors you will use.
2. So that the back of your ornament will match the front, fill a corresponding bobbin for each thread you chose in Step one. Put the bobbin in the machine that corresponds to color number one on the color change chart.
3. The designs in the collection Mylar Christmas Ornaments fit in a 4x4 hoop (100mm x 100mm hoop) so choose the corresponding hoop for your machine. Hoop the 10 "x 10" piece of Cutaway Stabilizer along with a hoop collar. A hoop collar is a piece of felt or batting, that is cut to the same size as your stabilizer. It has the center cut out and is placed on top of your fabric before you hoop it (or on top of your stabilizer, if you are only hooping stabilizer as in this project). Attach the hoop on the arm of the embroidery machine.

To learn how to make a hoop collar. Watch my video on hooping to find out.  
Click here: <https://www.youtube.com/watch?v=Ik2gXL3QXPw>



hoop collar hooped  
with fabric



hoop collar hooped with  
stabilizer only

4. Lay the 5"x5" square of Stitch N Shape, (or Timtex®, or 2 5x5" squares stacked of Peltex®70) centered under the needle.



5. Start stitching your design, following along the color chart for that design.

At each color change, **do not forget** to:

- A. Change the bobbin to the color that will be used as the top thread color.
- B. Trim the long tie-off threads on the back between color changes to keep the back looking as nice as the front.

A.

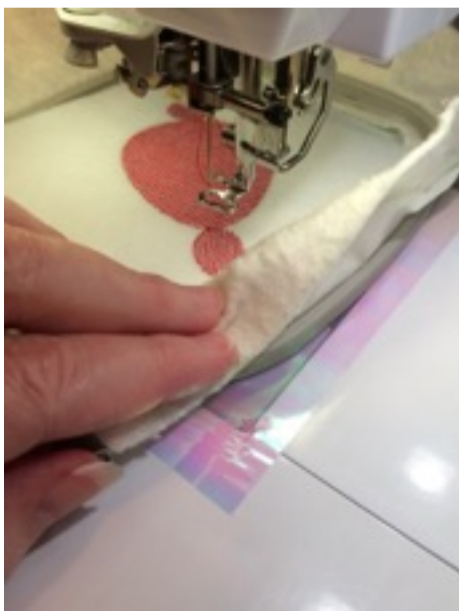


B.

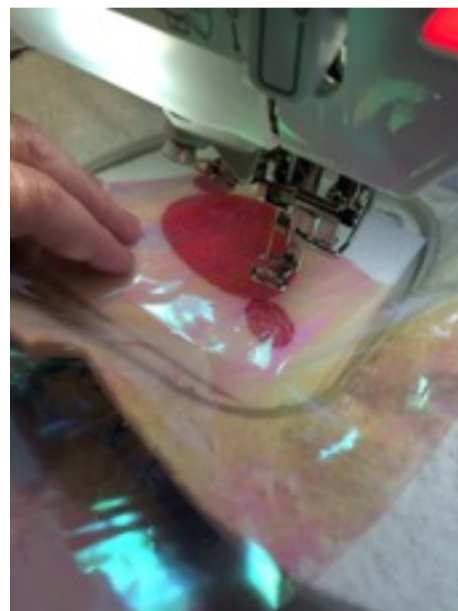


6. Continue stitching the color changes until you reach the **green dot** on the color chart. Stitch the color change with the **green dot**. Once that color change is finished stitching:
- Remove the hoop from the machine
  - Trim the long tie-off threads on the back of the design.
  - Change the bobbin in the machine
  - Return the hoop to the machine
  - Slide a 5" x 5" piece of mylar under the hoop (C)
  - Place a 5" x 5" piece of mylar on top of the hoop (D)
  - Stitch the next color change

C.



D.



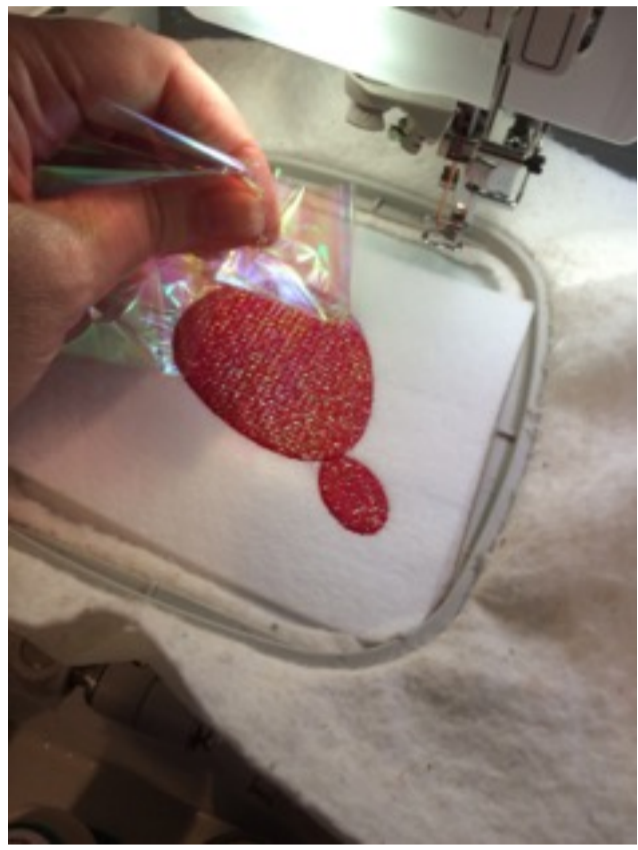


7. Continue stitching the color changes until you reach the **red dot** on the color chart. Stitch the color change with the **red dot**. Once that color change is finished stitching:
- Remove the hoop from the machine
  - Trim the long tie-off threads on the back of the design.
  - Remove the excess mylar from the back of the design (E)
  - Change the bobbin in the machine
  - Remove the excess mylar from the top of the design (F)
  - Return the hoop to the machine
  - Stitch the next color change until the whole design is complete.

E.



F.



8. Remove the hoop from the machine and remove everything from the hoop. Trim around the design using small, sharp scissors. Use a single hole punch tool to create the hole at the top of the ornament.



9. Thread the 10" length of ribbon through the hole at the top and knot the ends together.





# Mylar Gift Tag Project Instructions

This gift tag project can include a bonus lettering design called GIFT TAG and says A GIFT FOR YOU with a TO and FROM line. It works with any of the circle shape ornament designs (mco01 through mco05, mco14, mco15, mco17 through mco19)

**OR** - you can use any of the ornament shapes in the collection and leave the back blank for a hand written message.



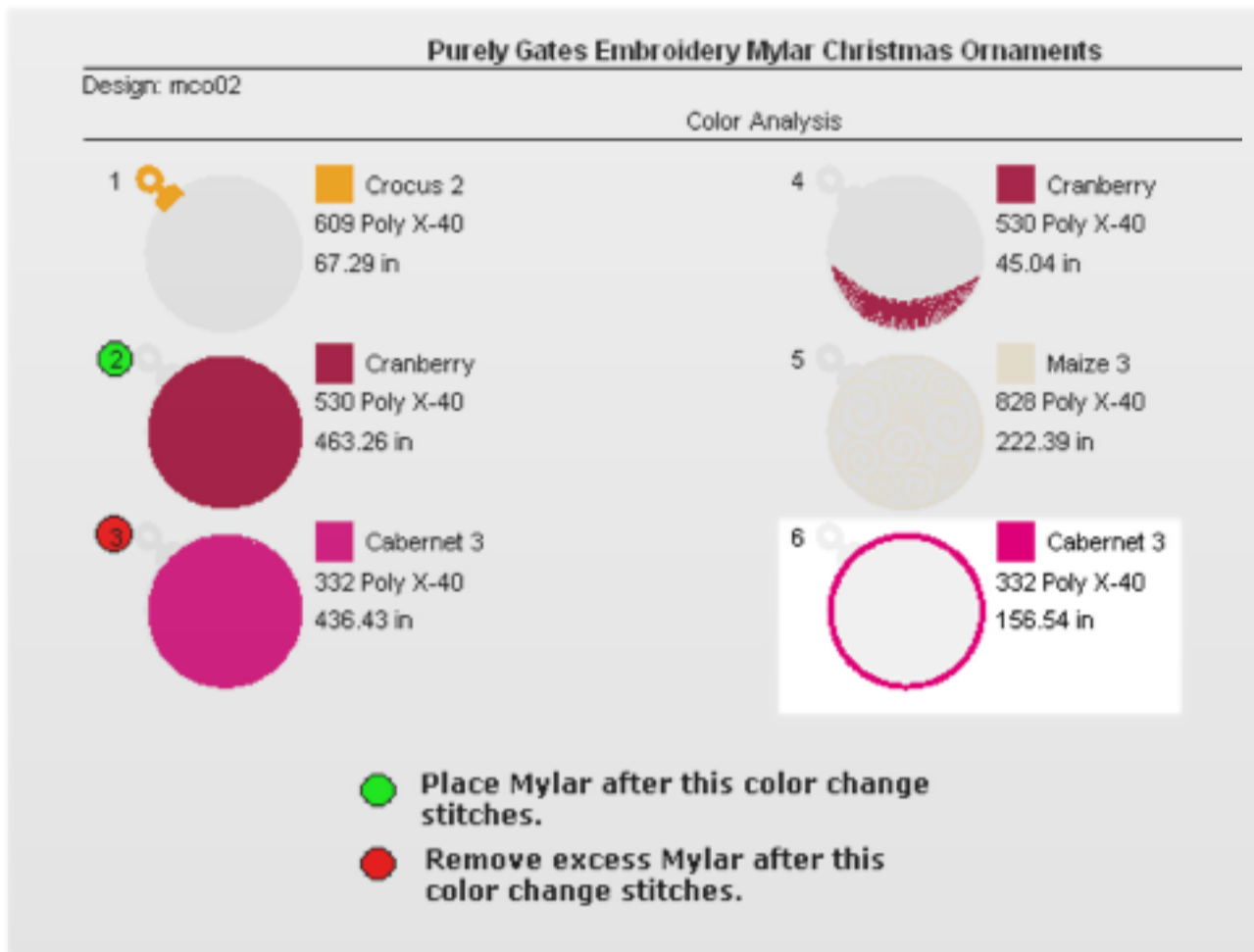
Here are the instructions if you are using the GIFT TAG design along with a circle shape ornament design:

(For a hand written message instead of the GIFT TAG design, skip steps 1, 2 and 9,10).

1. The designs in the collection Mylar Christmas Ornaments fit in a 4x4 hoop (100mm x 100mm hoop) so choose the corresponding hoop for your machine. Hoop (1) - 10" x 10" piece of Cutaway Stabilizer along with a hoop collar. After you put the hoop on the machine, slide the 6" x 6" piece of stabilizer under the hoop. Two layers of cutaway stabilizer is used because, later in the instructions, this design will be placed on the back of an ornament design. Two layers of stabilizer will prevent any "show through" once this design is put on the back of the ornament design.
2. Stitch the design labelled GIFT TAG. You can stitch this in whatever color you choose. I used black. This design has small narrow lettering so I recommend matching the bobbin thread to the top thread when stitching this design. Therefore, I put a bobbin filled with black thread in the machine. When stitching is complete, remove the design from the hoop and set aside. Remove the black bobbin from the machine.
3. Now open an ornament design in your embroidery machine. If you are using the GIFT TAG design for the back, you will need to choose one of the designs listed above.
4. Portions of the back of the ornament design will be visible once it is completed. Therefore, you will need to **put a matching thread in the bobbin** for color #1. Color #1 stitches the hanger at the top of the ornament. After this color stitches, you can replace the bobbin with regular bobbin thread.
5. Hoop a piece of 10" x 10" cutaway stabilizer with a hoop collar and attach the hoop on the machine.
6. Lay the 5x5 square of Stitch N Shape, (or Timtex®, or 2 5x5" squares stacked of Peltex®70) centered under the needle.



7. Continue to stitch the design consulting the color change chart to know when to lay down the mylar on top of the design and when to remove the excess mylar.
- NOTE: If you have chosen one of the designs that is compatible with the GIFT TAG design, the last color change stitches the **satin stitch outline** portion of the design. You will need to replace the bobbin thread with a color that matches the top thread right before it stitches. The back of the satin stitch outline will be seen in the finished project. See the example below.



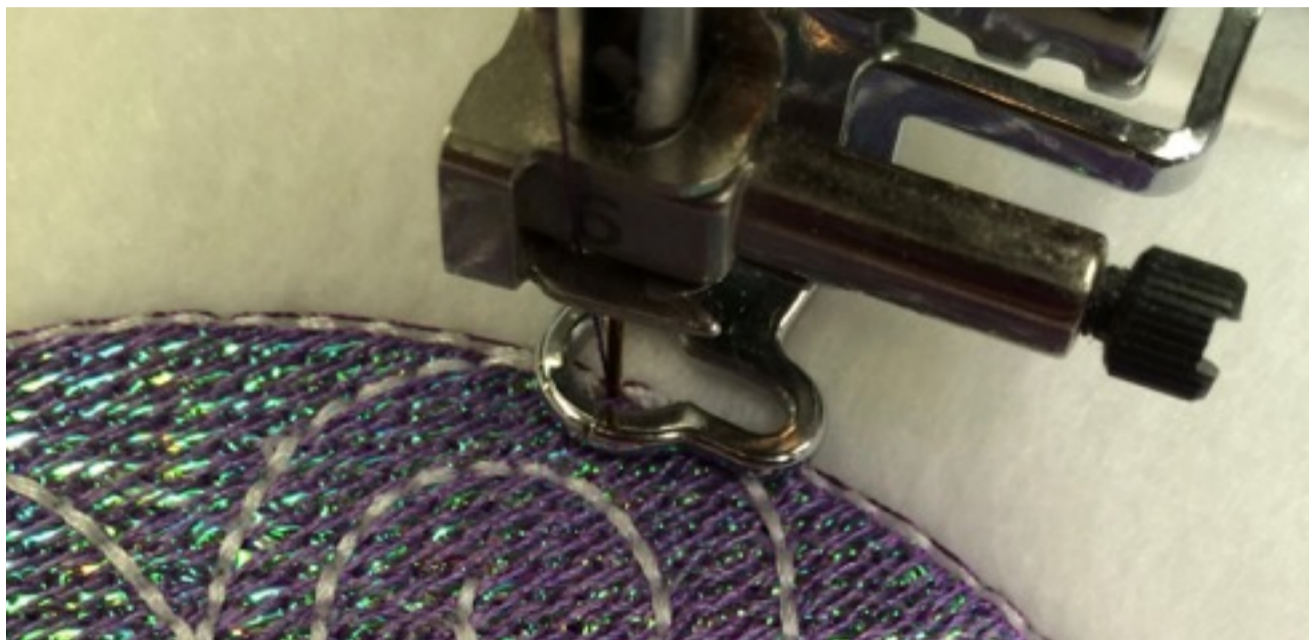
← Satin Stitch Outline  
Insert GIFT TAG design  
before this stitches and  
replace bobbin to match  
upper thread.

•Hold the hoop up to the light and align the GIFT TAG design (that you stitched in Step 2) to the back of the ornament design that is in the hoop.



•OR - if you want to attach a “blank” area for a handwritten message instead of the GIFT TAG design, you will need to replace the bobbin thread with a color that matches the top thread right before it stitches the outline satin stitches. Look at the color chart to determine which color change stitches the satin outline stitch. Now slide 2 layers of cutaway stabilizer underneath the hoop and stitch the satin outline. Continue through the color changes until the design is complete. Skip Steps 8 through 10.

8. Put the hoop back on the machine and begin to stitch the satin stitch outline. If using GIFT TAG design in your project, READ STEP 9 before stitching the satin outline.
9. The embroidery machine will stitch a running stitch around the circle shape before it begins the satin stitch.
  - Watch the embroidery machine start to stitch the satin stitch start to stitch. It begins with a running stitch that goes all the way around the shape.
  - When the running stitch has made one complete circle, stop the machine.
  - Cut the thread.



purple running stitch of satin outline has stitched once completely around the shape.

- Remove the hoop from the machine and turn it over to compare this running stitch to the running stitch made in the GIFT TAG design. You want it to be right on the stitches or close.



Purple running stitch is close to being aligned with the black running stitch.

**If it is correct or close:** I like to remove the running stitch circle of stitches that was created in the GIFT TAG design in Step 2 (mine would be in the black thread that I used). I do this just in case the stitches may fall a bit outside the satin stitches.

**If it is off and you want to correct it:** Remove the running stitches circle of satin stitches that just stitched in Step 9, and re-align the two designs. Put the hoop back on the machine and restart the color change. Watch the running stitch portion again, stop the machine, and again, check the alignment. If it is correct, then remove the circle of stitches created on the GIFT TAG design. If still off, repeat this step.



remove Gift Tag design running stitch



10. Once you are happy with the alignment, return the hoop to the embroidery machine and press start to complete the satin stitch outline.

11. Your design is now complete. Remove everything from the hoop and trim closely around the design. Trim away the excess cutaway stabilizer the covers the backside of the hole at the top of the ornament.



12. Trim away the excess cutaway stabilizer the covers the backside of the hole at the top of the ornament.



13. Punch a hole in the top and thread the 10" length of ribbon through and knot it.





Here's another idea: Some of the ornament embroidery designs, like the one in this picture, do not necessarily have to be just for Christmas. You can make these for any gift throughout the year. You can skip the color change that has the circle hanger (usually the first color change). When it is time to lay the mylar of your design, you can remove the hoop from the machine and tape a piece of folded ribbon to the back of the design as in the picture below. Put the hoop back on the machine and continue through the design. Be careful not to cut the ribbon when you are trimming around the design.

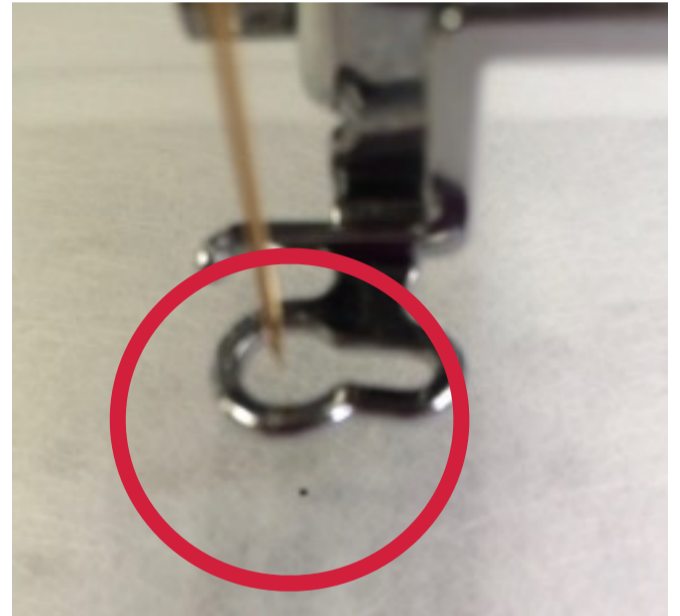




## Tied Napkin Ring Project Instructions

1. The designs in the collection Mylar Christmas Ornaments fit in a 4x4 hoop (100mm x 100mm hoop) so choose the corresponding hoop for your machine. Hoop the (1) - 10"x10" inch piece of Cutaway Stabilizer along with a hoop collar.
2. Open the design on your embroidery machine and attach the hoop to the machine.

3. Press the needle down button to mark a hole in the center of the hooped stabilizer. If you have a basting stitch feature on your embroidery machine or if can add it by using software, add it to the design that you want to make into a Tied Napkin Ring. Stitch the baste stitch the hooped stabilizer.



4. Remove the hoop from the machine and turn it to the backside. Notice the orientation of the design on the screen of your embroidery machine. It is at an angle. You will be laying the ribbon on the backside of the hoop so that it will be stitched to the design. Fold the 16" ribbon in half lengthwise to find the center. Align the center of the ribbon to the needle hole in the center of your hooped stabilizer. Extend each ribbon end at an angle to the corners of the basting stitch based upon the orientation of the design on the screen of your embroidery machine. Put a small piece to tape to hold it in place. Slide the hoop back on the machine.





5. Stitch the basting stitch again to tack down the ribbon.
6. Lay the 5"x5" square of Stitch N Shape in the hoop, (or Timtex®, or 2 5x5" squares stacked of Peltex®70) centered over the basting stitches and under the needle.
6. Stitch the design, consulting the color change chart to know when to lay down the mylar and when to remove the excess mylar.
7. Continue to stitch the design until it is complete. Remove everything from the hoop and trim closely around the design being careful not to cut the ribbons attached to the back of the design.
8. Punch a hole in the top and use the ribbons to tie the ornament around a napkin for a festive napkin ring or around a bottle of wine as a gift.

