

# The Sassy Screen Tote

*By Michelle Dorsey*



Completed size is approximately 12 1/2" wide x 11 1/2" tall, 4" deep

## COPYRIGHT INFORMATION

This pattern may not be mass produced. However, it may be used to sell handmade, by you, completed items with the following condition:

Please give SewMichelle full credit for the pattern design. For example, when selling online, please include the following sentence in your item description:

This item was made using a SewMichelle pattern.

This labor of love has been reasonably priced so please do not share or reproduce any part of it.

©SewMichelle 2014  
All Rights Reserved

[SewMichelle.com](http://SewMichelle.com)



# The Sassy Screen Tote

## *Before You Begin:*

*It is important to read through the entire pattern before beginning this project.*

### Starch and Iron All Fabrics

#### Before Cutting

**RST= Right Sides Together**  
**WST= Wrong Sides Together**  
**WOF = Width of Fabric**



My spray starch of choice is Niagara Non-Aerosol or Maxx by Faultless.

## Supplies Needed:

- 1/2 yd of Pet Screen/Vinyl Coated Mesh
- 1 1/2 yd Cotton Fabric -- **Fabric A (Main Fabric)**
- 3/4 yd Coordinating Cotton Fabric -- **Fabric B**
- 1/8 yd Cotton Fabric -- **Fabric C (To Match Screen)**
- 38" of 1" Webbing
- Pilot Frixion Marker
- Chalk Marker
- Coordinating Threads and Matching Bobbins
- Point Turner
- Size 16 or 18 Needle
- Clover Wonder Clips (Optional But Helpful)
- Edge Stitch Foot (Optional But Helpful)
- Scotch Tape
- Normal Sewing Notions

Allow extra yardage for directional fabrics

Templates are at the end of the pattern.  
Print both pieces for each size template  
and assemble according to instructions  
on Page 5



# The Sassy Screen Tote



## Cutting Instructions:



Vinyl Coated Mesh/Pet Screen Cut: (See tips for cutting screen on next page)

One 14" x 28" piece -- **body of purse**

### Fabric A Cut:

Four FULL SIZE pieces of Large Template

Four FULL SIZE pieces of Small Template

One strip 2 $\frac{3}{4}$ " x WOF - **trim on handle**

### Fabric B Cut:

Four FULL SIZE pieces of Medium Template

### Fabric C Cut:

One strip 2  $\frac{1}{2}$ " x WOF - **interior binding**

"Optional Cutting Instructions"  
for Fabric Template/Layer  
Pieces on Page 6



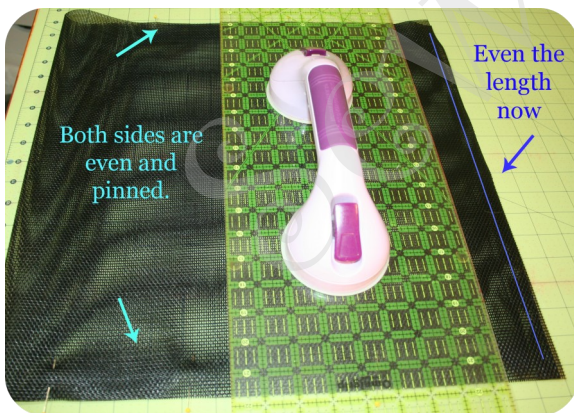


# The Sassy Screen Tote

## SCREEN CUTTING TIPS:



*I have found this method works best when trying to even screen up accurately.*



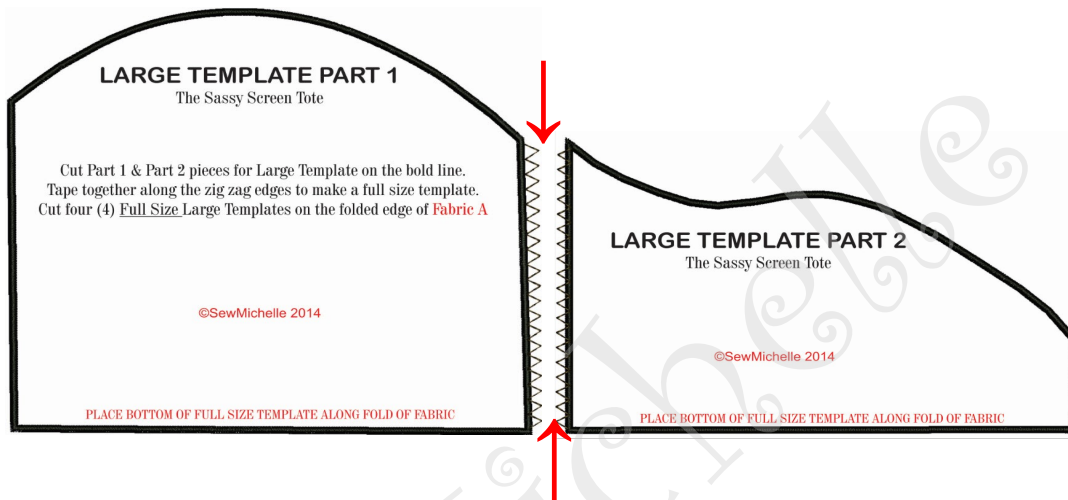
If working with a roll of screen, don't worry about cutting accurately straight off the roll. Instead, make your first cut off the roll a little bigger than is needed. In this case, since the final cut is to be 14" in **width**, I would initially cut the screen 16"x length of screen (normally a 36" length roll). Then fold the screen in half so that it is easier to work with and place it on your cutting table. Even one side by cutting it just enough to even it up with the rotary cutter. Then pin the side together to keep it from slipping while you cut the other side.

Once both sides are cut to the correct dimensions, position the ruler on the opposite end to cut the screen the correct **length**. Cut the folded piece 14". Thus making the final dimensions of the body of the purse **14"x 28"**.

# The Sassy Screen Tote

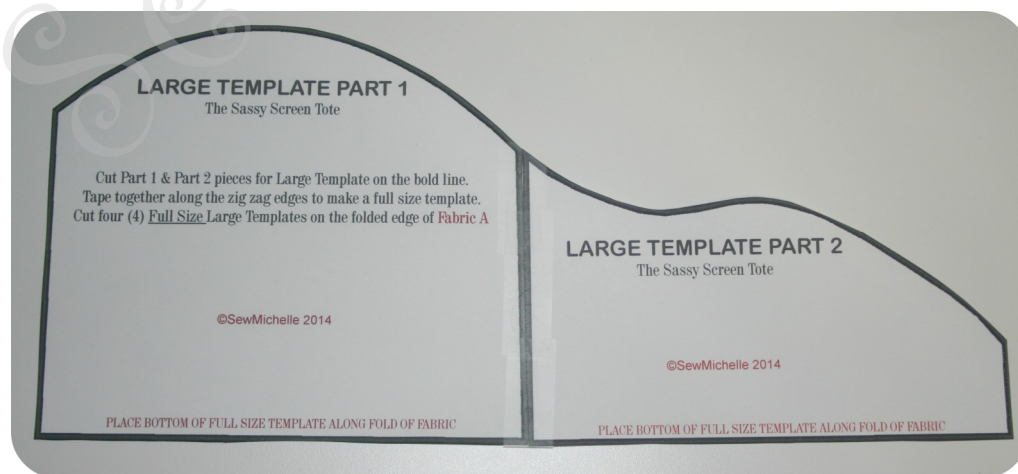
## Template Assembly Instructions

Actual template pieces are at the end of the pattern.



**MATCH SHORT SIDES WITH ZIG ZAG EDGES**

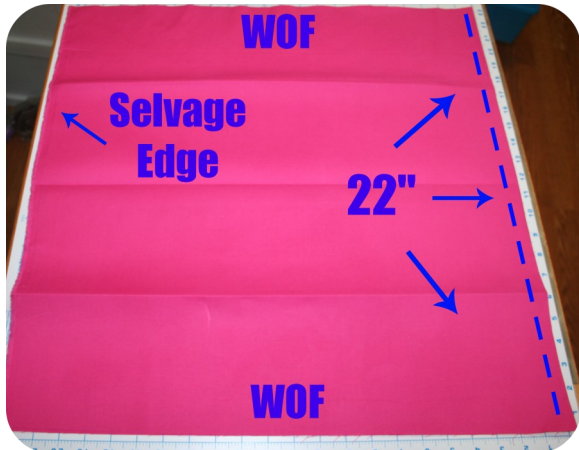
**PRINT BOTH PIECES FOR EACH SIZE TEMPLATE.** Cut out each piece on the bold black lines. Tape together on the edge with the zig zag. **DO NOT OVERLAP EDGES.** Each combined will be known as the **FULL SIZE Template**. There will be a **LARGE, MEDIUM** and a **SMALL** Template.



# The Sassy Screen Tote



## Optional Cutting Instructions for Fabric Template/Layer Pieces:

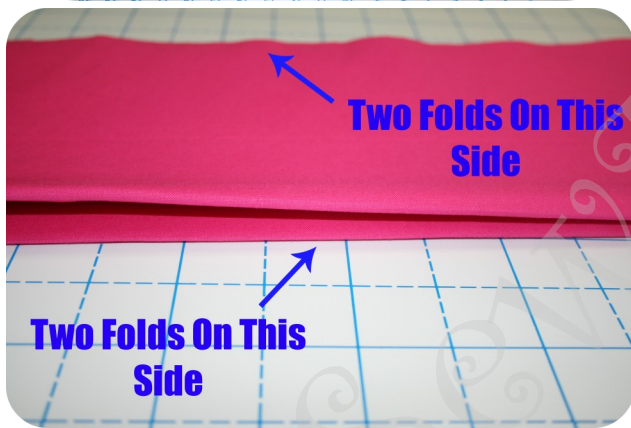


I have found this to be the easiest and most accurate way to cut multiple template pieces. It does waste a little fabric but I think the results are worth it. Save the excess for appliques so nothing really goes to waste.

Large Size Template cut strip from Fabric A 28" x WOF

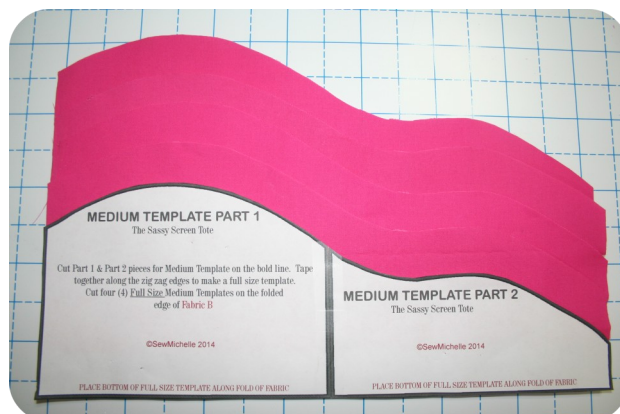
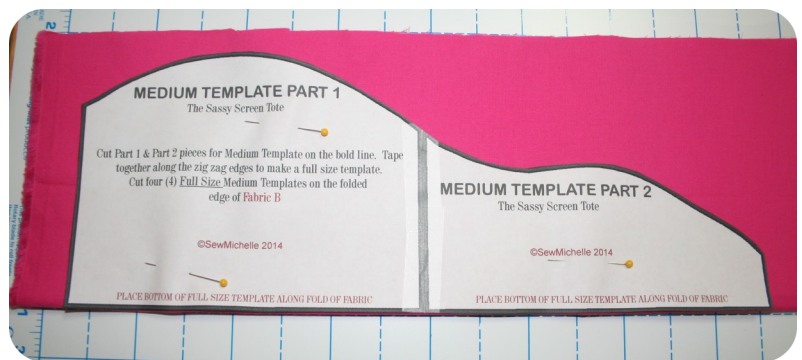
Medium Size Bag cut strip from Fabric B 22" x WOF.

Small Size Bag cut strip from Fabric A 19" x WOF.



Fold the fabric accordion style to where there are 4 folds (the fabric is doubled - two folds in the front and two folds in the back) wide enough to fit the template you are cutting. I am using Fabric B in the example and the Medium Full Size Template.

Place the bottom edge of the FULL SIZE Template on the fold; pin. Trace and cut out four templates, on the fold at the same time. Thus, making it easier and more accurate template cutting.





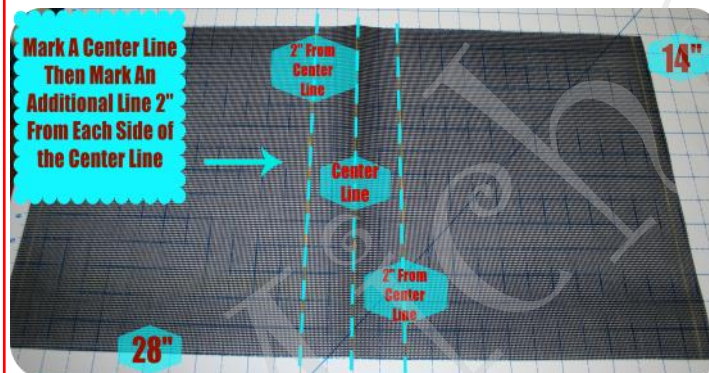
# The Sassy Screen Tote

## STEP ONE: PREPARING THE SCREEN

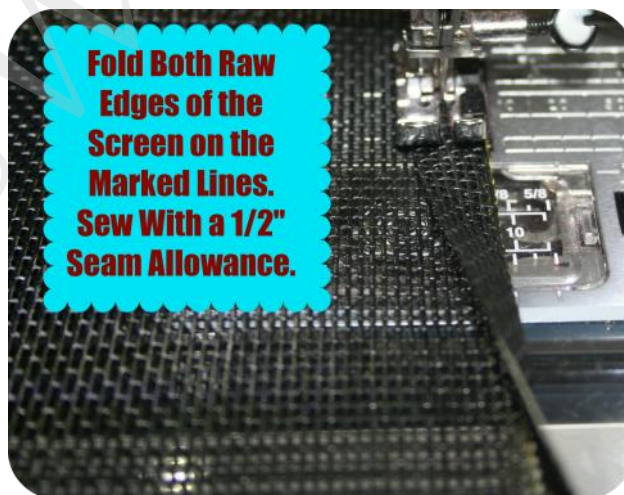
Place the 14" x 28" piece on a flat surface. On both the short ends of the screen, mark a straight line  $\frac{1}{2}$ " from the raw edge.



Find and mark the center of the 28" side (center will be 14") with a straight line. Make an additional mark 2" on each side of the center line. These marked lines will be known as the guide lines.



Fold both the short ends of the screen on the  $\frac{1}{2}$ " marked lines. Sew both folded edges with a scant  $\frac{1}{2}$ " seam. Set screen aside for now.



## STEP TWO: THE HANDLES

Fold the  $2\frac{3}{4}$ " x WOF strip of **Fabric A** in half lengthwise, WST. Press a crease.



Fold each raw edge to the center crease. Press.




Fold again to conceal all the raw edges lengthwise; press.



This will yield a strip about  $\frac{7}{8}$ " wide.



# The Sassy Screen Tote



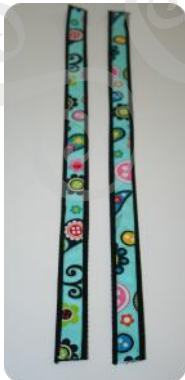
Place the folded strip of fabric in the middle of the 1" webbing; pin.



**Edge Stitch Strip to the Webbing**

Edge stitch both long sides of the strip to the webbing.

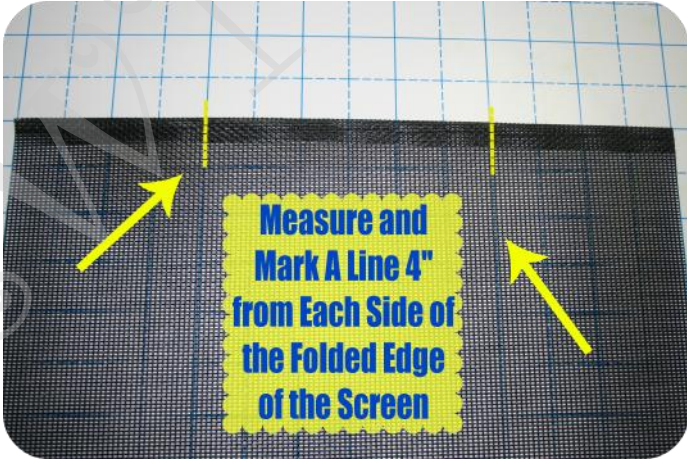
Cut the webbing in half to make two equal pieces 19" in length.



**Mark a Line 1/2" From Each Raw Edge of Both Handles**

Measure and mark a line 1/2" from each raw edge on all four short ends of the handles.

## **STEP THREE:** **ATTACHING** **THE HANDLES**



**Measure and Mark A Line 4" from Each Side of the Folded Edge of the Screen**

Place the screen on a flat surface. Measure and mark a line 4" from each side of the folded edge of the screen for handle placement.



**Align Folded Edge of Screen with the 1/2" Marked Lines on the Handles**

Using the 1/2" mark on the handle as a guide, align one end of one handle on the folded edge of the screen. Pin. Place other end of the same handle on the marked line on the screen. Pin. Sew with a 1/4" seam allowance. Repeat this step to attach the other handle to the other folded end of the screen.

Set screen aside for now.





# The Sassy Screen Tote

## **STEP FOUR:** **PREPARING THE** **LAYERS OF FABRIC**



Place one of the 12 layers cut out from the FULL SIZE Templates, RST. Pin.



Sew each fabric layer RST using a 1/4" seam allowance along the curve only. Leave the sides open for turning.



Clip the curved seam about every 1/2".



Turn right side facing out. Press.



Repeat these steps until all 12 pieces of the cut templates/fabric layers are sewn together.



# The Sassy Screen Tote

## **STEP FIVE:** **ASSEMBLING THE** **LAYERS ON THE** **SCREEN**

Place one folded end of the screen on a flat surface. Align the large size fabric layer with the folded edge of the screen.

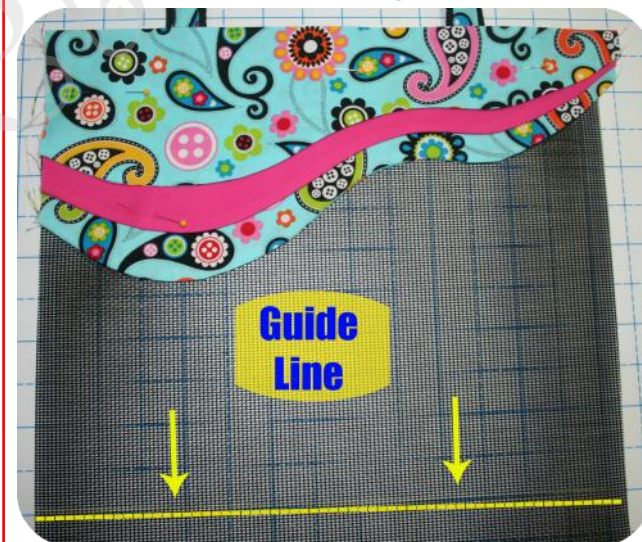


Place a medium size layer on top of the large piece. Align it with the top of the folded edge of the screen.



Place the small size layer on top of the medium piece. Align it with the top of the folded edge of the screen. Pin to hold all of the fabric templates/layers in place.

Using the marked guide line closest to the top layers, place the fabric layers in the same order, turning them upside down and mirror imaging them while aligning them with the marked guide line.



Once all layers are stacked and aligned with the guide line, secure to screen with pins.



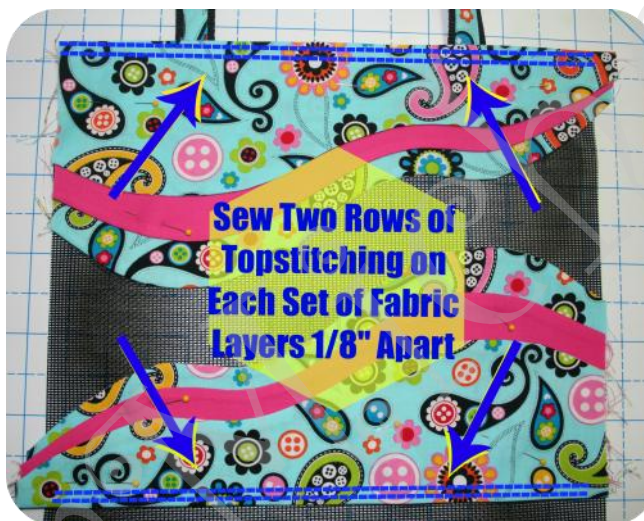


# The Sassy Screen Tote

Repeat the steps for layering the fabric templates on the other side of the center marked line of the screen. Your Sassy Screen Tote should resemble the picture below.



Sew two rows of topstitching about  $\frac{1}{8}$ " apart on each set of fabric layers to attach them to the screen. Backstitch over each handle.



## **STEP SIX:** **ASSEMBLING THE** **TOTE**



*HINT: Change to the 16 or 18 size needle before Step Six.*



Fold the sides of the tote bag RST. Trim any excess fabric.



Align the bottom side seams; pin. Continue pinning the sides and the opening of the bag.



Sew both sides of the bag with a  $\frac{1}{2}$ " seam allowance.



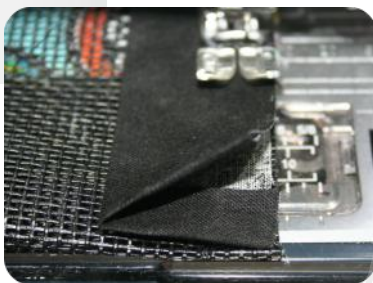


# The Sassy Screen Tote

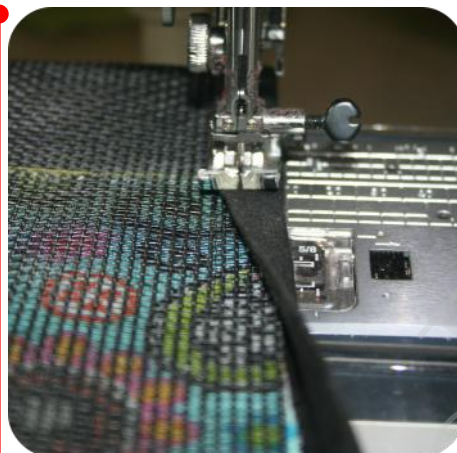
## **STEP SEVEN:** **COVERING THE** **INTERIOR RAW EDGES**



Fold the 2½" strip of **Fabric C** in half lengthwise; press.



Bind the raw edges of the inside of the tote with folded fabric strip. Start at the top of the bag, making sure to fold the top and bottom of the fabric strip down about a ½". Stitch with a ¼" seam allowance.



Fold the fabric over to bind the raw edges. It gives the inside seam a nice clean finish. Stitch with a scant ¼" seam.

## **STEP EIGHT:** **BOXING THE CORNERS**

Pinch the bottom corner of one side of the screen to form a triangle. Stitch across the base of the screen with a scant ¼", aligning pressure foot with the edge of the fabric layers. Repeat step to box the corner on the other side.



Turn the tote bag right side facing out. Press the fabric layers if necessary.

Admire your work.

**YOU ARE DONE!**

**ENJOY** your Sassy Screen Tote Bag!  
You did a GREAT Job!



[SewMichelle.com](http://SewMichelle.com)





1"

## LARGE TEMPLATE PART 1

The Sassy Screen Tote

Cut Part 1 & Part 2 pieces for Large Template on the bold line.  
Tape together along the zig zag edges to make a full size template.  
Cut four (4) Full Size Large Templates on the folded edge of **Fabric A**

©SewMichelle 2014

PLACE BOTTOM OF FULL SIZE TEMPLATE ALONG FOLD OF FABRIC

1"

## LARGE TEMPLATE PART 2

The Sassy Screen Tote

©SewMichelle 2014

PLACE BOTTOM OF FULL SIZE TEMPLATE ALONG FOLD OF FABRIC



1"

## MEDIUM TEMPLATE PART 1

The Sassy Screen Tote

Cut Part 1 & Part 2 pieces for Medium Template on the bold line. Tape together along the zig zag edges to make a full size template.

Cut four (4) Full Size Medium Templates on the folded edge of **Fabric B**

©SewMichelle 2014

PLACE BOTTOM OF FULL SIZE TEMPLATE ALONG FOLD OF FABRIC



## **MEDIUM TEMPLATE PART 2**

The Sassy Screen Tote

©SewMichelle 2014

PLACE BOTTOM OF FULL SIZE TEMPLATE ALONG FOLD OF FABRIC

1"

## SMALL TEMPLATE PART 1

The Sassy Screen Tote

Cut Part 1 & Part 2 pieces for Small Template on the bold line. Tape together along the zig zag edges to make a full size template.

Cut four (4) Full Size Small Templates on the folded edge of **Fabric A**

©SewMichelle 2014

PLACE BOTTOM OF FULL SIZE TEMPLATE ALONG FOLD OF FABRIC



