

Girlfriends Notebook Cover

By Michelle Dorsey



Completed folded size approximately 8" wide x 10 1/2" tall
Embroidery Design is 4.96 x 6.90; has 16117 stitches and 13 Color Stops

COPYRIGHT INFORMATION

This pattern may not be mass produced. However, it may be used to sell handmade, projects by you at artisan venues or online as long as you give SewMichelle credit for the pattern.

This pattern is the sole property of SewMichelle and may not be reproduced or duplicated in any form ~ even for teaching purposes.

This labor of love has been reasonably priced so please do not share or reproduce any part of it.

©SewMichelle 2015 All Rights Reserved



SewMichelle.com

Girlfriends Notebook Cover

Before You Begin:

It is important to read through the entire pattern before beginning this project.

Starch and Iron All Fabrics Before Cutting

RST= Right Sides Together
WST= Wrong Sides Together



My spray starch of choice is
Niagara Non-Aerosol
or Maxx by Faultless.

Supplies Needed:

- 8" x 10 1/2" Spiral Notebook
- One Fat Quarter Cotton Fabric for Body of Cover - **Fabric A**
- 1/3 yd Coordinating Cotton Fabric for Lining, Flaps, Spine and Dress - **Fabric B**
- 3" x 3" Cotton Fabric for Skirt on Left Girl - **Fabric C**
- 12" of 5/8" Rick Rack
- 1/2 yd Pellon Décor Bond Stabilizer
- Applique Scissors (optional but helpful)
- 6" of 1/4" Grosgrain Ribbon
- Frixion Marker
- Wonder Tape
- Normal Sewing Notions



Allow extra
yardage for
directional fabrics

Embroidery Supplies Needed:

- 5" x 7" Hoop
- Sticky Stabilizer
- Assorted Embroidery Threads
- Normal Embroidery Notions

Mettler is my thread brand
of choice

AMANN
GROUP

Mettler®

Thread.Color.Imagination.

Print the
Girlfriends
Template
at the end of the
pattern for help with
embroidery alignment.

SewMichelle.com



Girlfriends Notebook Cover



Cutting Instructions:



Fabric A Cut:

Two 8" x 11 1/4" pieces -- **body**

Fabric B Cut:

One 3 1/4" x 11 1/4" -- **spine**

One 3" x 3" -- **dress**

Two 5" x 11 1/4" pieces -- **interior flaps**

One 13" x 11 1/4" piece -- **lining**

Fabric C Cut:

One 3" x 3" piece -- **skirt**

Décor Bond Stabilizer Cut:

****One 18" x 11 1/4" piece -- set aside for now**

Two 11 1/4" x 5" pieces -- **interior flaps**

One 13" x 11 1/4" piece -- **lining**

**** Will be fused to fabric in a later step.**

Fuse stabilizer to wrong side of corresponding size fabrics according to manufacturer's instructions.



Girlfriends Notebook Cover

Print the [Girlfriends Template](#) at the end of the pattern for help with embroidery alignment.

STEP ONE: **PREPARING THE** **EXTERIOR PIECE**

Place the 3 1/4" x 11 1/4" of **Fabric B** on a flat surface. Place a strip of Wonder Tape along one long edge. Peel back the paper to expose the sticky. Align the 12" piece of rick rack on the long edge of the Wonder Tape. Substitute fabric glue for Wonder Tape if desired.

**Align Rick Rack Along
Edge of Fabric**



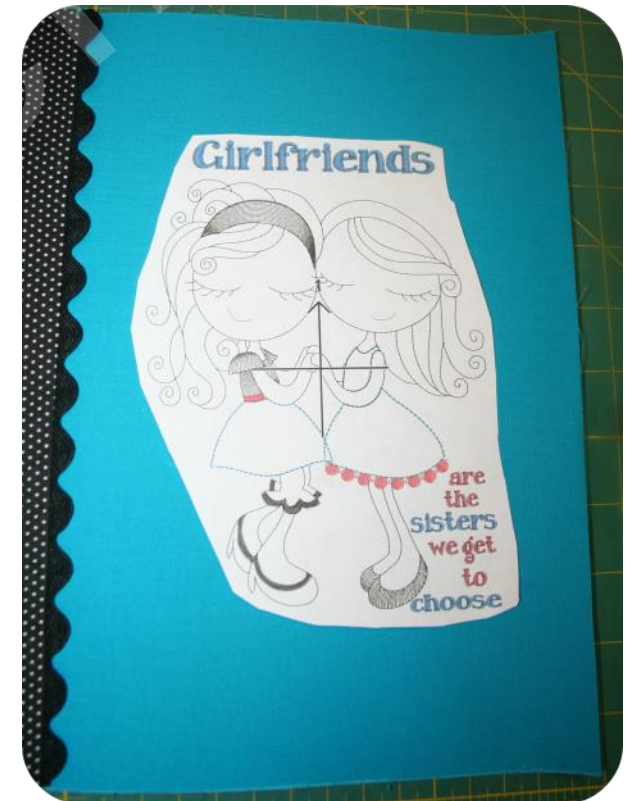
Place one 8" x 11 1/4" piece of **Fabric A** on a flat surface. Align the edge of **Fabric B** with the rick rack along the long edge of **Fabric A** RST; pin. Sew with a 1/4" seam allowance. Press seam open.



Attach the remaining 8" x 11 1/4" piece of **Fabric A** along the other long edge of **Fabric B** (without rick rack) RST using a 1/4" seam. Press. Note that the rick rack will be on the right piece of **Fabric A** only. This will now be known as the joined piece.

Fuse the 18" x 11 1/4" piece of Décor Bond to the wrong side of the joined piece according to manufacturer's instructions.

Use the template at the end of the pattern to align the embroidery design in a pleasing manner on the right side of the joined piece with the rick rack. Mark the cross hairs using a Frixion marker.

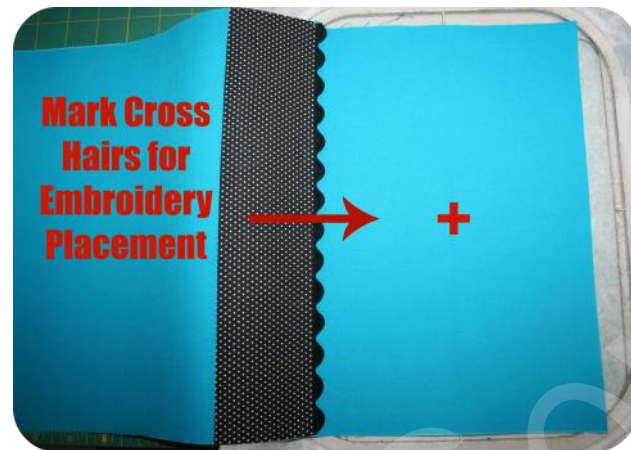


Girlfriends Notebook Cover

STEP TWO: EMBROIDERY



Hoop a piece of Sticky Stabilizer in the 5" x 7" hoop. Score the top piece and remove the paper to expose the sticky.



Place the joined piece on the hooped sticky stabilizer. Align the marked cross hairs with your embroidery machine. Follow the Color Stops to stitch out the design. Note that some of the Color Stops are appliqué and may not necessarily need thread changes.



Color Stops for Embroidery:

Use Black Thread

1. Feet and shoes for friend on right.

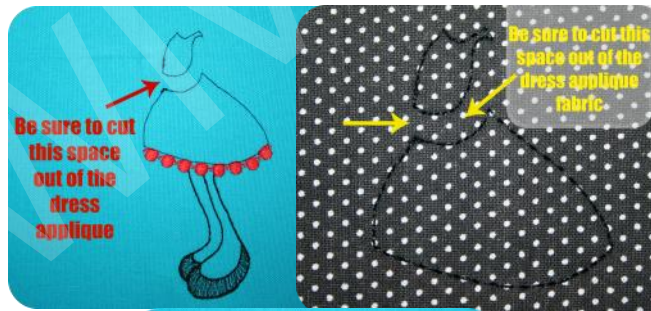
Use Red Thread

2. Lace along bottom of dress.

Use Black Thread

3. Placement for dress. Once machine has stopped, place 3" x 3" piece of **Fabric B** on top of stitched lines. Proceed to Color Stop #4.

4. Tacking stitch. Once machine has stopped, remove hoop. Trim close to stitched lines taking care not to cut through stitches. Replace hoop onto machine. Proceed with Color Stop #5.



Color Stops for Embroidery:

5. Final tacking stitch for raw edge appliqué on dress.

6. Faces, hair and detail on both friends.

Use Red Thread

7. Placement for skirt. Once machine as stopped, place 3" x 3" piece of **Fabric C** on top of stitched lines. Proceed to Color Stop #8.

8. Tacking stitch. Once machine has stopped, remove hoop. Trim close to stitched lines taking care not to cut through stitches. Replace hoop onto machine. Proceed with Color Stop #9

9. Final tacking stitch for raw edge appliqué on skirt.

Use Black Thread

10. Satin stitch on top of skirt.

11. Mouth/lips. (Optional red or black thread - your choice)

Use Red Thread

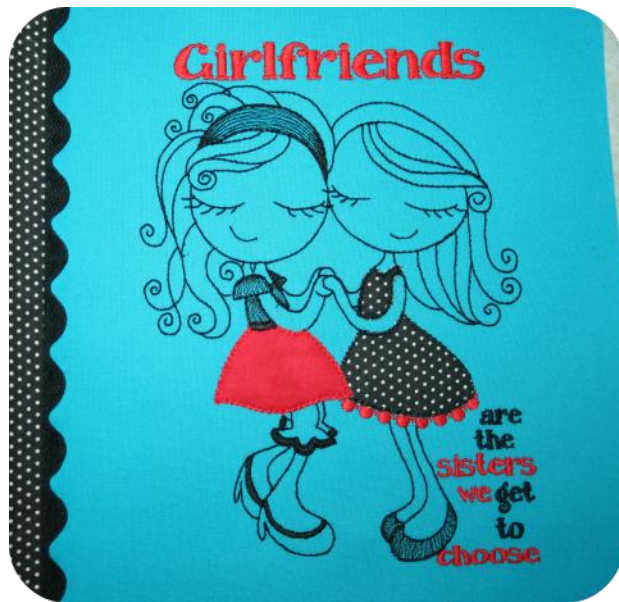
12. Lettering (Girlfriends, sisters, we, choose)

Use Black Thread

13. Lettering (are, the, get, to)

Girlfriends Notebook Cover

Once embroidery is complete, remove hoop from machine. Clip all jump threads. Gently detach the joined piece from the hooped stabilizer.



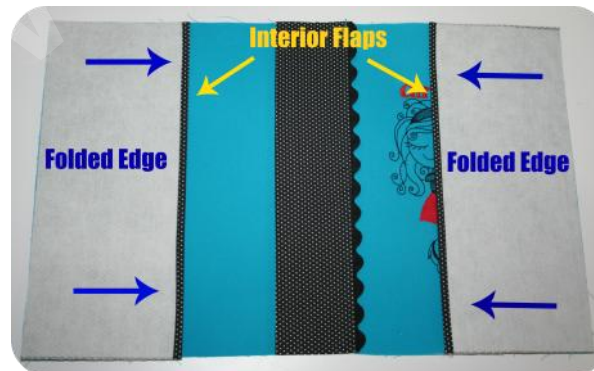
STEP THREE: ASSEMBLING THE INTERIOR FLAPS

Fold one long end of each 11 1/4" x 5" piece of **Fabric B** under a 1/4" and topstitch to conceal the raw edge.



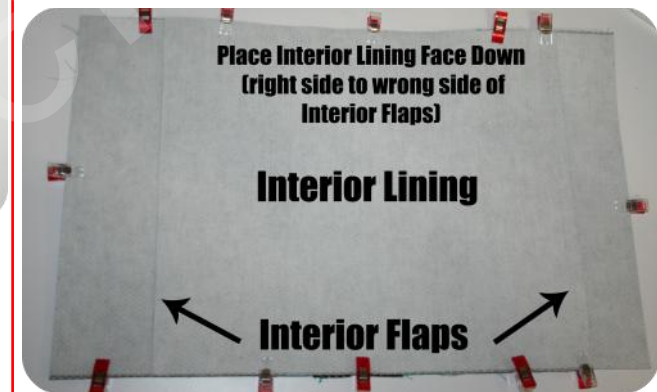
STEP FOUR: PUTTING IT ALL TOGETHER

Place the joined piece on a flat surface. Place one interior flap on each end of the joined piece, RST. Align raw edges; pin.

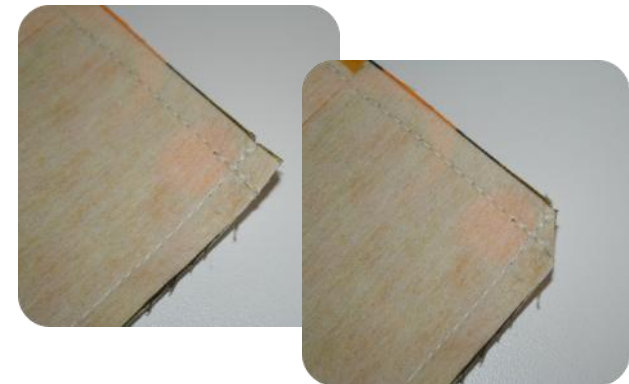


Center the 13" x 11 1/4" piece of **Fabric B**, face down (right sides against wrong side of interior flaps) on top of the interior flaps and the exterior piece.

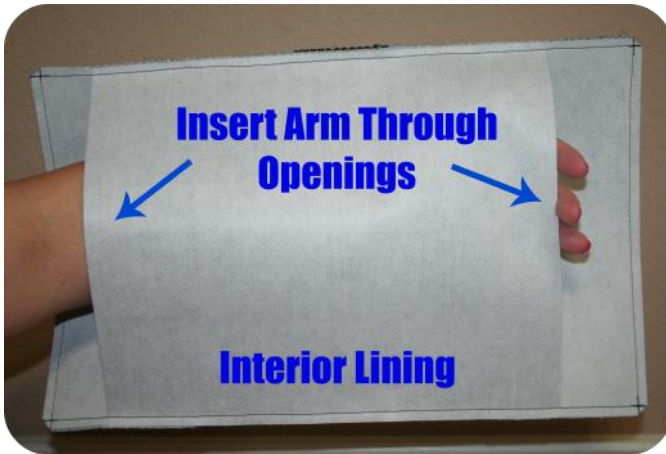
Pin to secure all layers together.



Sew around entire perimeter with a scant 1/4" seam allowance. Clip all four corners.



Girlfriends Notebook Cover



Insert your arm through the open ends.
Pull the lining through to turn the
notebook cover inside out.



Turn the interior flaps on each end
right side facing out.

Press both sides of your notebook cover.



Insert an 8" x 10 1/2" Spiral Notebook. Use
hot glue to adorn the girl's hair with bows
and/or bling their shoes. YOU ARE DONE!
Won't your girlfriends just squeal when you
give them one of these adorable
notebook covers?

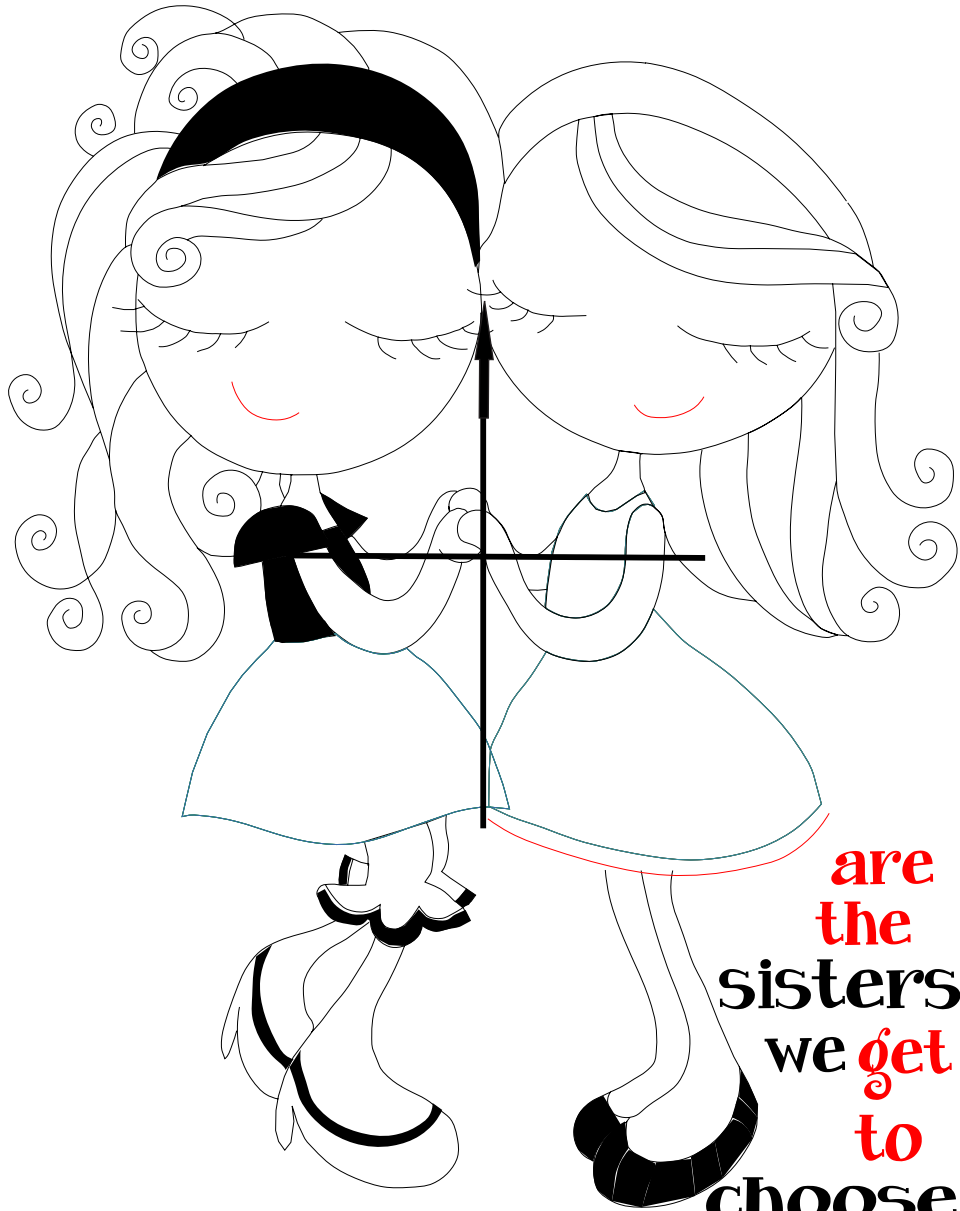
ENJOY!!



SewMichelle.com



Girlfriends



are
the
sisters
we get
to
choose