



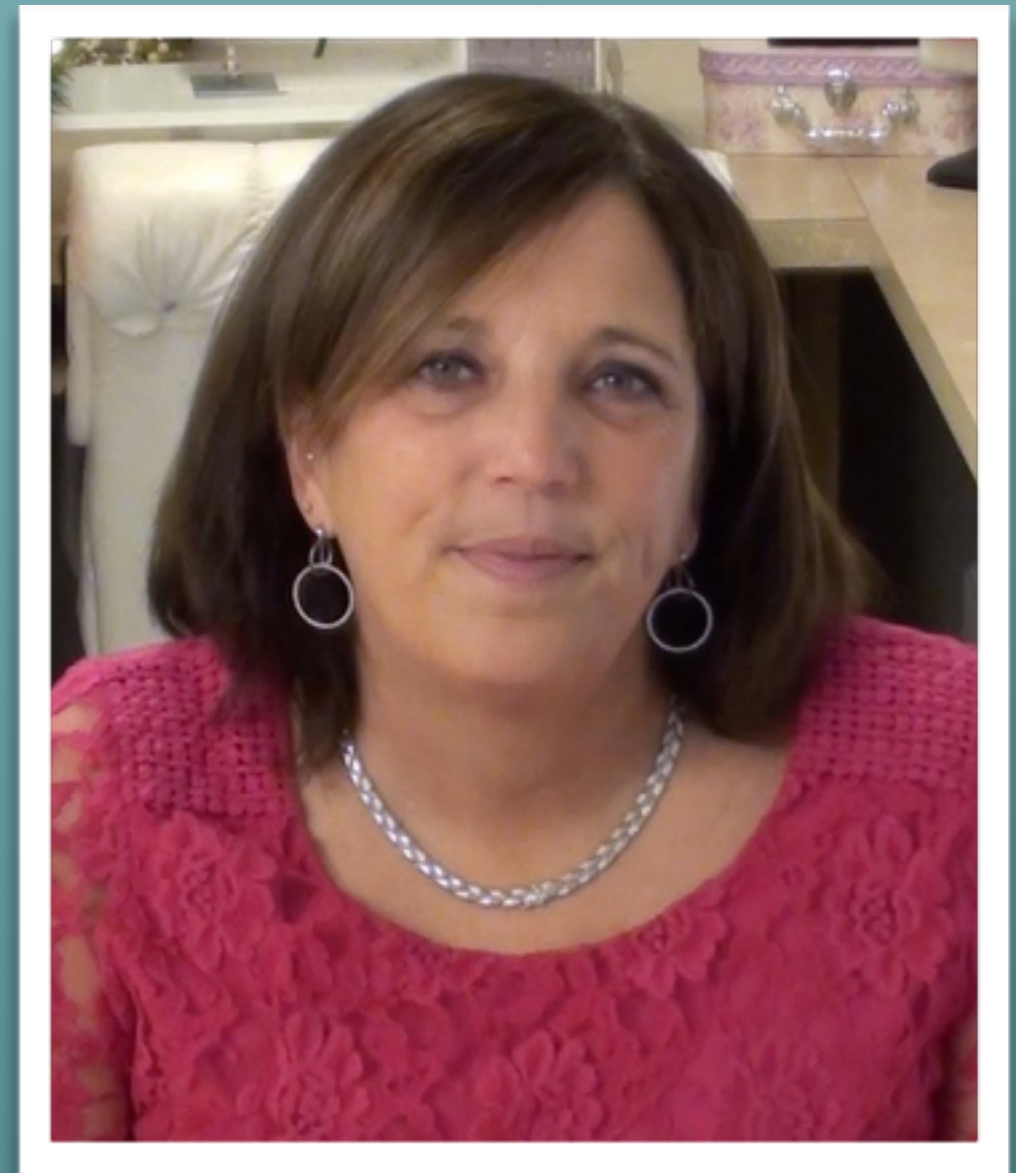
Margaret Moorehead's

Virtual Sewing Guild



Powered by
YOU

Virtual Sewing Guild Members





- 1 I have trouble lining up large designs when working with sticky stabilizer
- 2 How to line up designs that require more than one hooping?
- 3 Questions about the 350 x 360 hoop
- 4 Any info on Fabric Cutting machines
- 5 How to add wide gathered lace to the bottom of a sweater?
- 6 Lace Embroidery: stabilizer, thread weight, designs
- 7 What is the best method for making the placement lines?
- 8 Help with aligning my designs in the hoop when using sticky stabilizer
- 9 Confused about working with organza and design types.



- 10 When to use different threads?
- 11 I am new to Facebook. Do you have a place where you put information?
- 12 Can I share your newsletters with my friends?
- 13 When does my membership expire?
- 14 I noticed you were using a glue gun in the Terial Magic Class. Do you use a special glue when working on fabric?



Design Placement



Templates

Stitch advancement

Embroidered Placement Marks

Pfaff Perfect Placement

Built in Camera



Design Placement

Sticky Stabilizer Overview



Hooping

- When using sticky stabilizer, hoop with the protective paper side up, score an "X" through the center and remove the protective paper.





Design Placement



Sticky Stabilizer

Hooping

- I like to then attach the hoop to the embroidery machine center the project under the needle, line up the brail marks with the lines on my project and then gently press the project onto the sticky stabilizer and base in place.





Design Placement

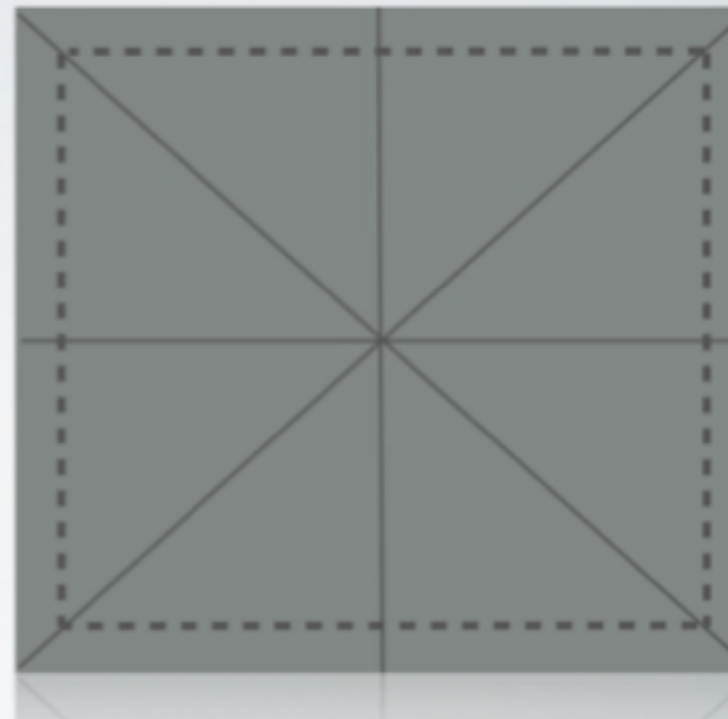


Templates
Stitch advancement

Lines and Measurements

When working on a quilt block, also draw the FINISHED block line.

When you do this extra step you will know EXACTLY how the designs will look in the finished size square



This extra step will save you lots of frustration!



Design Placement



Templates
Stitch advancement





Design Placement

Templates
Stitch advancement



Instead of just marking the center and lining it up, take one more step toward perfection...advance to a stitch that you want to line up with the already stitched out design and see if it lines up how you want. If not, move the design on the screen to make it line up exactly as you want.

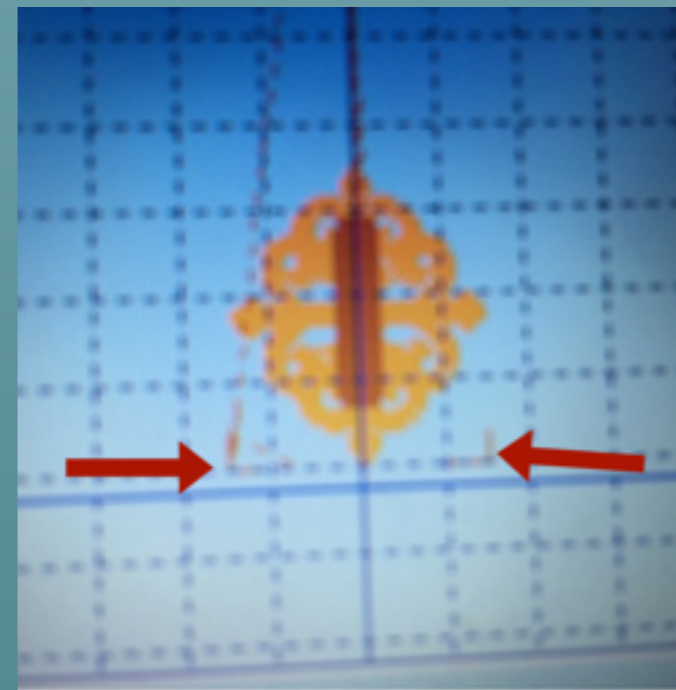
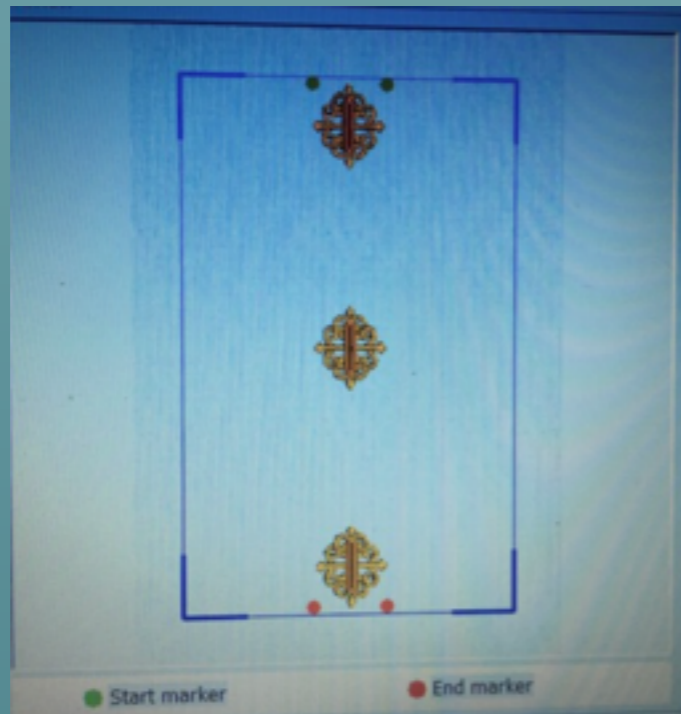


Design Placement

Placement Marks



Some designs come with placement/line up stitches.
These can be corner marks or in the center
Some softwares and machines have the ability to add these to your designs





Design Placement

Placement Marks

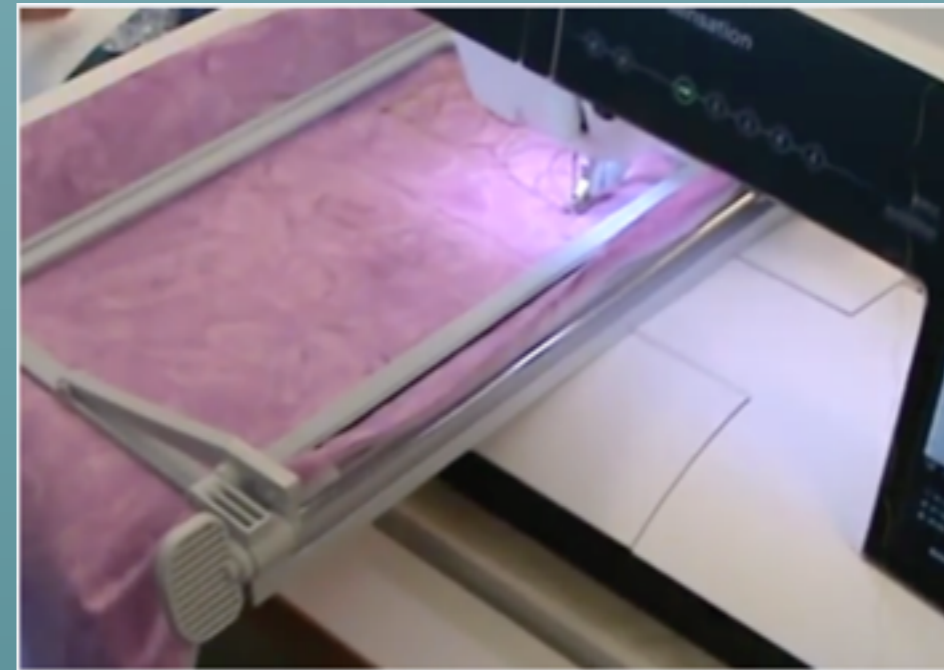


Stitch out the first design.
Allow the placement stitches to stitch



Design Placement

Placement Marks



Re-hoop and advance to the placement stitches that were previously stitched out.

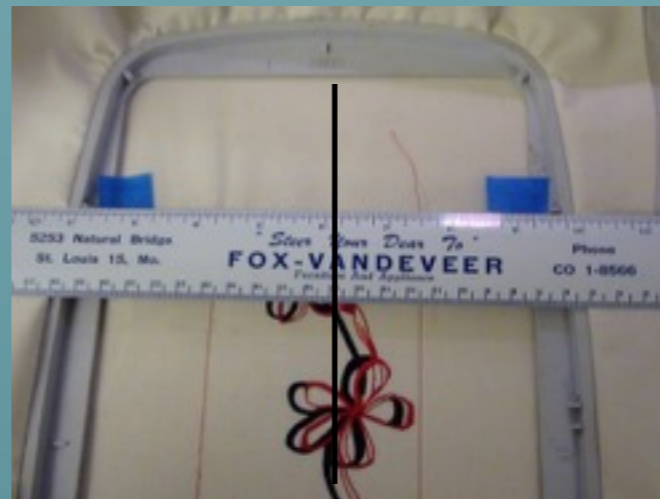
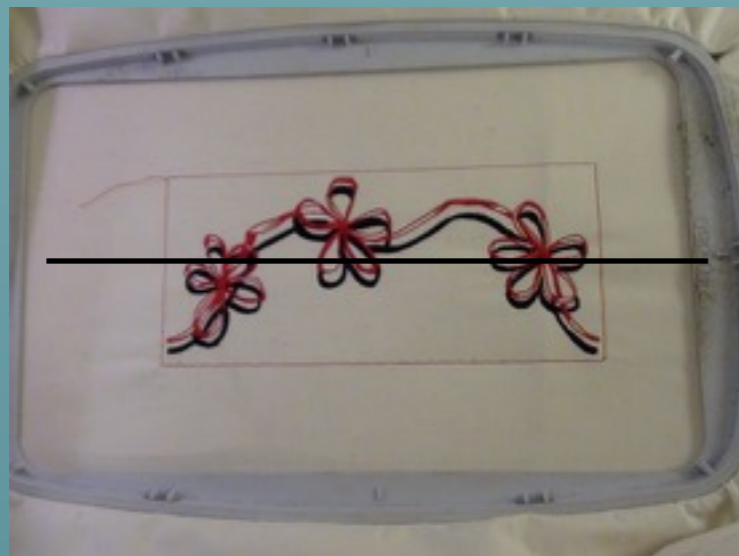
If the needle does not line up with the already stitched placement stitches, move the design (on the screen) or the project (if using sticky stabilizer) until it is lined up correctly.



Design Placement



Pfaff Perfect Placement
Viking users will use the
“Design Positioning”



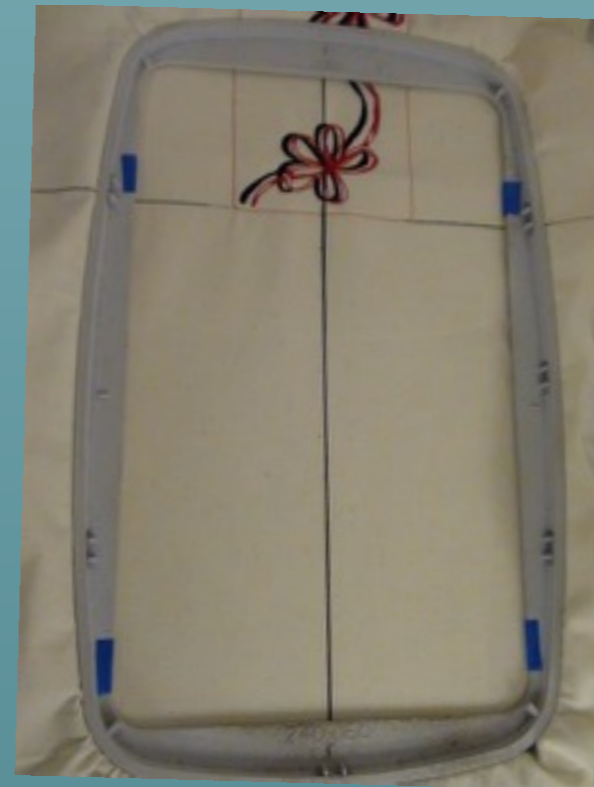
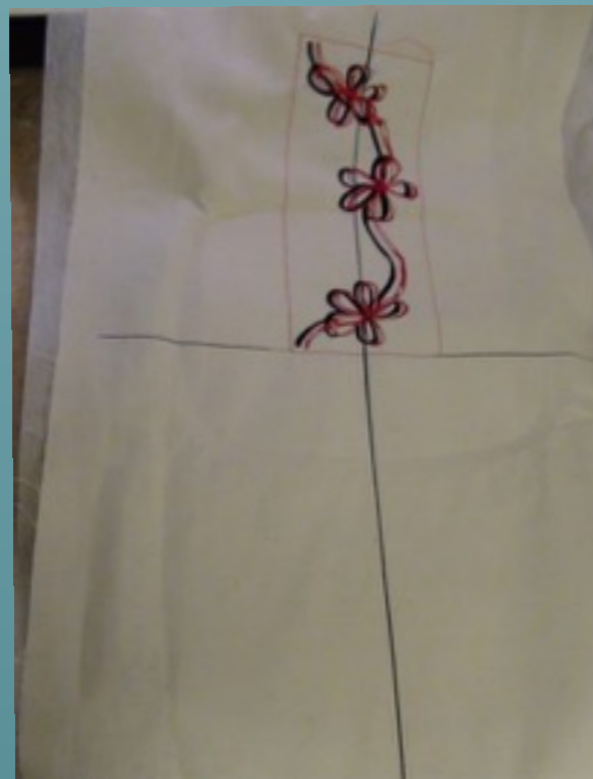
- Stabilize Well
- Mark your fabric for line up purposes
- Stitch out the first design
- Mark your hoop with painters tape to make re-hooping easier



Design Placement



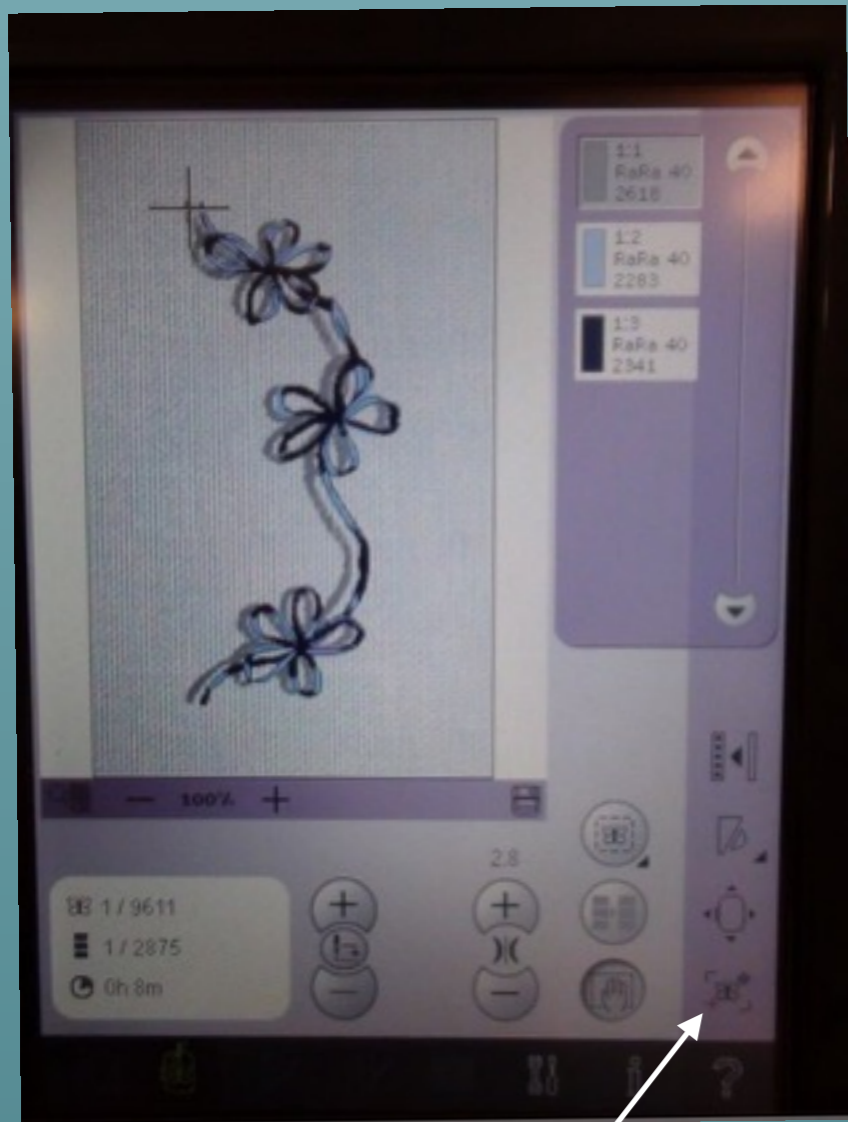
Pfaff Perfect Placement



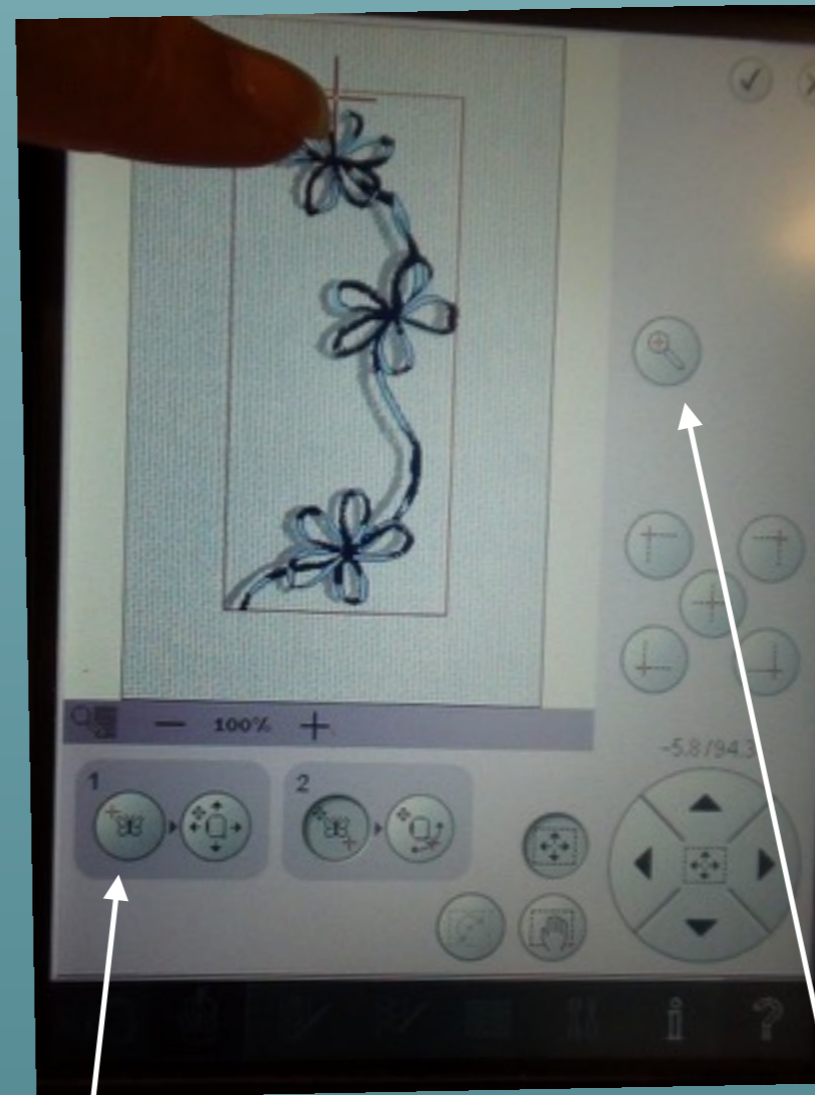
- Draw a line across the fabric to extend the bottom horizontal basting line
- Line up the horizontal line so it is just inside the painters tape
- Line up the vertical line with the center marks on the hoop

Design Placement

Pfaff Perfect Placement



Touch the Perfect Placement Icon



By default box "1" is active and the icon on the left side (the icon for the first step) is active

You can select two line up points for your design.

Lining up each point is a two step process.

1. "Lock" the needle ("+") on a stitch
2. Move the hoop so the stitch we "locked" the needle on will go into our project at the exact right spot.

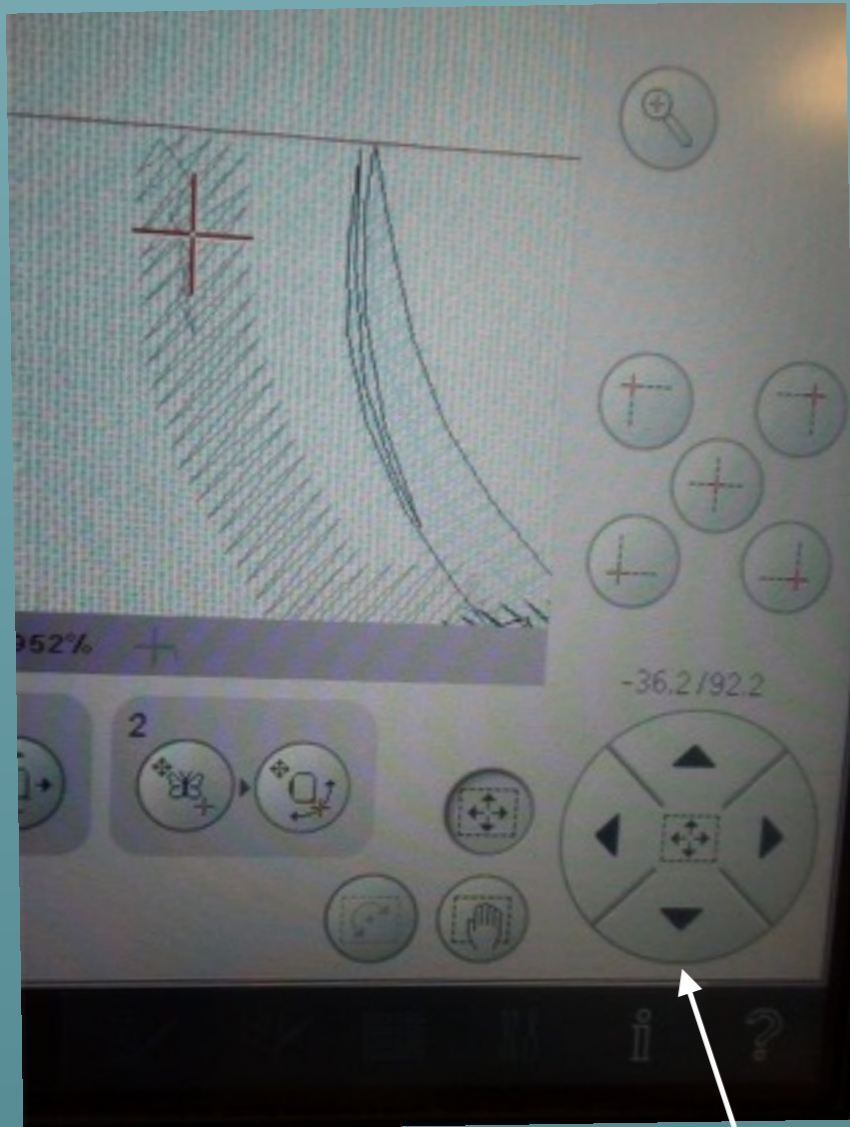
You currently have one "+" on the screen.

This plus sign needs to be placed on the exact stitch of the design you will use for line up

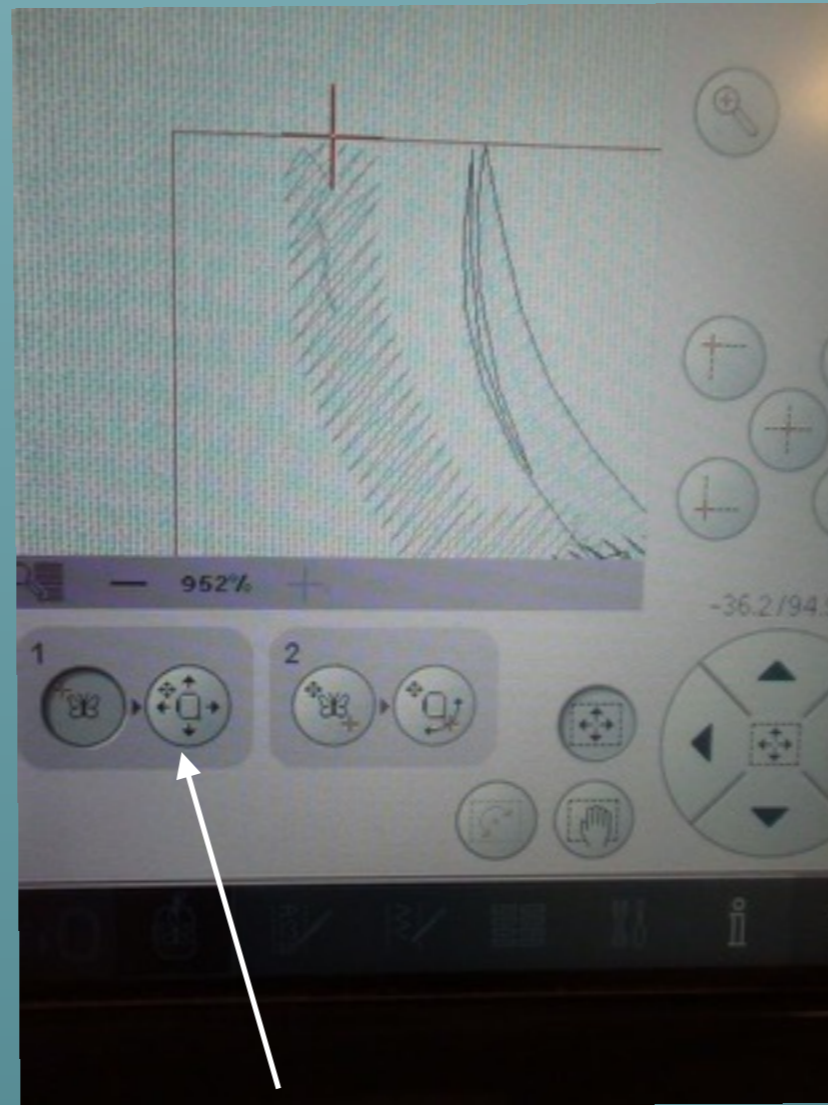
Click on the zoom icon on the right middle part of the screen

Design Placement

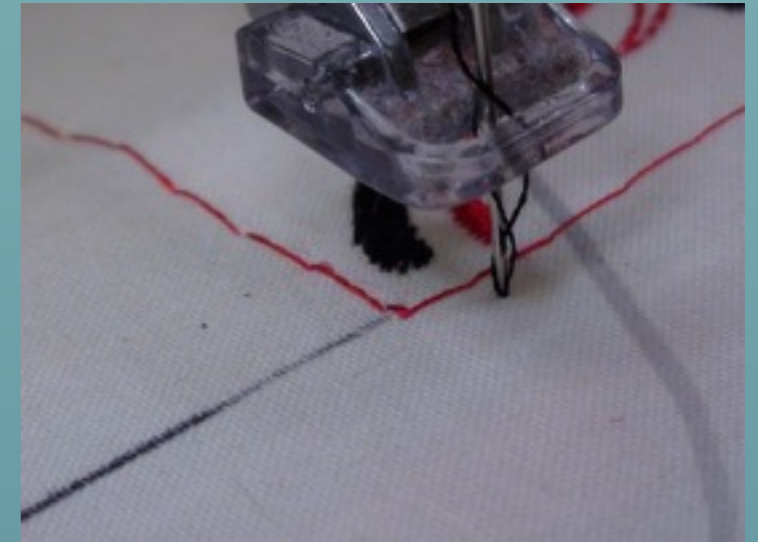
Pfaff Perfect Placement



Touch and drag the “+” to move or use the directional arrows.



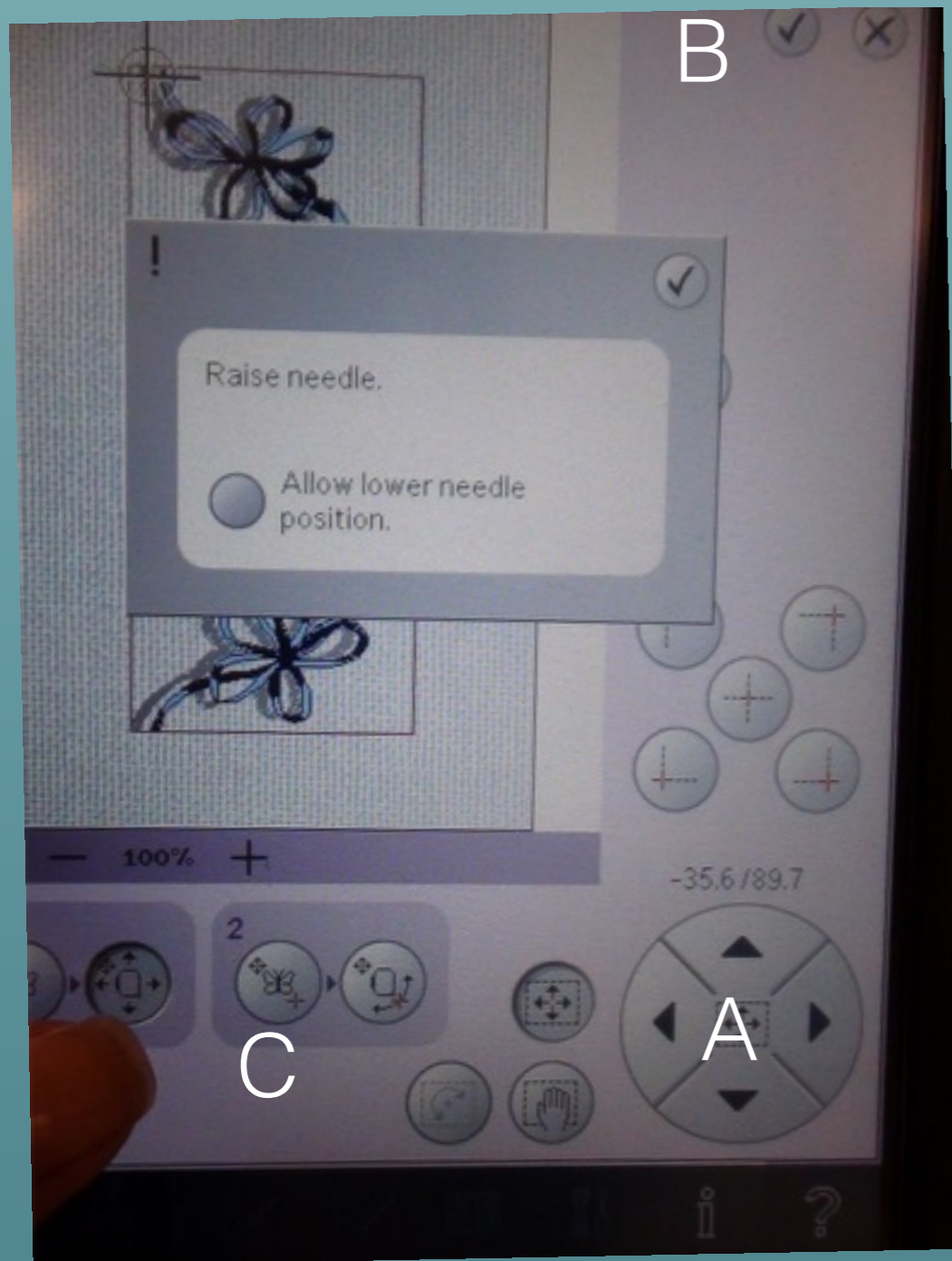
Once it placed where you want it click the icon in box 1 on the right (move hoop icon)



Lower your needle.
Is the needle entering the design where you want it to?
Most likely not

Design Placement

Pfaff Perfect Placement



Raise your needle so it is out of the fabric, but still near the design.

Use the directional arrows to move your design (A)
Message appears.

Allow lower needle position?

I like to allow this so I click on the icon and then click the check mark

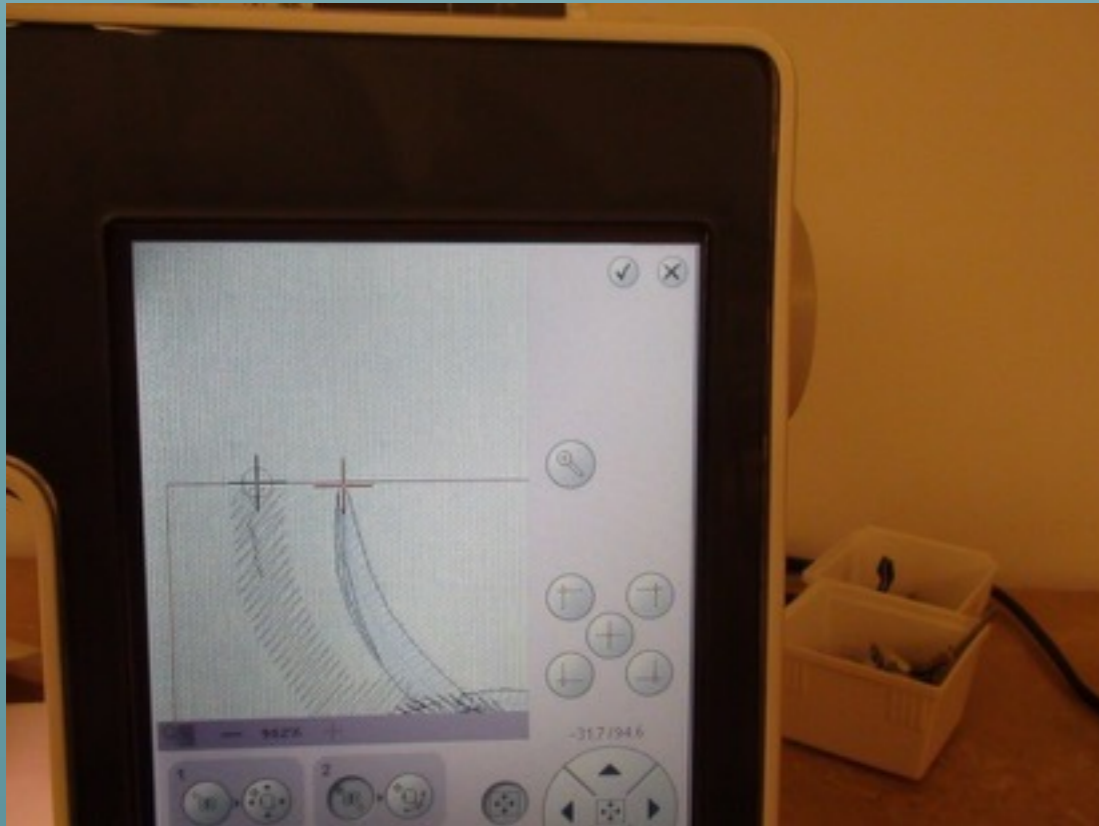
Continue to use the directional arrows until the needle is exactly where you want it on your design

If you are finished and do not want to use another line up point click on the check mark at the top right of the screen (B)

If you would like to use the second line up point click on the first icon in box 2 (C)

Design Placement

Pfaff Perfect Placement

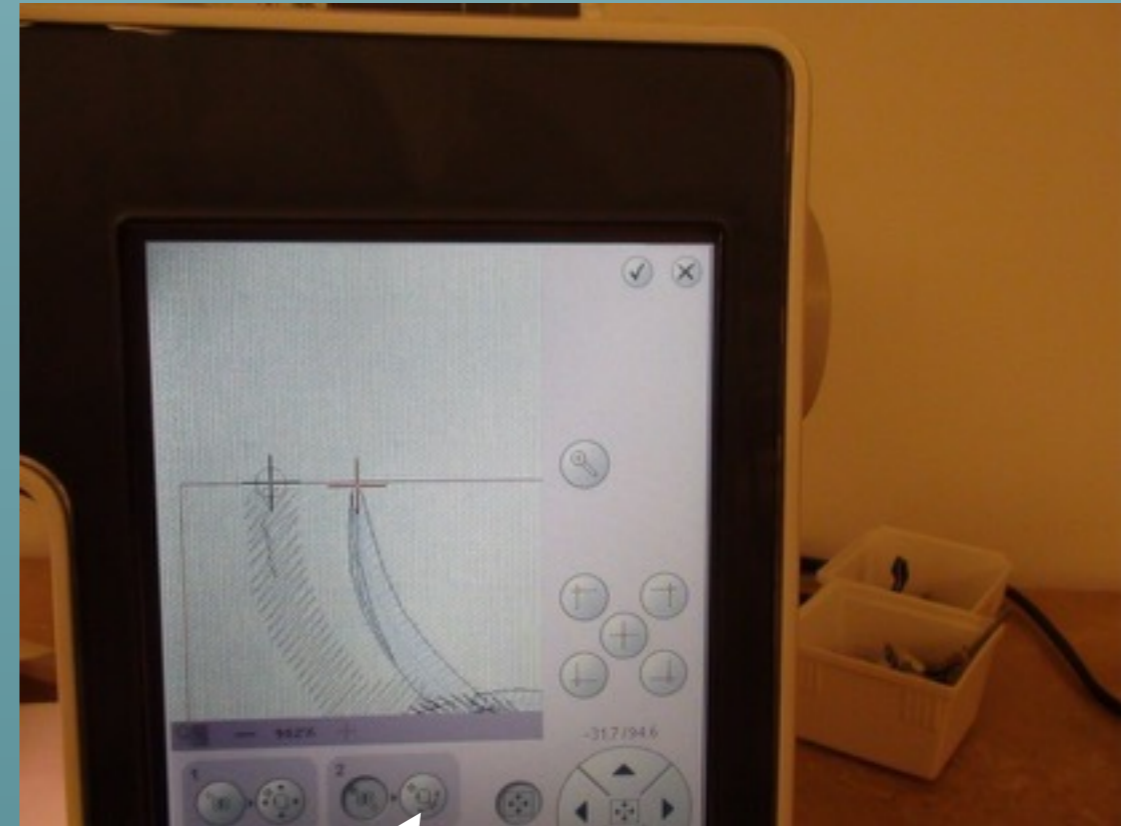


You now have two “+” signs on the screen a red one and a black one.

The red one is the active one.

If you are not zoomed in, zoom in for accuracy.

Move the red arrow so it is exactly where you want it



To “lock it in place touch the next icon in box 2

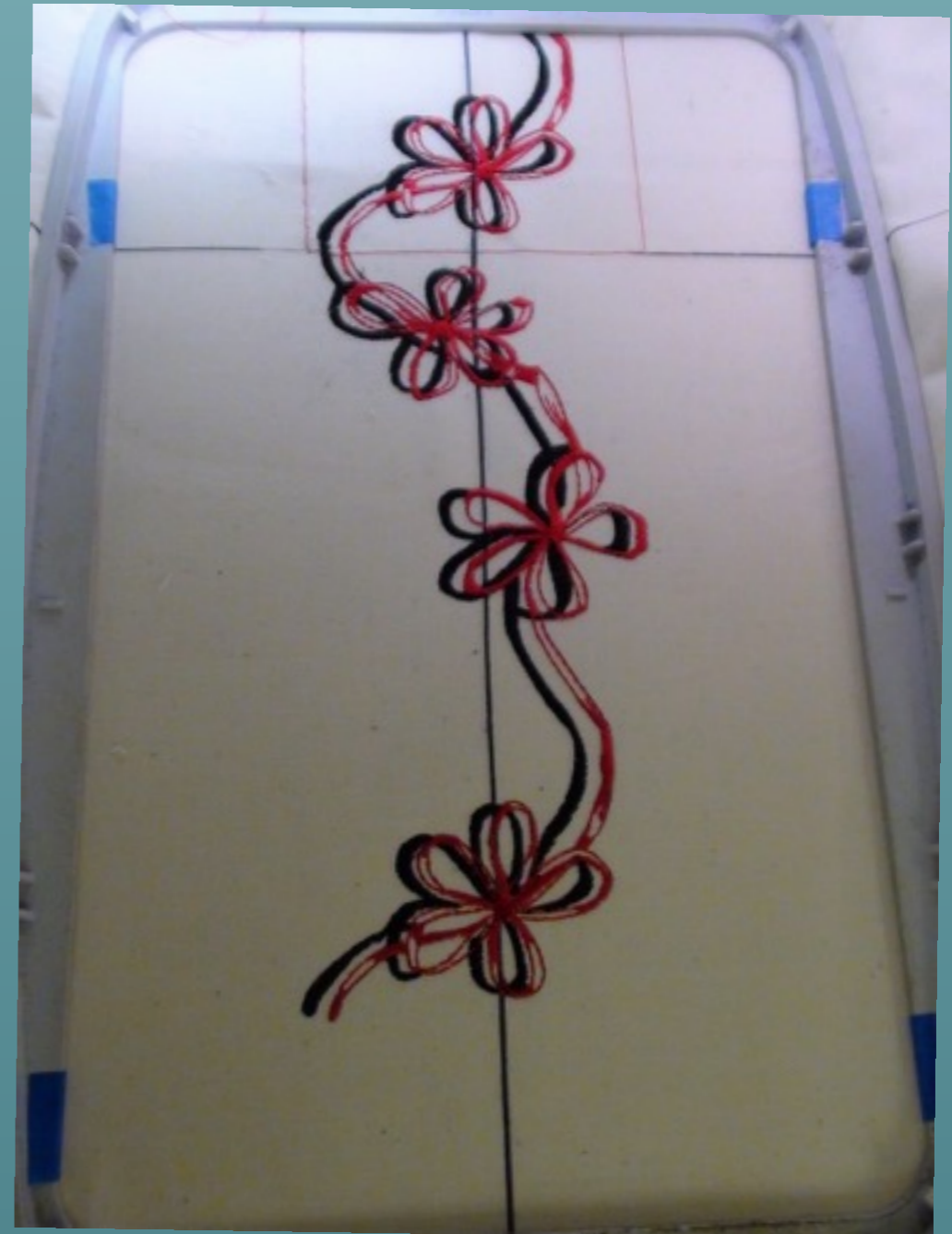
Lower your needle

Check to see if it is lined up

Use the directional arrows to move....this time you only have the option to rotate the design for line up purposes.

Design Placement

Pfaff Perfect Placement





Design Placement

Built in Camera
BabyLock and Brother



Stitch out your
first design

Re-hoop

From the Edit
screen touch the
camera

The hoop will
move as the
camera scans
the contents of
your hoop





Design Placement

Built in Camera
BabyLock and Brother



The screen now shows the scanned image and the design you have called up.

Reposition the design you are going to stitch out using the directional arrows



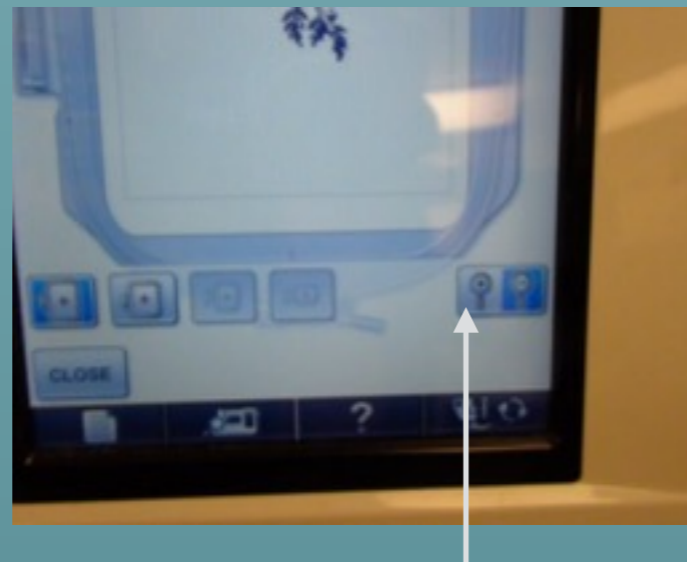


Design Placement

Built in Camera
BabyLock and Brother



To zoom in touch
the hoop under
the camera



Now touch the
magnifier

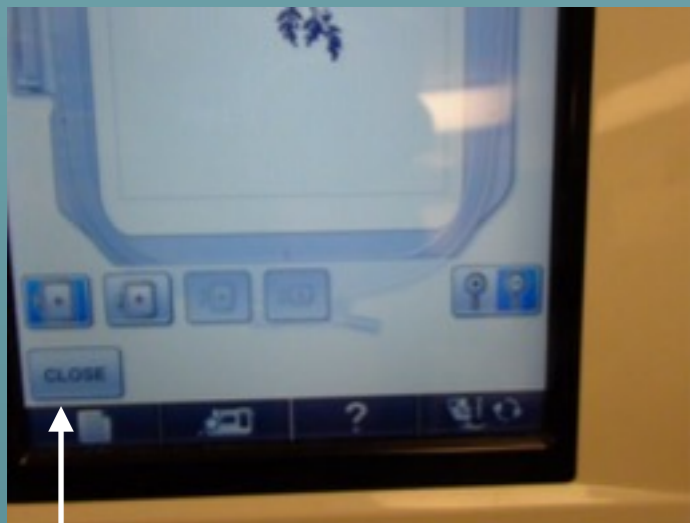


If you are not
happy with the
placement move
the design



Design Placement

Built in Camera
BabyLock and Brother



To move the design click close



Use the arrows to move the design

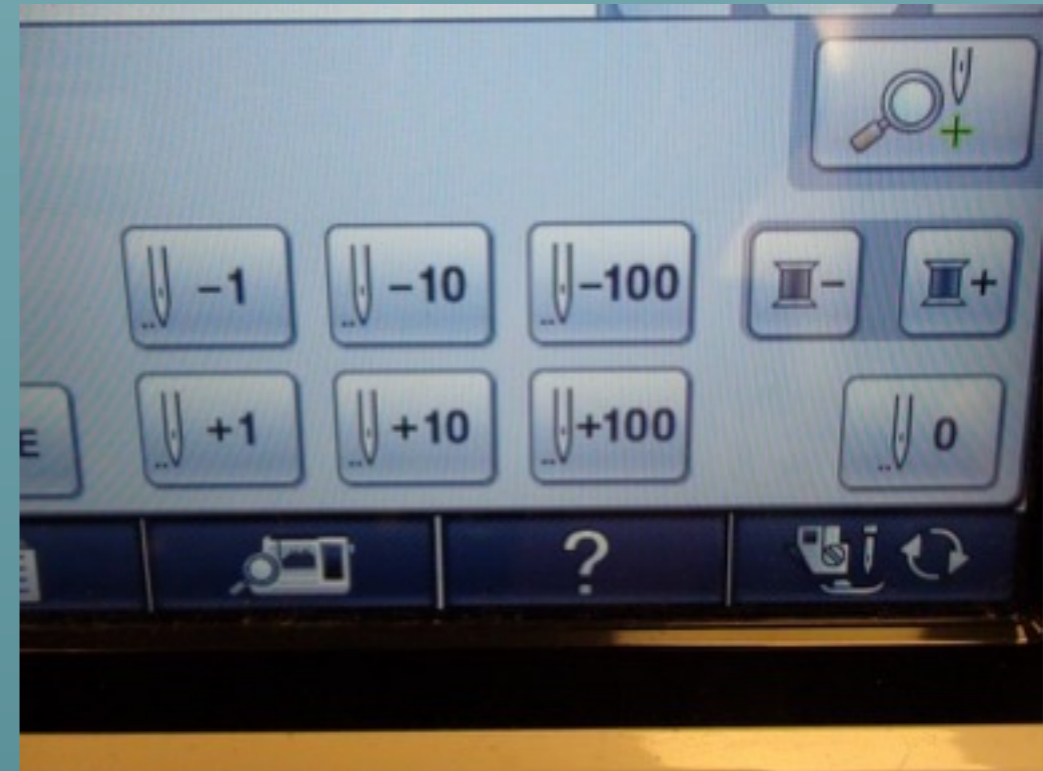
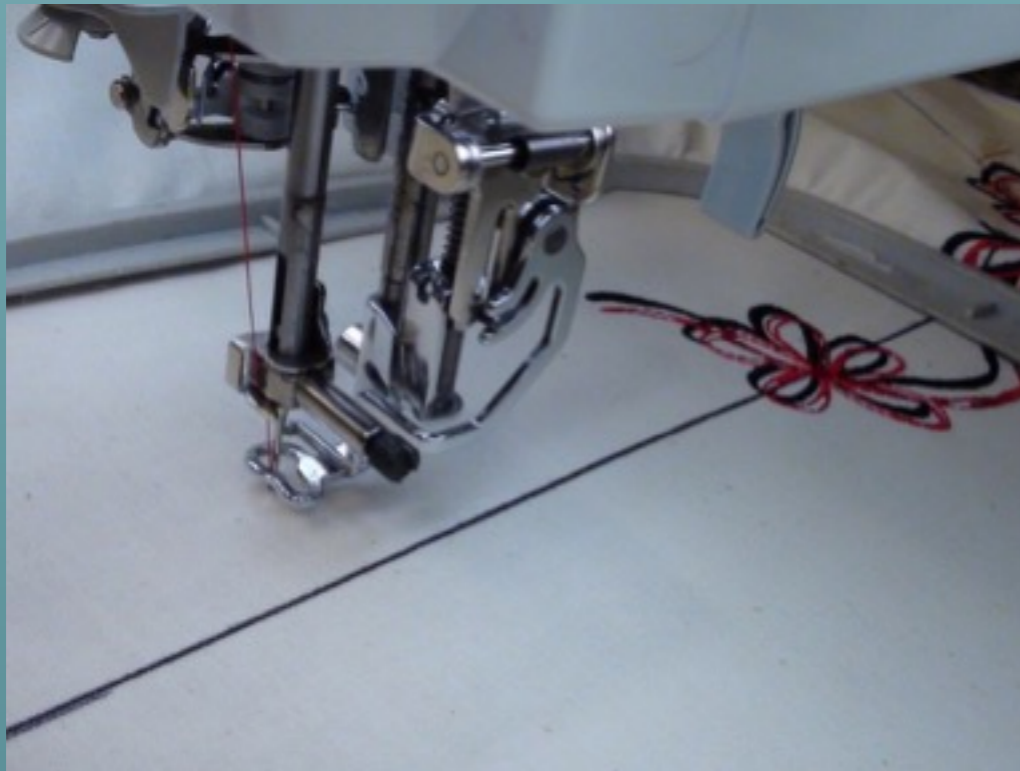


Check by clicking the camera and the magnifier



Design Placement

Built in Camera
BabyLock and Brother



As a final check advance to the line up point
and make sure you like the way it will stitch out



Design Placement

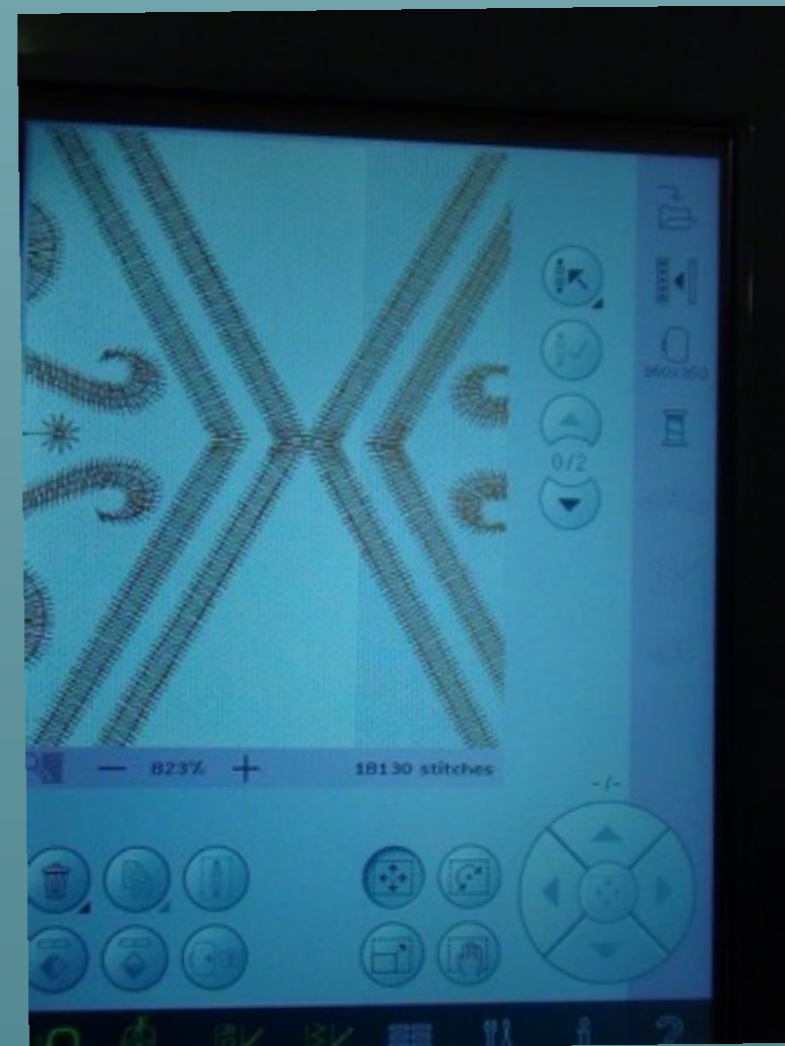
Built in Camera
BabyLock and Brother





350 x 360 hoop

Pfaff and Viking

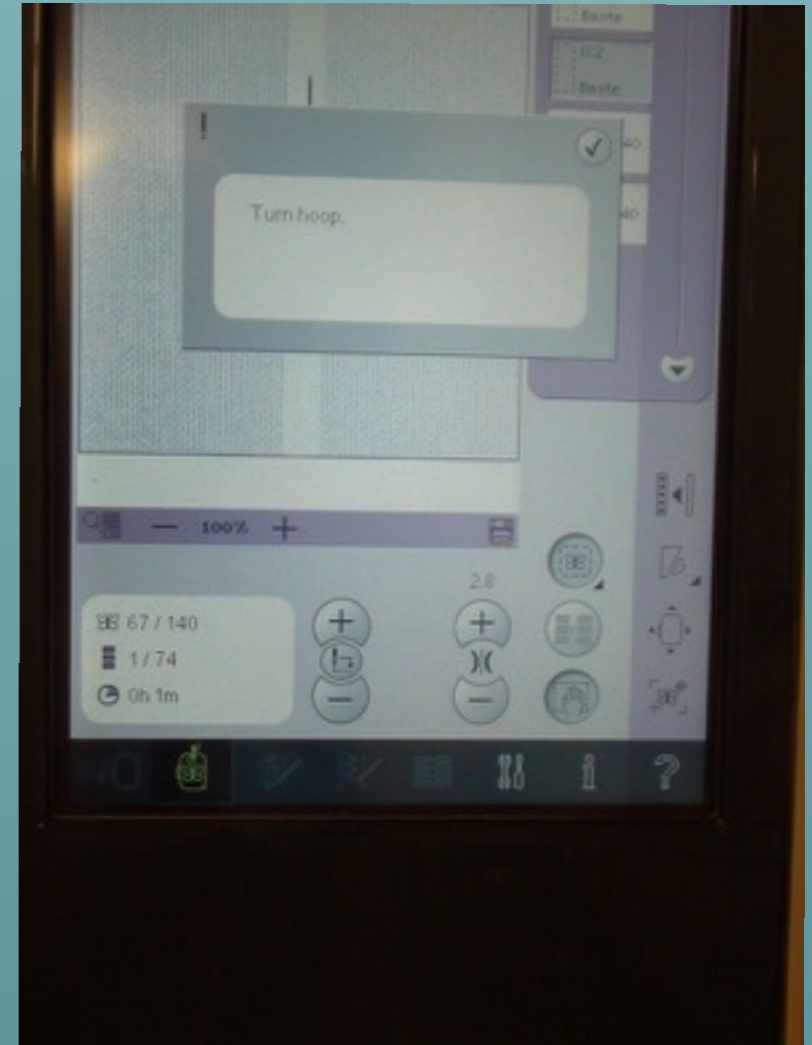
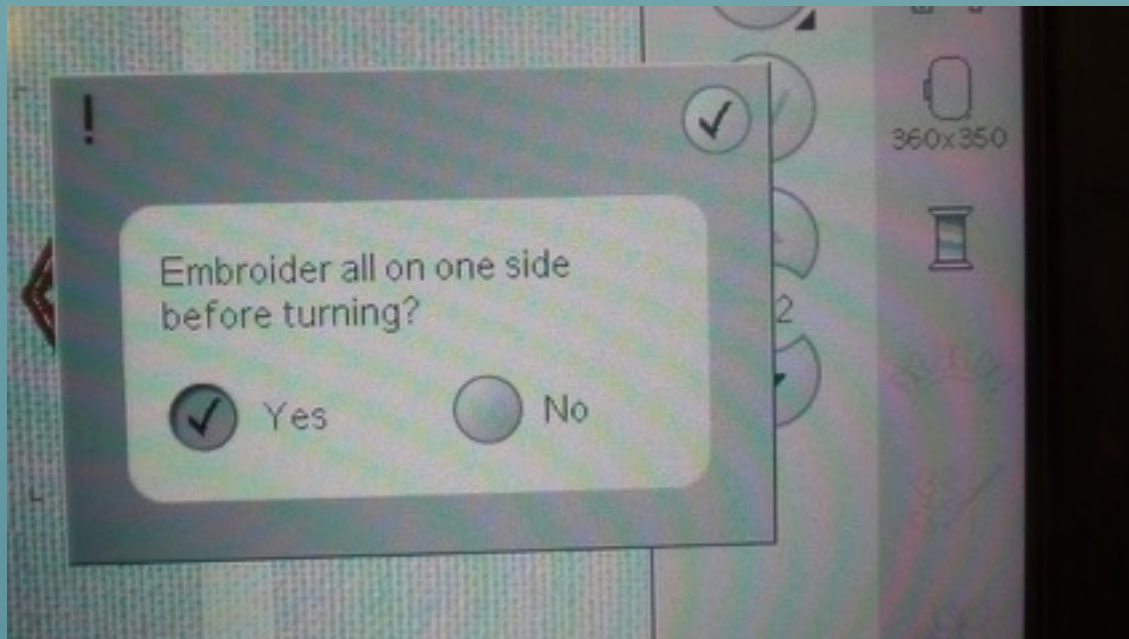


Line up your design exactly how you want it



350 x 360 hoop

Pfaff and Viking



When you begin to stitch you will get this message.
Most of the time my answer is "Yes"

If you choose to baste it will stitch side one
Then a message will come up that says turn hoop.
Turn your hoop and THEN acknowledge the turn hoop message



350 x 360 hoop

Pfaff and Viking



Stitch side one
Turn hoop
and then acknowledge message

Now use your perfect placement
to get everything lined up right



Viking Users: You will use the design positioning function
which is VERY similar to the process on the Pfaff



Attach gathered lace to sweater



Use Stitches that will maintain the stretch of the fabric
Test with a sharp needle and a stretch needle
A Twin needle might work also
Sergers work great on sweaters
Avoid stretching the sweater as you sew





Fabric Cutting Machines



Cricut
Brother ScanNCut
Janome Artistic Edge
Silhouette Cameo

Since I don't have one of these, I am asking for your input, and one of the Premium Members, Dixie is going to help me out here.



Fabric Cutting Machines



Things to consider:

What are its built in capabilities?

Can you put more than one design on the screen at one time?

Can you move, rotate and mirror image on the machine?

Does it come with software or is that an add on purchase?

Is the software compatible with your computer?

Do you already have software you like that would work with this machine?

How easy or difficult will it be to get support?

How easy or difficult will it be to get replacement parts/supplies?

Is there support for the machine you choose?

My thoughts on this are that I would want to purchase one from a place I knew I could have my questions answered, and that offered support and classes...in person or online.



Lace Embroidery



Stabilizer:

Water Soluble

If lining up designs Water Soluble Sticky

Thread:

Regular 40 wt. Embroidery Thread

Cotton 40 wt. Thread

Bobbin can match the top thread or use a lightweight”
thread to make the lace lighter and softer.

Designs:

You can not tell by looking if a design is digitized to be “free standing”

Always read the information that comes with the design to see if it tells you
and/or do a test.

If it is not free standing you can stitch over organza or tulle



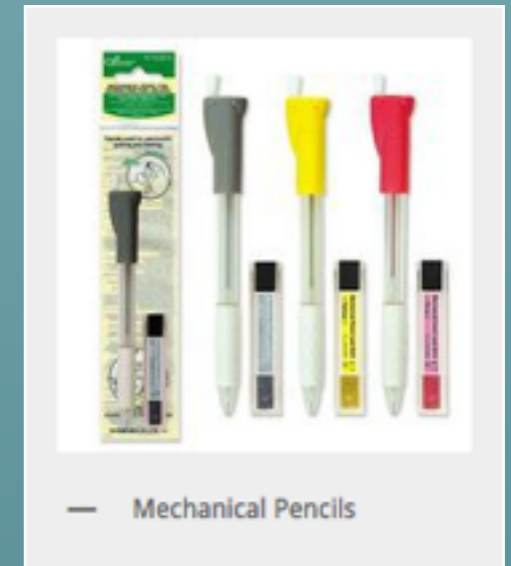
Marking Placement Lines



Tailors Chalk



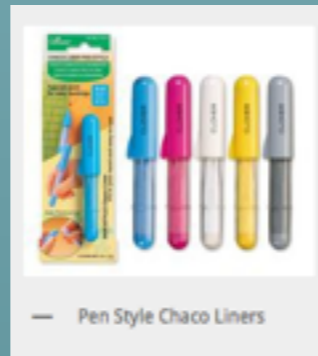
Hera Markers



Marking Pencils...
Mechanical Pencils



Marking Placement Lines



Chalk Markers

Water Soluble Fabric Markers
Air Erasable Fabric Markers



Embroidery Appliqué with Organza



Why make a design into an Appliqué ?

Perfect for adding to area that would be hard to embroider

Takes the fear out of placement

Allows you to experiment with thread colors





Embroidery Appliqué with Organza



ALMOST any embroidery design can be made into an “embroidery appliqué” by stitching the design on organza and no-show mesh stabilizer.



Hoop a total of 3 layers
2 layers of Poly or Nylon Organza
1 layer of Poly or Nylon No-Show Mesh
Stabilizer between organza
Stitch out design
Remove Excess Stabilizer with heat tool





Embroidery Appliqué with Organza



Use this method for “in the hoop” projects:

Hoop your organza and stabilizer

Stitch the placement stitches for the mask fabric

Place the appliqué fabric on the hooped organza and no show mesh

Tack down the appliqué fabric

Trim away the excess fabric

Stitch embellishments

Stitch the placement stitches

for the mask baking fabric

Put backing fabric in place

Tack down the appliqué fabric

Trim away the excess fabric

Do the satin stitch outline

Use the heat tool to remove excess

No-Show Mesh and Organza





Embroidery Appliqué with Organza



If the stitching in your design will not completely cover the organza, be sure to choose a color of organza that will complement your design





Thread Types and Weights



Polyester Embroidery Thread:

Embroidery

Washes well

Melts with heat

(not good for free standing embroidery technique)

Can bleach (test first)

Can be used in needle and bobbin

Not strong enough for construction

40 weight most common

New threads becoming popular:

60 or 80 weight

Rayon Embroidery Thread:

Embroidery

Do not bleach

Does NOT melt with heat

(recommended for free standing embroidery technique)

Relaxes after stitching giving a

more filled in look to design

Not strong enough for construction

40 weight most common

Not sure if these are coming in:

60 or 80 weight



Thread Types and Weights



Monofilament (Invisible):

Polyester and Nylon

Great for appliqué and quilting

Some machines are finicky about
this thread

Can be difficult to use in the bobbin and
needle at the same time

Heirloom Thread:

Fine cotton

80 weight

Ideal for sheer and delicately
woven fabric

Limited Color Choices

Cotton:

Can be used for embroidery,
construction and quilting.

Silk Thread:

Can be used for embroidery,
construction and quilting.



Thread Types and Weights



Construction:

Silk Finish Mercerized Cotton
Cotton covered polyester
Sergers thread

Top Stitch
Sergers thread
AND MORE

Hint: It has often been said that for construction, piecing, and quilting you should match your thread type to your fabric type. So in essence the thread will not be stronger than the fabric and it will not cut through the fabric.



I am new to Facebook. Do you have a place where you put information?

Virtual Sewing Guild
Margaret Moorehead Sewing

Can I share your newsletters with my friends?

Please don't share the Premium Membership and Webinar Membership newsletters. Share all others.....or have them go to VirtualSewingGuild.net

When does my membership expire?

The End of February 2016

I noticed you were using a glue gun in the Terial Magic Class. Do you use a special glue when working on fabric?

I did not, but....there is such a thing and I am going to get one and try it out!

Sandra S



This small wall hanging is from one of our previous projects at Virtual Sewing Guild.

It was made as a donation for a local nursing home bazaar.

Sandra S



This design is from Kreation's by Kara,

It was made into a Christmas pillow for the nursing home bazaar also.

Sandra S



We had a new baby in the family this summer. Our second great granddaughter. I made her quilt from Jenny Haskins' Creative Expressions Magazine Issue #23. Called The Whimsical Bunny Cot Quilt.

The background was quilted first, then the flowers, butterflies, bunnies and leaves were appliquéd to it.

The bunny tails and flower centers are made of fur for a fuzzy, 3D look.

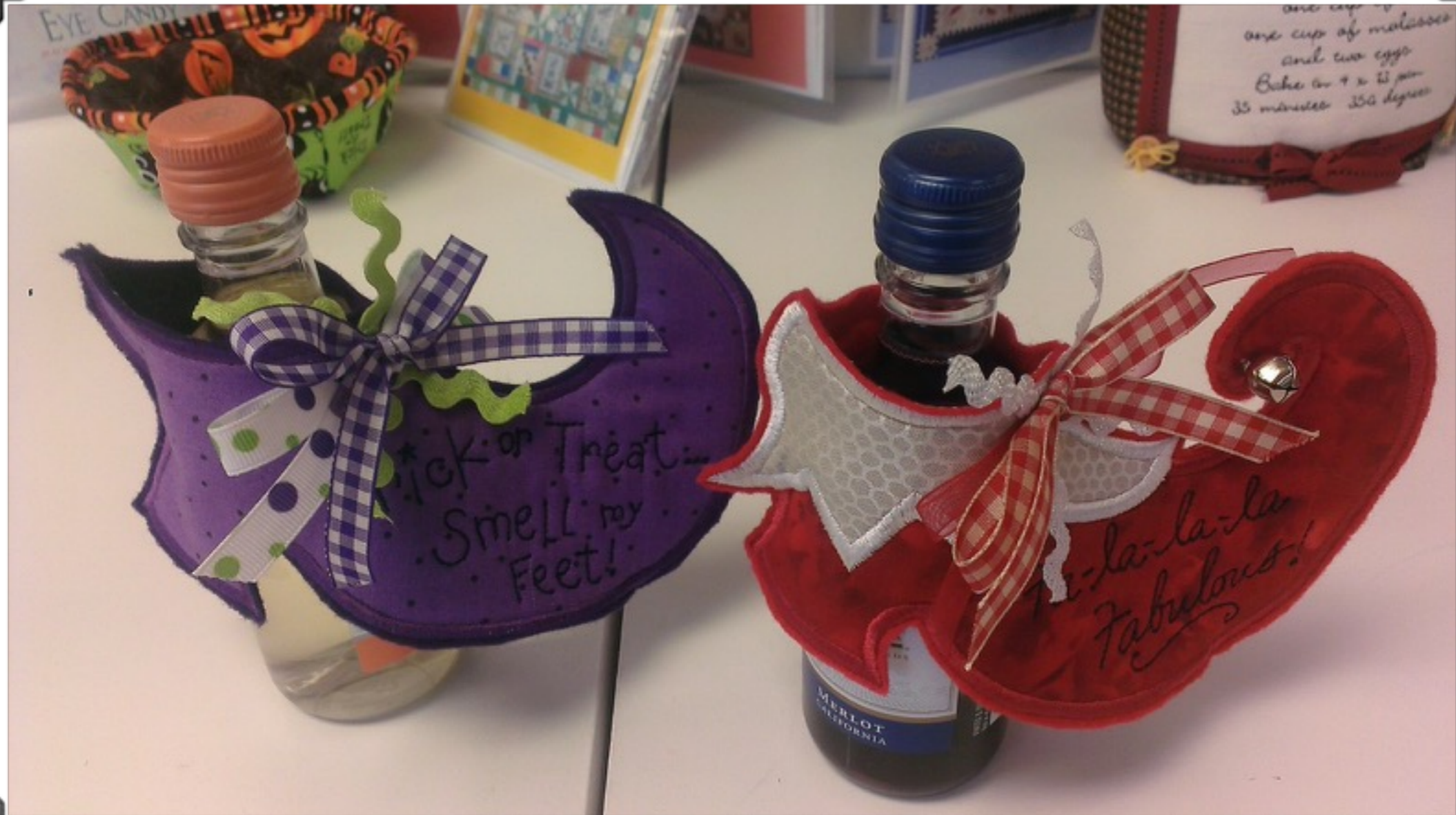
The ruffle is added last and the seam is covered and sewn flat to the back of the quilt.

Dixie



Quick and easy holiday projects:
No Peeking Gift Tags - KimberBell - They have a large and small size. The large size could accommodate tickets or a letter. The small size fits gift cards.

Dixie



Witch and Elf Shoes - Kimberbell - These are supposed to have a stack of Oreo cookies in a plastic package for make pretend stockings. Thought I would give them an adult twist. Doesn't fit quite as nice but might come in handy during the holidays

Dixie



Christmas Tree and Gift Card Holders - Pickle Pie -

I would have never done the Christmas Tree from the picture on the package, but was in Hobby Lobby and saw the sewing button package in the scrapbooking section.

Thought it would help dress up the tree. Sometimes you find really cute things in the scrapbooking area that can be used for sewing.

Dixie



Monkey Hats
Urban Threads
My Granddaughter needed
them for her baby dolls!



Dixie



Fantasia Collection 1 & 2 - Janet Sansom - My block of the month quilt top that I've been teaching. It is pieced but it hasn't been to the quilter yet. The pillow shams are a generic pattern from the internet. I modified it to have three panels in the center. I couldn't get a picture to show it very well, but the center panel uses a twin needle stitch that is of course a serpentine stitch. You continue to inspire us in all of our projects.

Betsy

This collar is from Jenny Haskins Creative Expressions Magazine, Issue 11. It is one that Margaret has taught throughout the US. It is made out of black linen and uses two designs from Jenny's Antique Lace Cutwork CD using Jenny's metallic thread. I created the lace trim using a Zundt Embroidery Lace design. I serged the edges of the collar and then topstitched the trim along the edge.



Betsy



Margaret, I just love this project. As you know, I have made chenille rugs before, but I have always used flannel....never regular cotton for fabric. What a great idea to use appliqués!!

I chose fabrics to go with Margaret's Bedroom Bouquet Ensemble Project that we did a few year's ago for my Appliqué Chenille Rug. The ensemble decorates our Guest Room and I needed a rug for that room so this was the perfect answer.

Betsy



For those who may not be familiar with the Bedroom Bouquet Ensemble, I have included a couple of pictures of the items that make up my ensemble. I am so excited to finally have a rug that matches so perfectly.



Betsy



This wall hanging is called Show Your Colors. The pattern is by Susan Cleveland. It is totally machine stitched and features many of Susan's techniques including her mini piping (the yellow surrounding the flag), prairie points with decorative stitching (the stars) similar to what we have done with Margaret, quilted stars in the border, and machine stitched binding. I love this wall hanging and it hangs in our enclosed porch all year round.

Betsy



These photos are of two paper pieced checkbook covers that I made to replace ones I had made several years ago...one for my sister and one for me. The pattern is Checks N Balances from Prairie Place Patterns by Lynn Harkins. All of the fabrics are batiks except the black background is Kona Cotton.



Betsy



A banner I made for our daughter and son-in-law's house in Orleans on Cape Cod. The banner is a 2014 Row by Row pattern of Nauset Beach and Lighthouse by Murray's Quilt Shop in Orleans. For those not familiar with the Cape, Nauset Beach and Light are located in Orleans which made this a very appropriate wall hanging for their house.

Helen



I made it for a friend's granddaughter when she got married
The longer I worked on it the more I changed my mind.
Lot's of hard work in it.

Helen



Hummel Wall Hanging
or
Quilt

Helen

Christmas Wall
Hanging



Helen

Christmas Wall
Hanging



Helen

One of the Membership projects



Helen

Same project different colors and embroidery designs.



Simon's Folly - I got a big blue ribbon at the County Fair and recognition at the State Fair. When I make a quilt I always make curtains and wall hanging for my quilt rack to match. . Jenny wrote an article and had pictures in one of her magazines.



Helen

Kathy A

Quilt for Baby Grace. The pattern is called Ashley's Journey by Pie Plate Patterns. The quilt is large enough to go from baby to "play house" age and beyond.





Kathy A

Churn Dash king size quilt.
Some assembly required.-:)

Judy W



Moulin Rouge:

This quilt took 2 years to finish. It hung in the Colorado Capital Building and out of 500 quilts, it took 3rd place, Viewers Choice.

I am very proud of this quilt.

It was quite a challenge.

It is done in Silk Dupioni and Velveteen.

It was quilted by Carol Willey who is a wonderful quilter here in Castle Rock Co.

The Design is by Jenny Haskins. There is 25 spools of thread in this quilt.



Judy W



Victorian Sue

This is my original design. It is 3 dimension. Some hand and some machine stitching. When I was young, My Aunt, who was an Artist, would draw the doll and I would have to make the paper clothes. I thought, why couldn't I make the same thing in fabric. I have the patterns for each of these blocks. It started out as a doll and I layered the fabrics, starting with the underwear and then clothing on top. The bride even has a garter. They were fun to do.

I have taken Martha Pullens licensing 3 times and teach private classes in heirloom sewing. I had a Christening Dress in the Sew Beautiful Magazine, that Martha appraised at \$8,000.

I am a Jenny Haskins Accredited Teacher also.

Judy W



Judy W



“Cut Work Quilt”

I found a photo in a magazine and I had the Viking Cutwork Card, so I combined the designs and made the quilt. I did it the old fashioned cutwork way and as soon as I finished the quilt, Viking came out with the cutwork needles. Go figure!!!

Judy W



Judy W



The Crazy Patch was done in Silk Dupioni and Vintage Fabrics, Men's Ties.
The Design is by Molly Mine of Secrets Of.

Judy W



The one I call Labor of Love,

This quilt started out as The Federation Quilt by Jenny Haskins. I worked on it off and on for about 6 years. I would work on it and then put it away. I finally got all the blocks done that I wanted and put it together. We have a Bed and Breakfast in Golden Co and when I was showing a guest, (whom had bought 3 of my quilts before) said she just had to have it. She is an interior decorator and felt it was a work of Art. I still have to bind it and I think I am going to bind it with a scalloped border. What do you think? I almost hate to let it go. I have gotten attached to it. Funny, Huh?





Judy W

Pictogram

This quilt is by Judy Nowicki. I have made 4 of these. They are so easy and fun to do. It is Appliqué and Embroidery.



Margaret Moorehead's

Virtual Sewing Guild

*A big thank you to all of
you for submitting such
great questions and show
and tell....I am truly
inspired by you!*

