

VIRTUAL
SEWING GUILD



Jenny
Haskins
DESIGNS
..for elegant embroidery

Part 1



Jenny's Technique Quilt

Jenny Haskins Technique Quilt Part 1

Margaret Moorhead's

VIRTUAL
SEWING GUILD



This is *Jenny's Technique Quilt* with the creative focus being on the following techniques whilst incorporating quilting techniques on a non-threatening small scale.

- Appliqué using decorative stitching
- Basic machine Embroidery
- Cheating crazy patchwork
- Cheating embroidered Trapunto
- Cheating patchwork
- Decorative Stitching
- Echo quilting
- Embroidered Appliqué
- Fabric weaving
- Freehand Stipple Quilting
- Fussy cutting
- Jenny's Embroidered Decoupage Technique
- Stand Alone Lace Embroidery
- Broderie Purse (raw edge appliqué)
- Faux Piped Prairie Points
- Stand Alone Embroidery
- Stitch Weaving
- Tassel making by machine
- Template piecing
- Thread Painting
- Twin-needle meandering
- Twin-needle Grid Quilting
- Outline Quilting
- Quilt as you go (quilting each section of the quilt before piecing)



Supply List

- Embroidery/sewing machine and accessories
- Machine feet:
 - open-toe, embroidery
 - 1/4in patchwork/quilting
 - free motion foot
 - beading/cording (optional)
- Machine needles:
 - Microtex-80
 - twin-needle (widest your machine will take) we used a 6mm
- Designs for project (included in this class)
- Stabilizers
 - Water Soluble Stabilizer
 - Tearaway Stabilizer
- Threads
 - Rayon threads in colors that match the floral fabric – we chose, pinks, purples and greens along with cream and a soft metallic gold
 - Construction thread for needle and bobbin
 - Invisible/monofilament thread
 - Fine pre wound bobbins, or wind your own with fine bobbin weight thread
 - Machine bobbins wound with matching thread to that of 3D flowers
- Cutting Tools
 - Rotary Cutter, self-healing cutting mat and quilting ruler
 - Small sharp scissors for appliqué
 - Cutting shears
 - Paper Scissors
- Quilting pins (regular pins will work)
- Fabric Marking Pen
- Heat Cutting Tool for Embroidered Decoupage and 3D Flowers
- Tile to protect your surface when using the Heat Cutting Tool
- Fabric Glue
- Cardboard for making template of continuous border and fan
- General Sewing Supplies



Supply List Continued

- Optional Items
 - Jenny's Magic Tassel Maker by Machine (optional)
 - Heat-activated crystals
 - Heat Setting Tool
 - Quilt basting spray
 - Cording foot

Fabrics

- 1 1/2 yd x 45in **Solid fabric**-blocks, narrow border (includes extra for testing)
- 1 1/2yd x 45in **floral fabric** – wide border, appliqué, fussy-cutting, piped prairie points
- 1yd x 45in **spotted fabric** – block borders and sashing
- 1/2yd x 45in **striped fabric** for binding (cut on the cross grain) and piped prairie points
- 1 1/2yd x 45in **backing fabric**
- 1yd x 45in **Cream/white nylon or polyester organza** for *Embroidered Decoupage* ®
- 1/2yd x 44in **light pink nylon or polyester organza** for one layer of the 6 pink 3D flowers
- 1/2yd x 44in **dark pink nylon or polyester organza** for one layer of the 6 pink 3D flowers
- 1/2yd x 44in **cream nylon or polyester organza** for both layers of the 2 cream 3D embroidered flowers
- **Other fabrics:** Use coordinating fabrics from your stash for the embellishments of your blocks, using the photo of the quilt blocks as a guide to fabrics needed...floral, spotted, stripes and others used in the blocks.

Batting, Fusible Web, Interfacing and Krinkle Magic

- 1yd x 36in **Double-sided fusible web**
- Enough for the backs of six 10" blocks **Sheer Magic Plus** or **fusible knit interfacing**
- 2 yds x 44" **Quilt Magic light weight fusible batting** or **Pellon 987F**
- 1 yd x 36in **Krinkle Magic/Texture Magic** for all the 3D flowers

Finished size of quilt 30 1/2in x 47 1/2in

Finished size of blocks 7in square

Finished size of floral wide border 3 1/2in

Finished size of cream border 2 1/2in

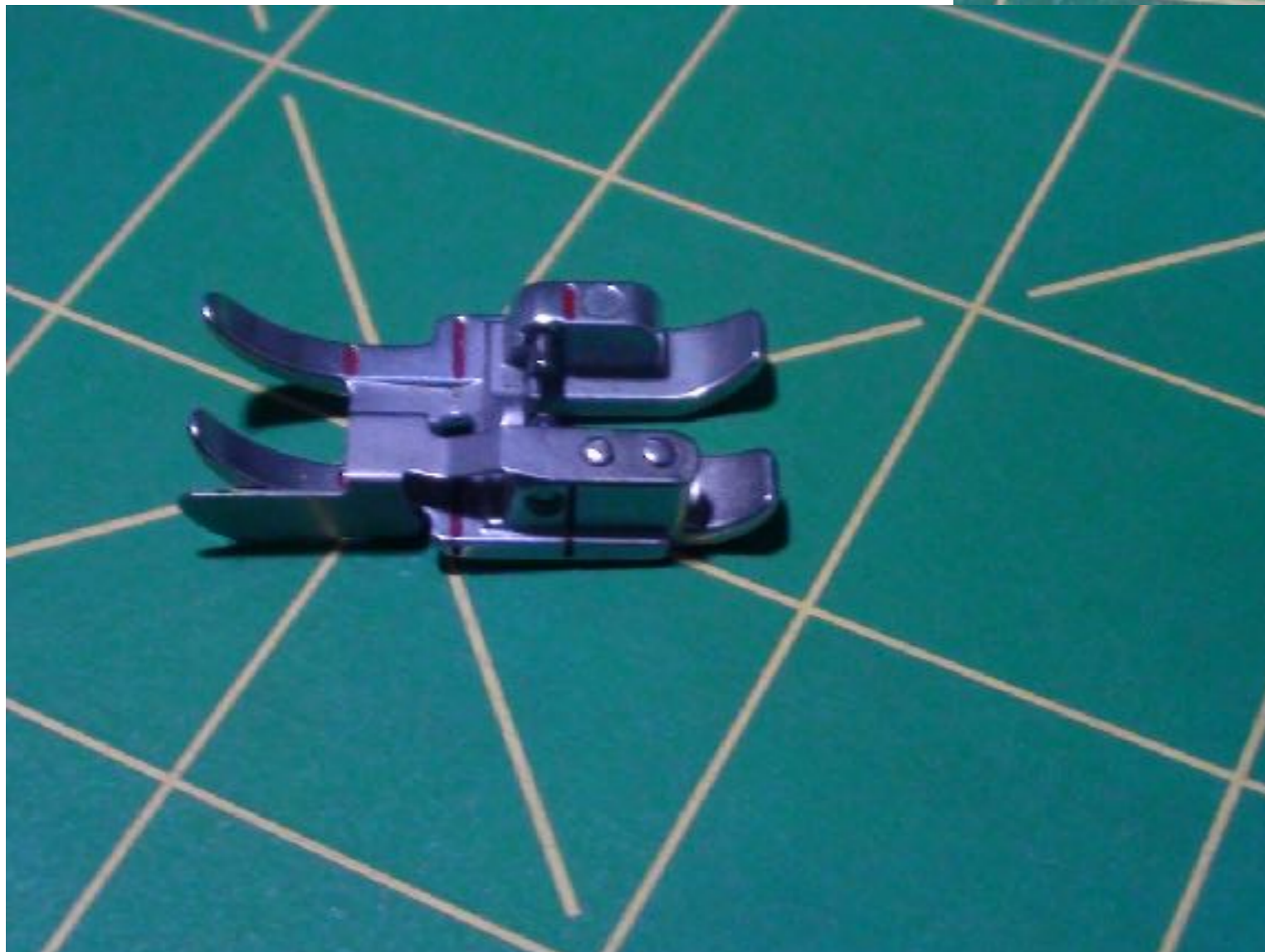
Finished size of cream border cornerstones 2 1/2in square

Finished size of narrow sashing and borders 1 1/2in

Open Toe Foot



Quarter Inch/Patchwork Foot

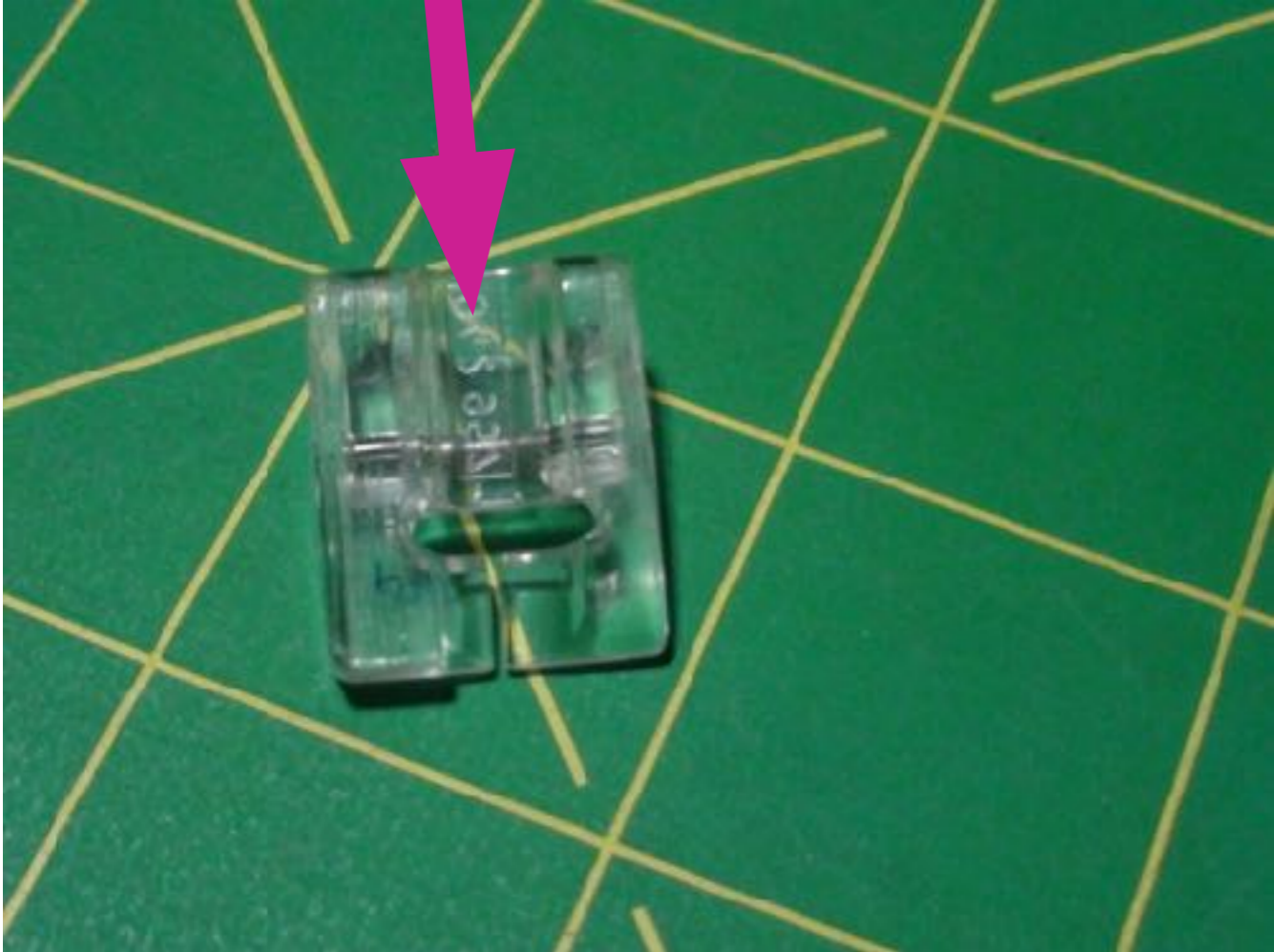
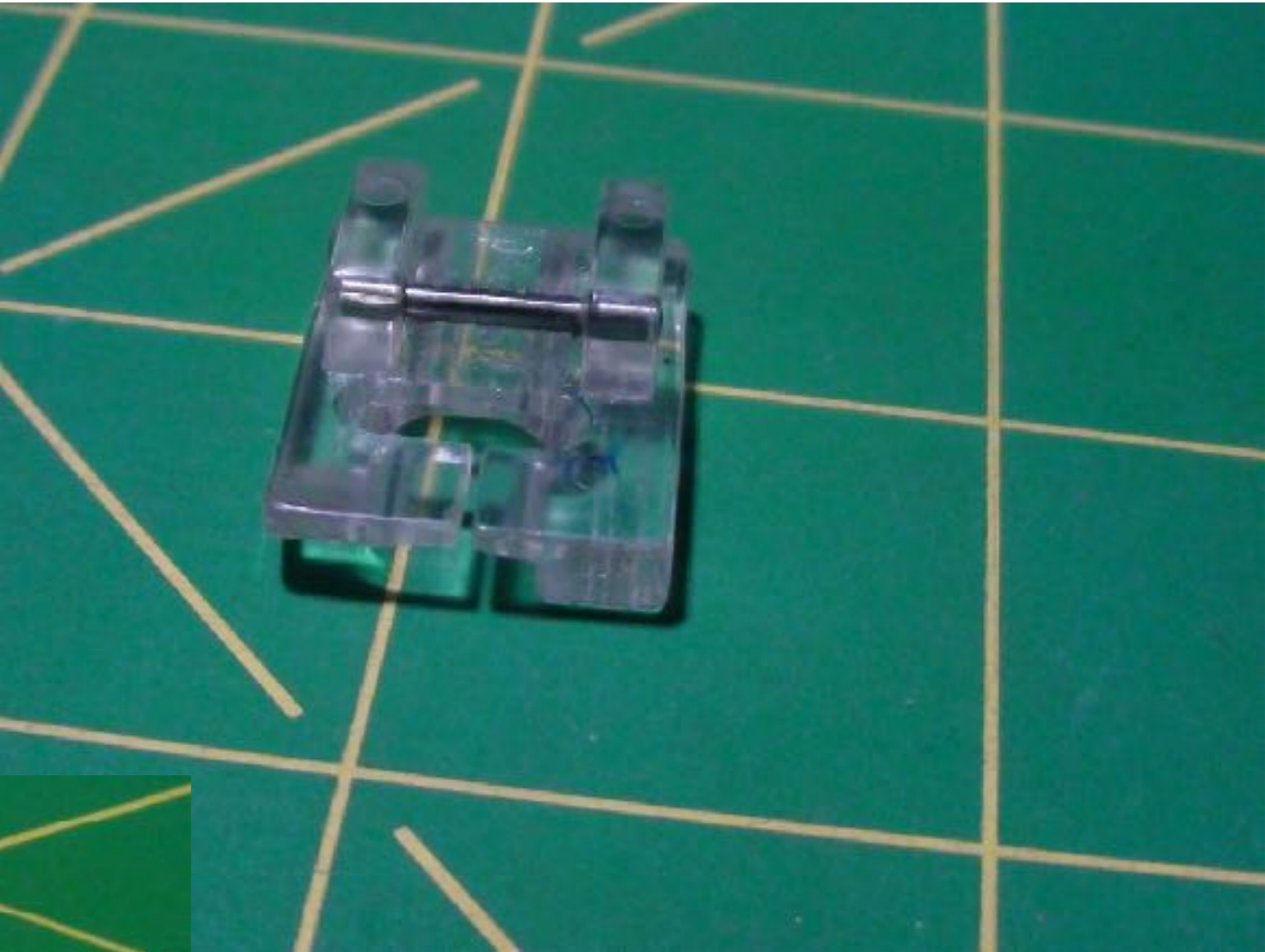


Free Motion Foot

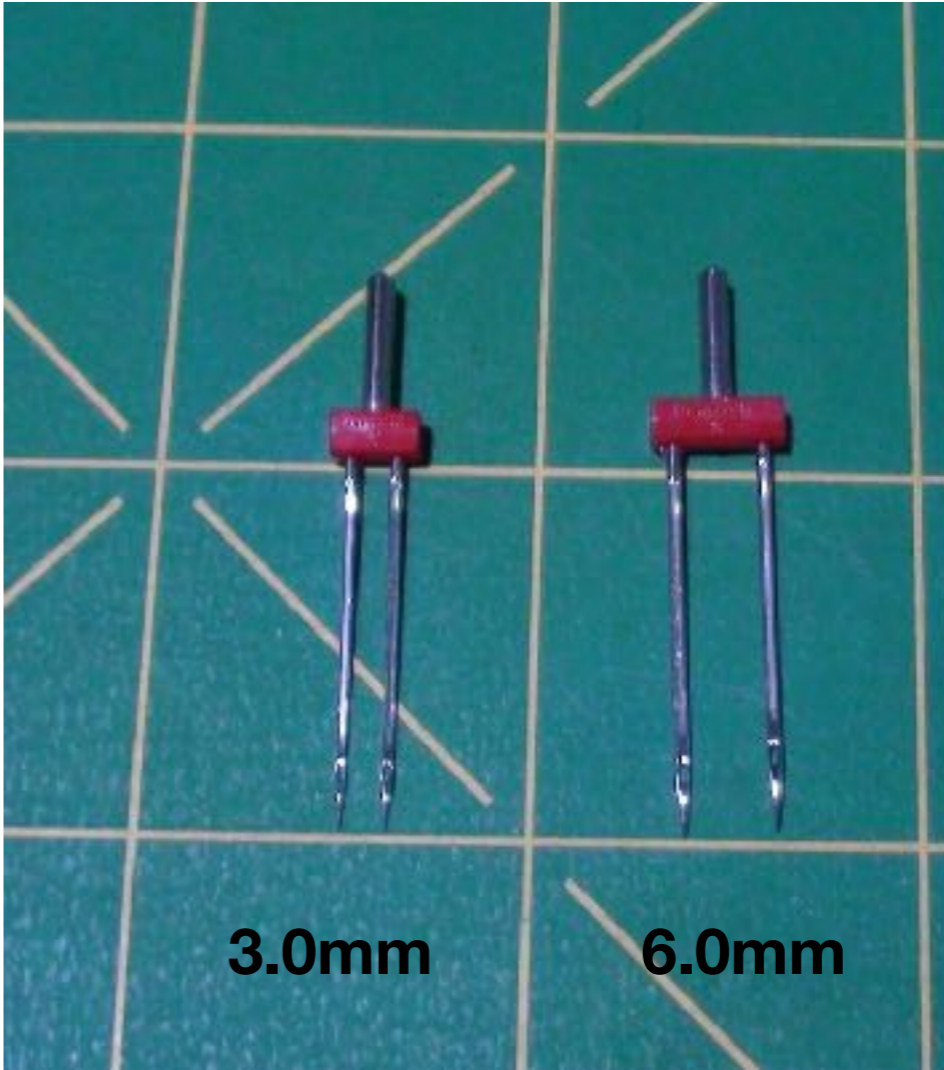


Cording/Beading Foot

Optional



Needles



Embroidery Designs



Stabilizers

Tear Away
Wash Away



Threads



Construction Thread



Monofilament/Invisible Thread



Fine Pre-wound Bobbin or you can wind your own



3D Embroidered Flowers



Rotary Cutter Mat Ruler



Scissors

**Paper
Shears
Small Sharp Scissors for Applique'**



Pins



Fabric Marking Pen



**Heat Cutting Tool and tile to
Protect your work surface**

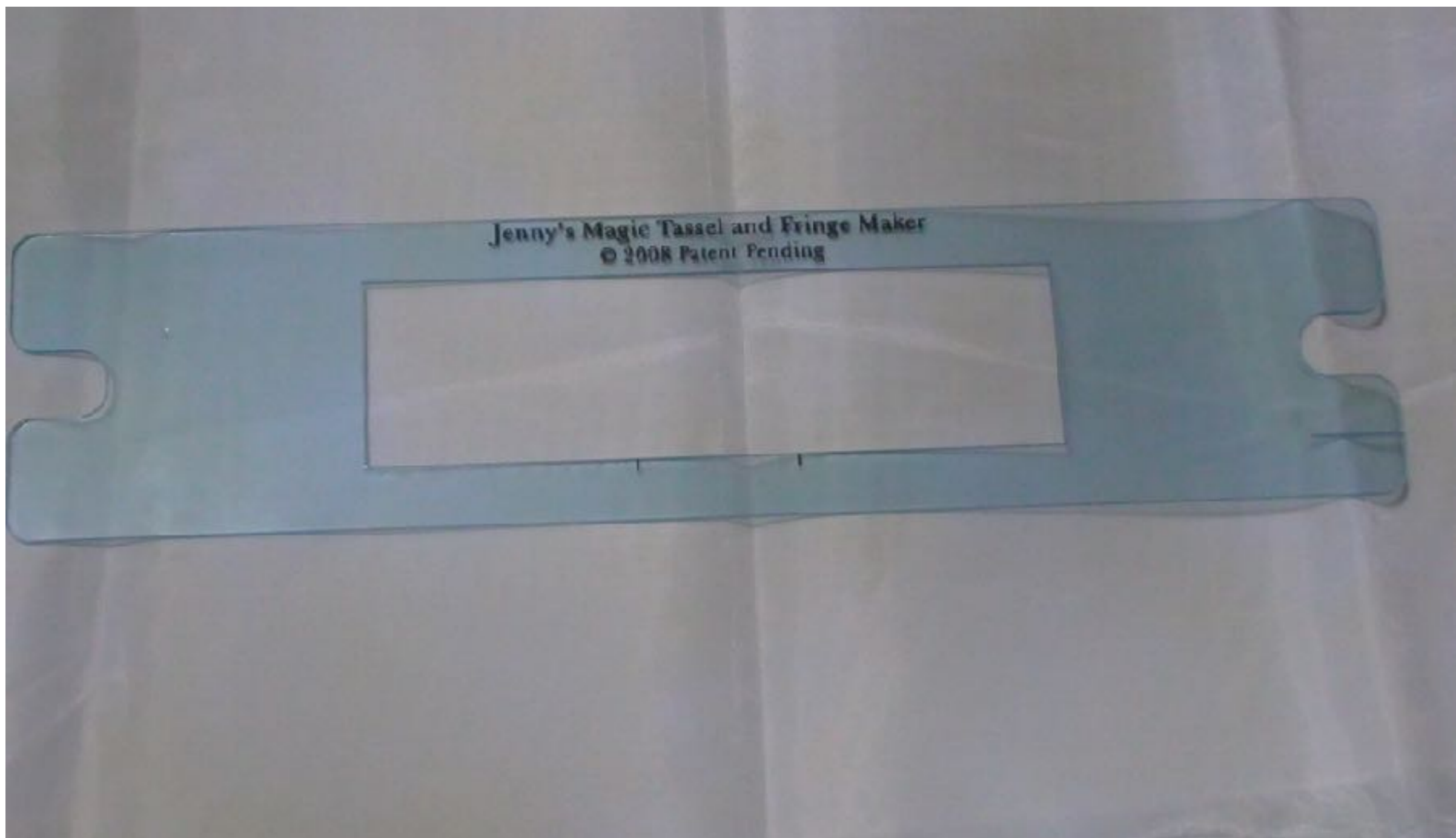


Permanent Fabric Glue



Cardboard
General Sewing Supplies

Optional Tassel Maker



**Optional
Heat Activated Crystals
and Heat Setting Tool**





- 1 1/2 yd x 45in **Solid fabric**-blocks, narrow border (includes extra for testing)
- 1 1/2yd x 45in **floral fabric** – wide border, appliqué, fussy-cutting, piped prairie points
- 1yd x 45in **spotted fabric** – block borders and sashing
- 1/2yd x 45in **striped fabric** for binding (cut on the cross grain) and piped prairie points
- 1 1/2yd x 45in **backing fabric**
-



- 1yd x 45in **Cream/white nylon or polyester organza** for *Embroidered Decoupage* ®



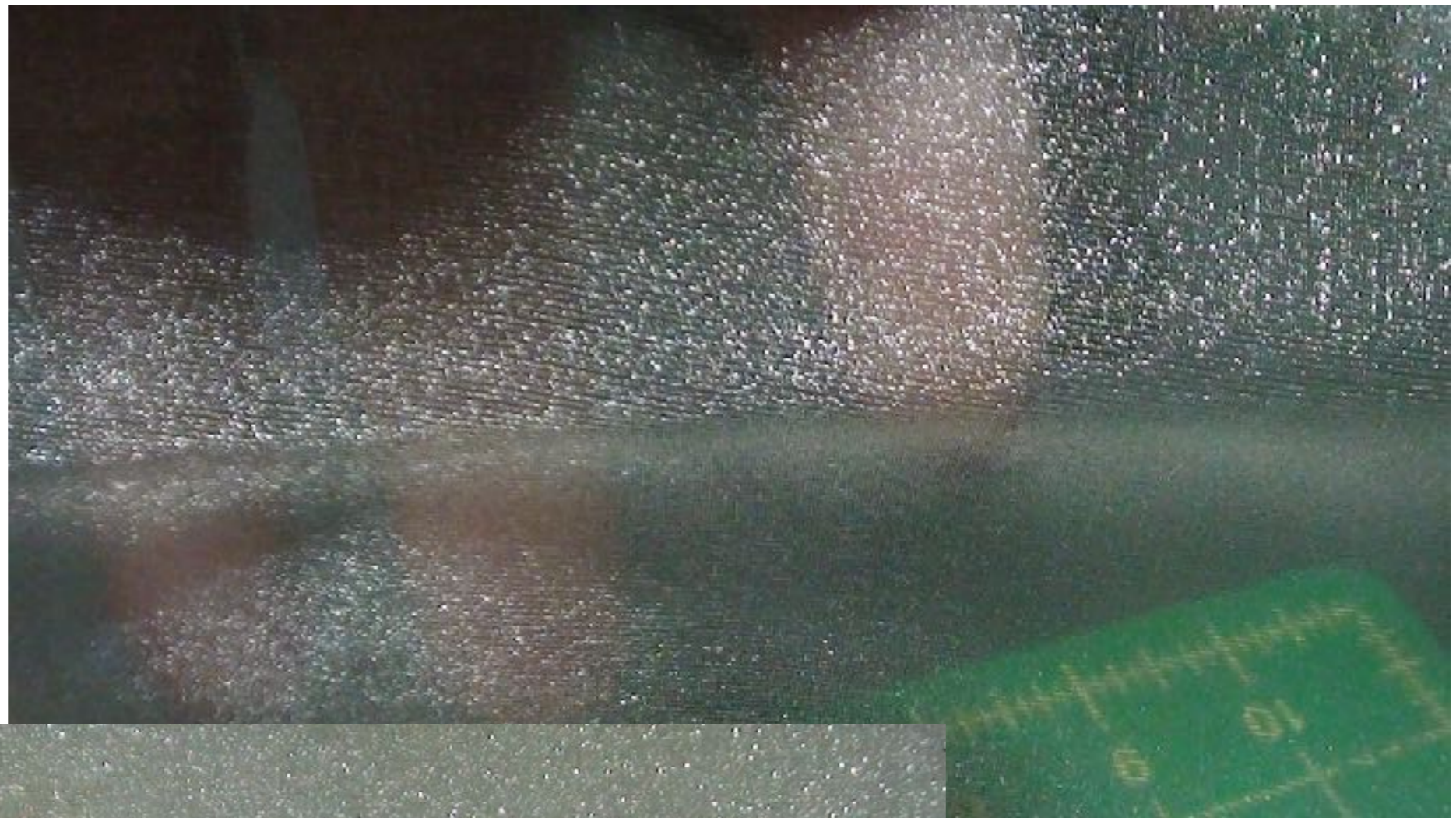


**1/2yd x 44" each of 2 colors
Nylon or Poly Organza**

**You will be making 6 flowers
Each flower has 2 layers**

**You can use a different shade of organza for each flower
Or the same shade for each layer**





Nylon or Poly Organza for 2 additional flowers

**Each flower has 2 layers and in Jenny's Quilt
she used the same color for both layers**

Other small pieces of fabric from your stash



Double sided fusible web

Wonder Under



**Fusible Knit Interfacing or
Jenny Haskins Sheer
Magic Plus**

Enough for 6 blocks



2yds x 44in

Pellon 987F



Jenny's Quilt Magic



1yd x 35in























Let's do a bit of testing!

Twin Needle Quilting – is simply put, quilting using a twin needle, resulting in a double line of parallel stitching.

Start with a 10” square of fabric that has batting fused to the back of it.

Use the photo as a guide to mark intersecting meandering lines on the 10in square block.

Select the widest twin-needle size your machine will take (up to 6mm wide). If you have a 9mm maximum stitch width then you should be able to use a 6mm wide twin needle and if you have a 7mm maximum stitch width then you can use a 4mm wide twin needle.

Use two spools of cream thread in the needles and a fine thread in the bobbin, open-toe foot and straight stitch. Make sure you bring up the bobbin thread before starting to sew. Hold the needle threads and allow the needles to engage with the bobbin. When the needles are raised pull one of the threads to bring up the bobbin thread. Hold the bobbin thread and tie off the stitching and start stitching slowly. Remember to also tie-off at the end of the rows of stitching.

Center the foot over the marked meandering lines and sew over all lines, crossing over already stitched lines as required.

Change to a single needle. Use cream rayon thread in the single needle, straight stitch, free motion foot, (lower the feed dogs), to stipple quilt in between some areas of the twin-needle quilting. Use the photo as a guide.

Use the photo as a guide to position single lace flowers (JTQ06) on the block secured in place with glue.



Let's do a bit of testing!

Twin Needle Quilting – is simply put, quilting using a twin needle, resulting in a double line of parallel stitching.

Start with a 10" square of fabric that has batting fused to the back of it.

Use your quilting ruler and fabric-marking pen, to mark a 1 1/2in diagonal grid on the 10in square.

Select the widest twin-needle size your machine will take (up to 6mm wide). If you have a 9mm maximum stitch width then you should be able to use a 6mm wide twin needle and if you have a 7mm maximum stitch width then you can use a 4mm wide twin needle.

Use two spools of cream thread in the needles and a fine thread in the bobbin, open-toe foot and straight stitch. Make sure you bring up the bobbin thread before starting to sew. Hold the needle threads and allow the needles to engage with the bobbin. When the needles are raised pull one of the threads to bring up the bobbin thread. Hold the bobbin thread and tie off the stitching and then start stitching slowly. Remember to also tie-off at the end of the rows of stitching.

Center the foot over the marked lines and sew over all lines, crossing over already stitched lines as required to create the grid.

Change to a single needle. Use cream rayon thread in the single needle, straight stitch, free motion foot, (lower the feed dogs), to stipple quilt in between some areas of the twin-needle quilting. Use the photo as a guide.



At each intersection stitch satin a stitch ball  using the single pattern button

Use a free motion foot, straight stitch and cream rayon thread to stipple quilt the center of selected squares on point, using the photo as a guide.

Single lace flowers, JTQ06 are centered in some of the squares-on-point; use the photo as a guide to place the lace flowers then glue in place.

Testing the Seam Allowance



Now test the seam allowance. Since our fabric is fused with batting and we are going to be stitching the fabrics with the batting together with a traditional seam, now is the time to see what that seam is going to be like.

Stitch together two pieces of fabric that have the batting fused to the back of them using a 1/4" seam allowance.

The seams will be "bulkier" than normal, but remember to use the fairly thin batting for the best results.

Part 1 Assignment

- Print out Part 1 Assignment Sheet
- Print out Part 1 Instructions
- Print out Fabric Tracking Worksheet
- Gather Supplies
- Create a block with twin needle meandering lines
- Create a block with twin needle grid
- Sew a 1/4 seam with 2 pieces of fabric that have been backed with fusible batting.

Note: For this assignment you do not need to do anything more than the twin needle work. The twin needle grid work can be done on the diagonal or on straight of grain. Video instructions show it done on the straight of grain for ease if you are new to this technique. If you would like to do the quilting or the little single pattern satin stitch ball you can.



Fabric Tracking Sheet

Original	My Fabric	Amount	Use
Solid Cream		1 1/2yd x 45in	Blocks, narrow borders, includes extra for testing
Floral		1 1/2yd x 45in	Wide borders appliqué, fussy cut Dresden plate, piped prairie points, fabric weaving
Spotted		1yd x 45in	Block borders, sashing, fabric weaving
Striped		1/2yd x 45in	Binding (cut on cross grain) and piped prairie points
Backing		1 1/2yd x 45in	Backing
Lt Pink Organza (Nylon or poly)		1/2yd x 44in	One layer of 6 pink 3D Embroidered Flowers
Dark Pink Organza (Nylon or Poly)		1/2yd x 44in	One layer of 6 pink 3D Embroidered Flowers
Cream Organza (Nylon or Poly)		1/2yd x 44in	Both layers of 2 cream 3D Embroidered flowers
Cream/White Organza (Nylon or Poly)		1/2yd x 44in	All Embroidered Decoupage
Embellishment Fabrics		Various amounts, can purchase or use from your stash	Refer to pictures of blocks page 6 Cheating Crazy Patch Page 7 Fabric Weaving

VIRTUAL
SEWING GUILD



Jenny
Haskins
DESIGNS
..for elegant embroidery

Part 1



Jenny's Technique Quilt